

# Imagine Emerald

Established  
in 1986



emerald<sup>®</sup>  
cultural institute

Experience Tradition, Embrace Innovation

Your Adventure  
Begins Here.



## Imagine perfecting your English language skills

### Develop essential soft skills while improving your English

Academic quality is at the very centre of the Emerald Experience – it is at the heart of all our language courses and the basis of our approach. We bring energy and enthusiasm in responding to the new reality that is international education today. As learners' needs are constantly changing, we continually develop a sophisticated range of teaching techniques through new courses and stimulating content. Integrated Language learning is a unique opportunity to develop key soft skills while improving competence in English.

Our qualified and experienced Academic Staff are dedicated to providing personalized solutions and advice tailored to the individual needs of each student. We want all our students to have a fruitful learning experience and to achieve their learning goals.



## Imagine a stress-free learning environment on our elegant campus in a prime area of Dublin



### Our year-round Palmerston Park school is located in the beautiful residential neighbourhood of Rathgar, in the south of Dublin.

Set in its own beautifully landscaped gardens, our school overlooks one of Dublin's oldest public parks, Palmerston Park, which dates from 1894. It offers students the chance to study English in a peaceful and stress-free environment with the city centre only a ten-minute tram journey away. The original school building is an elegant Victorian mansion and we have enriched the campus by adding a specially designed modern building with additional classrooms (22 overall) and a large serviced canteen.

## Imagine flexible programmes structured to your needs

At Emerald we offer General English or Exam Preparation Courses (both long and short term), Business English and Teacher Training, Academic Year Programmes (Study and Work Programmes), University Pathways and Internship Programmes. For teenagers and younger learners, we organize engaging summer camps and tailor-made Mini-Stays throughout the year. Our 60-minute lessons are conducted in small classes with a maximum of 14 students in adult classes and an average of 9-10, and a maximum of 15 students in junior classes.

## Imagine discovering the attractions of a vibrant capital city

With its vibrant cultural scene, lively pubs and historic landmarks, Dublin is considered one of the most hospitable and friendliest of cities. Good quality of life, safety and long and short term career opportunities contribute to a promising and successful study abroad experience.



**1986**

established  
in 1986

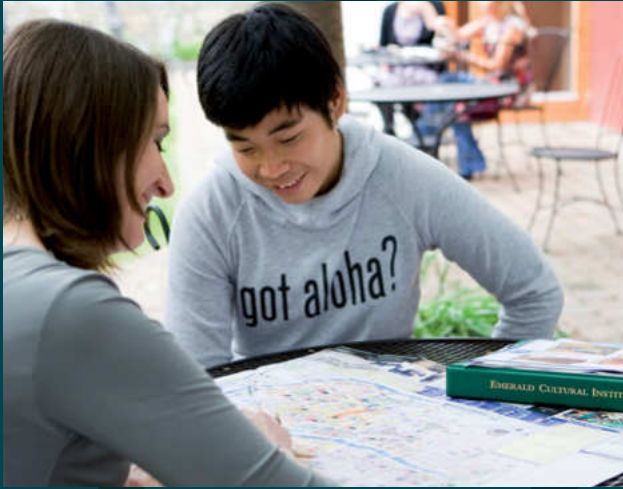
**100,000+**

students welcomed  
since 1986

**70+**

nationalities





**Imagine** enviable results from accredited exam centres

**Emerald is a recognised Cambridge Examination Venue and a preparation centre for Cambridge ESOL and IELTS.**

We are a recognised centre for TOEIC, TIE and the Oxford Test of English. Our teachers are specialised in exam preparation and have a proven success record in preparing students for a wide range of exams.



**Imagine** exploring future opportunities with our mentoring services

**Our Director of Studies, our Academic Staff and Mentors will help design a study path to fully suit your level of English, your academic needs and your learning goals.**

Our mentors, all senior members of the teaching staff, provide academic guidance, advice and support to help students make the most of their studies. The mentor will help the student in the following areas: study planning, monitoring progress, course options, afternoon module choices, examination registration & preparation, study skills, career and further study opportunities.



**Imagine** individual support from our caring staff

**“People are at the heart of what we do”.**

Personal attention is our core principle: our aim is ensuring an optimal student experience within and beyond the classroom. Our comprehensive support system extends across all departments, encompassing academics, accommodation, and student welfare, providing an attentive approach to meet each student’s individual needs.



**Imagine** guaranteed accommodation options close to campus

**Emerald has a full-time Accommodation department dedicated to student placement.**

Throughout the years, we have nurtured long-standing relationships with our dependable host families and partner residences, enabling us to guarantee different accommodation options for all our students looking for a place to stay.





**Imagine** an easy enrolment process and local support from day one

**Our support starts the moment you decide to embark on this adventure with us.**

Our student advisors are located in 6 different countries and our staff can speak 10 languages. We have extensive knowledge of the Irish visa system and our regional advisors and customer care managers are available to help you throughout the process.



**“Emerald provided me with everything that I needed to achieve the goal to get a Master’s in Dublin. They provided me with a good level of English, high level of materials, high level of support. If English is one goal in your life, don’t hesitate to choose Emerald Cultural Institute. Get in touch, find your place and live your dreams”**

**Jakeline**, student from Brazil

**Imagine** integrating with international students in a friendly environment

**Connect with people from all over the world.**

Over the years, Emerald has welcomed students from over 70 different countries. Our mix of nationalities is truly diverse and we pay particular attention to the class composition to enhance the opportunities to practise English and establish enriching relationships.

**Imagine** a varied and rich Social Programme with a daily offer of activities, seminars, cultural events and visits.

Our Student Welfare Staff are happy to help students with everyday issues and to provide information about how to open a bank account, request a letter for immigration, apply for a PPS number or request holidays.

**25**

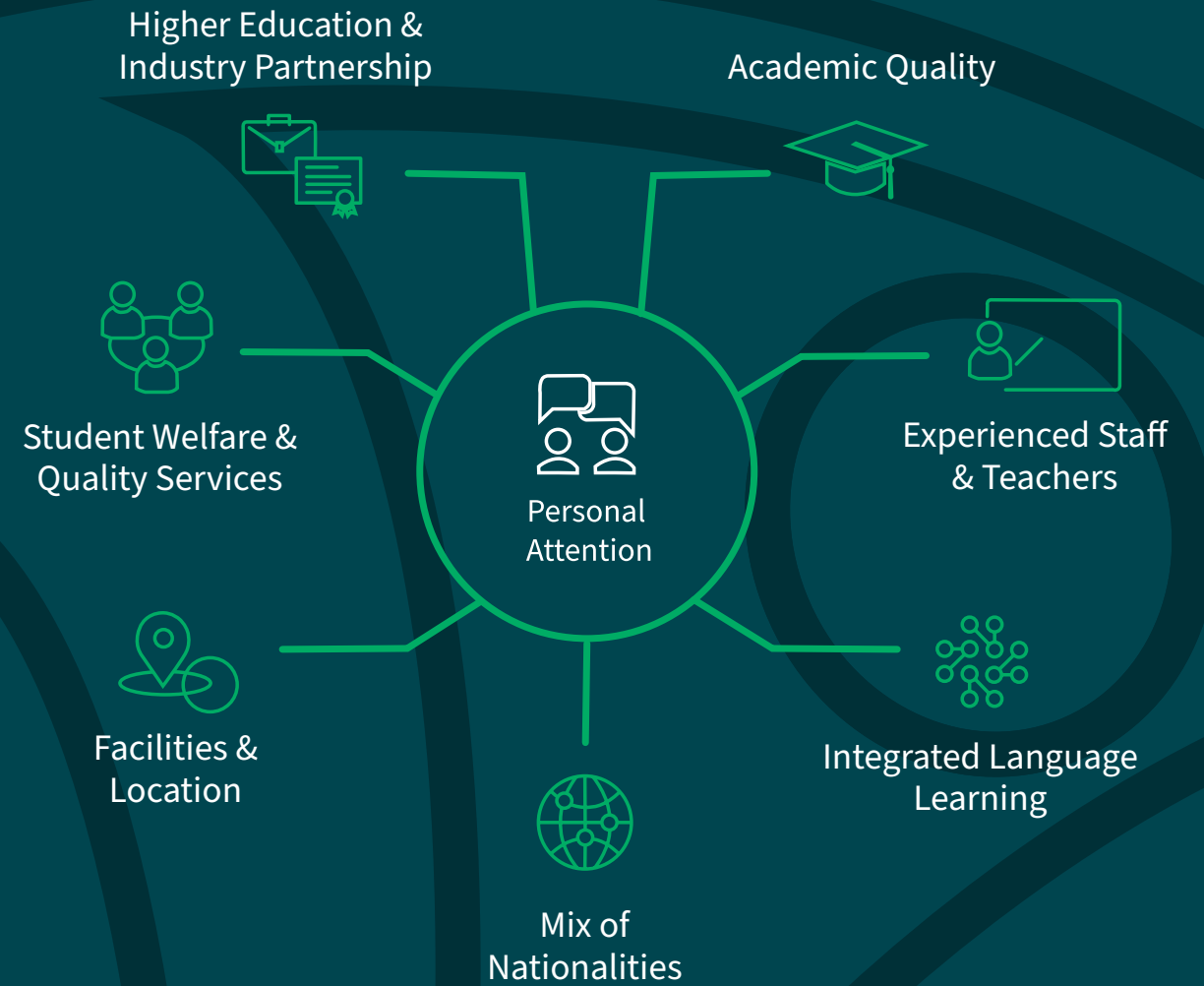
adult courses

**9**

junior programmes

**8**

junior centres in Ireland and the UK



**No need to imagine anymore!**





Emerald provides a great variety of Adult Programmes year-round. Our students come from different backgrounds and age-groups. Whether they need English to work, study or travel, our aim is to help them achieve their academic goals during their time with us.

<b>Integrated Language Learning</b>	<i>page 8</i>
<b>General English Courses</b>	<i>page 10</i>
<b>Intensive Plus Courses</b>	<i>page 11</i>
<b>Examination Courses</b>	<i>page 12</i>
<b>Academic Year Programmes /Study &amp; Work Programme</b>	<i>page 14</i>
<b>Specialised and Business Courses</b>	<i>page 16</i>
<b>Courses for Teachers</b>	<i>page 17</i>
<b>English Plus Internship</b>	<i>page 18</i>
<b>Pre-Sessional Foundation Programme</b>	<i>page 19</i>
<b>Gap Year Programme</b>	<i>page 19</i>
<b>Accommodation</b>	<i>page 20</i>

- Emerald offers a free assessment test service. Students will be tested online in advance of arrival through a written and spoken assessment.
- Every course is subject to a minimum level of English. Please note that we do not offer beginners' courses.
- Some courses are subject to a minimum number, minimum age or fixed start dates.



For further information on the specific course, please consult our website or scan the QR Code



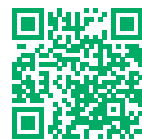
# Integrated Language Learning

Integrated Language Learning is a unique Emerald creation in response to learners' needs and to the new reality that is international education today.

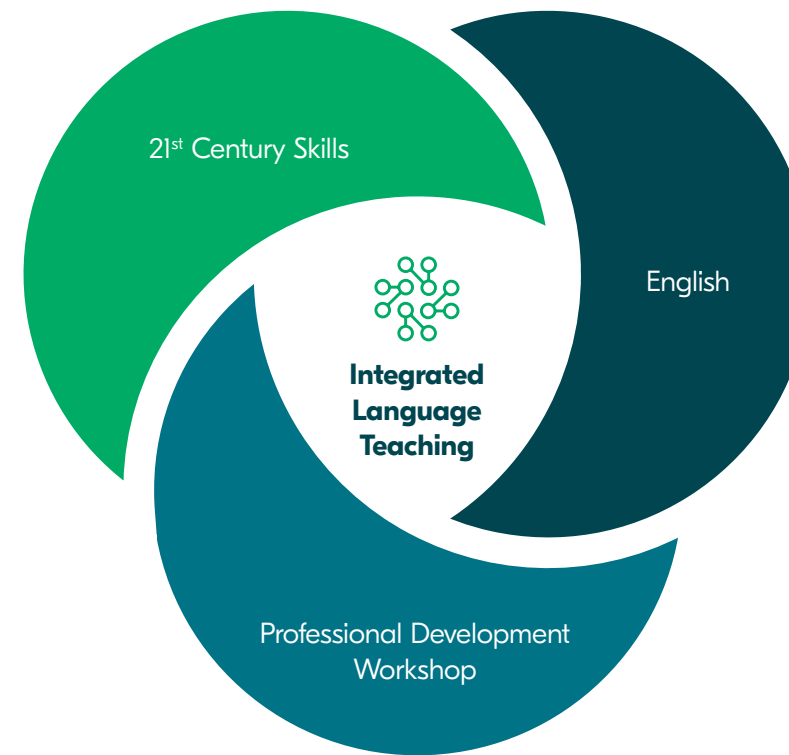
Emerald is proud to introduce an exciting new choice for our students: learn English and master 21st Century Life Skills in the same class. This is Integrated Language Learning.

Based on research compiled by a number of international bodies, including the World Economic Forum, the Council of Europe and covered in the British Universities report on "Solving Future Skills challenges", we have identified the need to provide our English Language students with a unique opportunity to develop key soft skills while improving their competence in English. This will increase their employability in today's workforce. Using material developed in house by Emerald's Academic expert team, our students will now have the opportunity to develop their skills.

Student from B1 to C1 level will benefit from these exciting new modules as part of their Intensive English course at Emerald. Every week, as an integral part of their programme, our students will learn English by studying new Professional- Development topics while continually focusing on their soft skills. Skills development opportunities include: creativity, critical thinking, leadership, collaboration, time management, problem solving and delivering presentations.



Scan the QR Code to learn more about our Integrated Language Learning programme.



**“At the beginning, I thought the critical thinking modules were pointless. But I soon completely changed my mind. Critical thinking is not about being right or being wrong, it’s about how you try to solve the task and the most difficult part is doing this in English. In the end it is worth the effort. I have developed new skills that will improve many aspects of my life. The materials will be useful in job interviews but will also help me with some challenges and adversities in my personal life. This is the characteristic that distinguishes Emerald”**

**Dalila**, student from Brazil

Skills development opportunities include

Creativity

Critical Thinking

Leadership

Collaboration

Time Management

Problem Solving



Professional development workshop topics include

Chairing a meeting

Presentations

Goal-setting

Networking

Intercultural Skills

Sustainability



# General English Courses

Our General Courses focus on improving students' fluency and accuracy in English and are designed to provide a thorough knowledge of general English from elementary to an advanced level.

Intensive Course <i>GEN1</i>	Intensive Course 15 <i>GEN15</i>	Combined Course <i>GEN2</i>	Individual Tuition <i>GEN3</i>
20 hours of group tuition per week	15 hours of group tuition per week	25 hours tuition per week. 20 hours group tuition + 5 hours of individual tuition	Up to 6 hours per day of individual tuition
09.00-11.00 and 11.30-13.30	14.00-15.30 and 15.45-17.15	09:00-11:00 and 11:30-13:30 + 5 hours per week of individual tuition	Flexible timetables
Monday to Friday	Monday to Friday	Monday to Friday	

# Intensive Plus Courses

The Intensive Plus Courses are designed for students who wish to supplement their General English Course with additional specialised classes in small groups.

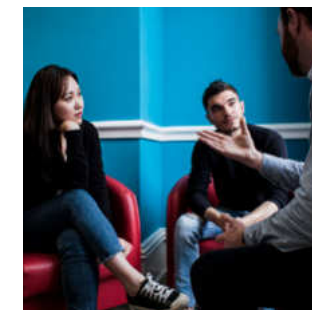
<b>Intensive Plus Speaking Skills</b> <i>GEN4</i>	Designed to improve students' fluency in English. The afternoon classes are specifically focused on developing listening and fluency skills.
<b>Intensive Plus Business</b> <i>GEN7</i>	Aimed at students with either an academic or practical business background who want to develop their business English skills in realistic business settings.
<b>Intensive English for Academic Purposes (EAP)</b> <i>GEN8</i>	Designed for students who already have a high level of English and are preparing to join an undergraduate or postgraduate programme in an English speaking university.



Intensive PLUS:

- **Speaking Skills** *GEN4*
- **Business English** *GEN7*
- **English for Academic Purposes (EAP)** *GEN8*

They are all 26 X 60 minutes of group tuition per week (morning + afternoon).



# Examination Courses

Emerald is a recognised Cambridge Examination Venue and a preparation centre for Cambridge ESOL and IELTS. We are a recognised centre for TOEIC, TIE and the Oxford Test of English. Our teachers are specialised in exam preparation and have a proven success record in preparing students for a wide range of exams.



Emerald offers:

### Cambridge Examination Course (FCE and CAE)

Fixed start dates during the year for a period of 8-12 weeks.

*20 X 60 minutes of group tuition per week in the morning.*

### IELTS Examination Course

IELTS Target Score 5- 5.5, IELTS Target Score 6.0 - 6.5, IELTS Target 7.0+.

*20 X 60 minutes of group tuition per week in the morning.*

### Intensive Plus IELTS

IELTS Target Score 5.0 - 6.0.  
IELTS Target 6.5 - 7.0+.

*26 X 60 minutes of group tuition per week in the morning and afternoon.*

**The Oxford Test of English** is the only language proficiency test certified by the University of Oxford. An affordable and personalized test that is 100% online and consists of 4 modules: Speaking, Listening, Reading and Writing. They can be taken together, on their own, or in any combination.

The test is aligned to the Common European Framework of Reference (CEFR) across 3 levels: A2, B1 or B2. The test is available year-round.



Approved Test Centre





# Academic Year Programmes/ Study & Work Programme

Flexibility is a key part of the Academic Year Programmes, allowing students to choose different course options.

All our Academic Year students are monitored regularly throughout their programme by their academic mentor, their class teachers and the Director of Studies. The Director of Studies always has direct interactions with each student, ensuring the provision of an optimal study and progression experience. This approach underscores our commitment to fostering individual growth and academic excellence.



	Academic Year Programmes 1,2,3 AYP1,2,3	Academic Year Programme 15 AYP15
<b>Tuition</b>	Choice of 20 or 26-hour programmes or a combination of both  <b>Possibility of combining different modules and courses: General English, Exam Preparation courses, Intensive Plus Courses</b>	15 hours group tuition per week in the afternoon  <b>General English Classes</b>
<b>Duration</b>	From 25 to 35 weeks	From 25 to 35 weeks
<b>Levels</b>	AYP1: Elementary (CEFR A1) to Advanced (CEFR C1) AYP2: Pre-Intermediate (CEFR A2) to Advanced (CEFR C1) AYP3: Elementary (CEFR A1) to Advanced (CEFR C1)	Elementary (CEFR A1)* to Advanced (CEFR C1) <i>*Elementary level available on certain dates only</i>
<b>Times</b>	9.00-11.00 and 11.30-13.30 Monday to Friday  AYP1: 20 hours of tuition in the morning AYP2: 26 hours of tuition in the morning and afternoon AYP3: a combination of 20 and 26-hour of tuition	14.00-15.30 and 15.45-17.15 Monday to Friday

*Students attending this programme from countries outside the EEA are entitled to work part-time up to 20 hours per week. Students are entitled to work full-time up to 40 hours per week at specific times of the year: 15th December – 15th January, and June, July, August and September.*

*Academic Year Programmes may be subject to change as a result of updates to the current Immigration Guidelines and Procedures.*

### Unique Emerald Services:

Academic mentoring system

Career Guidance and Seminars

Free supervised afternoon study sessions

Free TIE preparation advice and support

Digital material provided by our experienced teachers







## Specialised and Business Courses

Our Specialised and Business courses have been designed for executive clients with unique learning needs.

The courses are designed for the professional who wishes to concentrate on particular language skills or work on specific areas of English. The programmes focus on maximising progress and achieving desired learning objectives in a short time frame.

### Personal Intensive Course *SPC1*

20, 25 or 30 X 60 minutes of individual tuition per week, tailor-made to suit the exact requirements of the client.

### Intensive Combined Course *SPC3*

General group classes in the morning and afternoon hours of one-to-one tuition are provided. 20 x 60 minutes of group tuition + 10 hours of individual tuition per week.

## Courses for Teachers

These practical courses have been designed for non-native teachers of English at primary and secondary school level or for teachers who would like to use CLIL (Content and Language Integrated Learning):

- **Modern Methodology & Language Development for Primary Teachers** *SPC5*
- **Modern Methodology & Language Development for Secondary Teachers** *SPC6*
- **Introduction to CLIL** *SPC7*

The courses consist of 25 X 60 minutes per week including lessons, seminars and cultural activities.



## Erasmus + Funding

**Qualifying participants can be funded by the Erasmus Plus programme. Erasmus+ is the EU's programme to support education, training, youth and sport.**

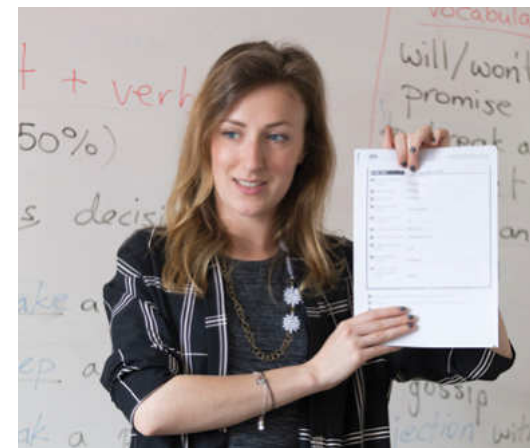
### How to Apply

We recommend that you contact your National Agency to see what your funding options are. You can also use EU resources on E+ funding. As the Receiving Institution, Emerald will supply the necessary documents, such as the Staff Mobility for Training (STT) invitation, study plan and schedule, and Certificate of Participation.

*Our PIC number is:*

*946742214*

*Organisation ID: E10127281*





# English Plus Internship

Our internship programme is the ideal option for our students who want to improve their future career prospects by gaining valuable experience to include on a CV.

This course combines a minimum of four weeks' language study with a guaranteed unpaid internship of minimum eight weeks with real, hands-on work experience.

Our students have the flexibility to choose any course from our comprehensive selection for the duration of 4 weeks or more. For the internship programme we cooperate with partner organisations who are specialised in the area of recruitment. Premium and standard options are available in different fields.

Standard Option	Premium Option
<ul style="list-style-type: none"> <li>Company placement in areas such as marketing, reception, administration, retail, food &amp; beverage, HR and accounts</li> <li>Certificate of completion</li> </ul>	<ul style="list-style-type: none"> <li>Customised internship placement in a variety of fields</li> <li>Dedicated internship advisor</li> <li>Academic credit facilitation</li> <li>Personalised Programme Success Plan</li> <li>Re-entry Handbook and Support</li> <li>Comprehensive support leading up to, during, and following the internship</li> <li>One-on-one coaching calls/meetings - initial interview, orientation call, and pre-departure call</li> </ul>

*The minimum age required for this programme is 18.*

*8 weeks' notice are required to book this programme.*

At Emerald we are aware that many of our students aim to attend an English-taught Undergraduate or Postgraduate Programme, therefore we have developed partnerships with prestigious institutions over the years, including Trinity College Dublin and NCUK partner universities in Ireland and the UK.

# Gap Year Programme

**Combine a semester studying at Emerald Cultural Institute with a semester at one of Ireland's leading universities: Maynooth University.**

University modules are from 34 academic departments over 3 faculties. Receive ECTS Credits for your semester abroad.

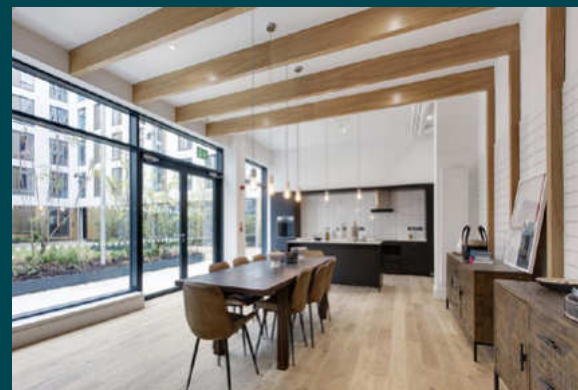
# Pre-Sessional Foundation Programme

For students with a High School Diploma who want to go to an English speaking university or Higher Education Institute but need additional help to develop their English.

This programme is designed to get you to a minimum score of IELTS 5.0 or equivalent and to ensure that you are fully prepared to start your university journey.







# Accommodation

## Homestay

Staying with a host family gives you an excellent opportunity to develop your language skills in a natural everyday context, and is a very popular option with our students. The host family experience is one of the best ways for students to encounter the world-famous Irish hospitality and discover Dublin's lifestyle and culture.

- Our families are **carefully selected** and **monitored by our in-house full-time Accommodation team**.
- Many of our host families have been a part of the Emerald experience for **over 12 years**, due to the dedicated assistance from our accommodation team and their ongoing communication with our homestay families.
- **Our families are situated within walking distance or on direct bus or tram routes to and from the centres. All families are situated close to city-centre bus or tram routes.**

## Residence

**We provide a range of residence options in different locations across Dublin city.**

These offer **mainly single rooms with private bathrooms** in apartments with shared living and kitchen areas. Social spaces and a variety of facilities and services are also available.

**Trinity Hall** is an official residence of Trinity College Dublin, which is available to our students during the **summer period**. It is only a short 10-minute LUAS (tram) ride to the city centre. It is conveniently located a 2-minute walk from our Palmerston Park school.

## Hotel and B&B

We collaborate with Hotels and B&Bs near the school or Dublin city centre.

Staying in a Hotel is ideal as a temporary option, for a short stay or if you plan to come to Dublin to study with your family. Emerald can help you arrange your Hotel or B&B stay. Contact us for more information, prices and availability.



# Imagine Emerald Junior



Emerald provides a great variety of Junior Programmes year-round in magnificent locations in Ireland and the UK. You will be able to discover Ireland from its breathtakingly landscapes to the modernity of Dublin and to explore the UK and visit its famed historic landmarks.

The **Junior Summer Courses** are offered during the summer season, between the end of June and mid-August. These are ideal for individuals or groups willing to spend 2 to 5 weeks improving their English knowledge, developing new skills while exploring the cities, collecting unforgettable memories and meeting new friends from all around the world.

**Multi-Activity Programme** *page 26*

**Intensive Course –  
Conversation & Speaking Skills** *page 27*

**Young Adult Programme** *page 28*

**Trinity Walton STEM Programme** *page 29*

**Discover London Course** *page 30*

**Performing and Production Arts** *page 31*

**The Mini-Stay programmes are offered between the months of September and June** and are designed to cater for groups of teenagers and school groups, who participate in tailor-made programmes of lessons and activities. We offer two types of programme: our Standard Mini-Stay Programmes and our more specialised Mini-Stay Plus Programmes.

**Mini-Stay Programmes** *page 32*



Scan the QR Code to download the complete Emerald Guide to our courses and centres.



**Imagine** being able to join a junior programme in one of our exclusive centres situated in prime locations around Dublin and the UK.



**Imagine** a selection of exciting programmes specifically designed for juniors of different age groups and diverse interests.



# Multi-Activity Programme

This programme is ideal for students who want to learn English and enjoy an interesting and varied social programme, including visits to popular cultural attractions, sports and tournaments, dance, music, drama and arts & crafts.

<b>Tuition</b>	15 hours per week
<b>Age Group</b>	11-17*
<b>Location</b>	<b>Ireland</b> (Homestay & Residential), <b>UK</b> (Residential)



*\*Homestay option only available for students aged 13-17.*

# Intensive Course

The Intensive Course is designed for learners who wish to improve their fluency. It offers students the opportunity to concentrate on their conversation and speaking skills. A full programme of activities is also offered.

<b>Tuition</b>	21 hours per week
<b>Age Group</b>	14-17
<b>Location</b>	<b>Ireland</b> (Homestay & Residential), <b>UK</b> (Residential)



Scan the QR Code to download the complete Emerald Guide to our courses and centres.





# Young Adult Programme

Discover Dublin & Academic and Work Insights

This is an Intensive programme of engaging lessons combined with an interesting activity programme themed “Discovering Dublin”. Specialised workshops are conducted by university professors and guest speakers who are expert in their fields. Lesson content includes Leadership & Development, English for the Workplace and Irish Life & Culture.

<b>Tuition</b>	20 modules per week
<b>Age Group</b>	16-20
<b>Location</b>	<b>Ireland</b> (Homestay & Residential)



# Trinity Walton STEM Programme

In collaboration with the prestigious Trinity Walton Club at Trinity College Dublin, this unique programme allows students to enhance their STEM (Science, Technology, Engineering and Maths) knowledge while improving their English language skills.



<b>Tuition</b>	10 hours of General English + 10 hours of STEM per week
<b>Age Group</b>	14-17
<b>Location</b>	<b>Ireland</b> (Homestay & Residential)



# Discover London Course

Only available at our London Rose Bruford summer centre, it is the perfect way to spend a summer of learning and sightseeing in the capital. This programme includes English classes and visits to top London attractions, museums, art galleries and markets and a weekly full day excursion to exciting locations.

<b>Tuition</b>	15 hours per week
<b>Age Group</b>	14-17, 16-18
<b>Location</b>	UK (Residential)



# Performing and Production Arts

This ground-breaking course will introduce our students to a range of creative and productive activities, essential to the development and delivery of a performance. Delivered through a series of seminars, workshops and studio sessions, the course will cover acting, audio production, design for performance (lighting, set and costume) and scenic arts.

<b>Tuition</b>	15 hours per week
<b>Age Group</b>	14-18
<b>Location</b>	UK (Residential)



London's  
International  
Drama School  
**Rose  
Bruford  
College**  
of Theatre  
& Performance

Scan the QR Code to download the complete Emerald Guide to our courses and centres.





# Mini-Stay Junior Programmes

The Emerald Mini-Stay programmes are offered between the months of September and June and are designed to cater for groups of teenagers and school groups, who participate in tailor-made programmes of lessons and activities.

The Mini-Stay programmes encourage students to develop their language skills in a natural, everyday context. We offer two types of programme: our Standard Mini-Stay Programmes and our more specialised Mini-Stay Plus Programmes.

Standard Mini-Stay Options	Mini-Stay Plus Options
<ul style="list-style-type: none"><li>• English and Examination Preparation</li><li>• English for the Workplace</li><li>• English and Irish Culture</li></ul>	<ul style="list-style-type: none"><li>• English for the Workplace plus Agriculture/ Agritourism</li><li>• English for the Workplace plus Sustainable Environment</li><li>• English Plus Hospitality and Tourism</li></ul>

*Please contact us for more information, tailor-made quotations and availability at [emerald@eci.ie](mailto:emerald@eci.ie)*

---

15-20 hours of tuition per week

---

Classes are in closed groups in the mornings or afternoons

---

Duration: minimum of 6 nights' stay

---

Accommodation in carefully selected host families or possibility of staying in a hotel (contact us for more information)

---

---

## Terms and Conditions

For a full list of our terms and conditions please refer to our Price List and website.

[www.eci.ie](http://www.eci.ie)

---

## Disclaimer

While the Emerald Cultural Institute has tried to ensure that all of the information in this brochure is accurate, the contents are for information purposes only and do not constitute an agreement between the company and any client. Emerald reserves the right to make changes to courses, course content, fees or any other information without prior notice.

---





No need to  
imagine any more...



Scan the QR Code to  
download the complete  
Emerald Guide to our  
courses and centres.

## Contact us

+353 1 4973361  
emerald@eci.ie



Emerald Cultural Institute  
10 Palmerston Park  
Rathgar, Dublin 6  
Ireland

[www.eci.ie](http://www.eci.ie)



Accredited by the  
  
for the teaching  
of English in the UK

