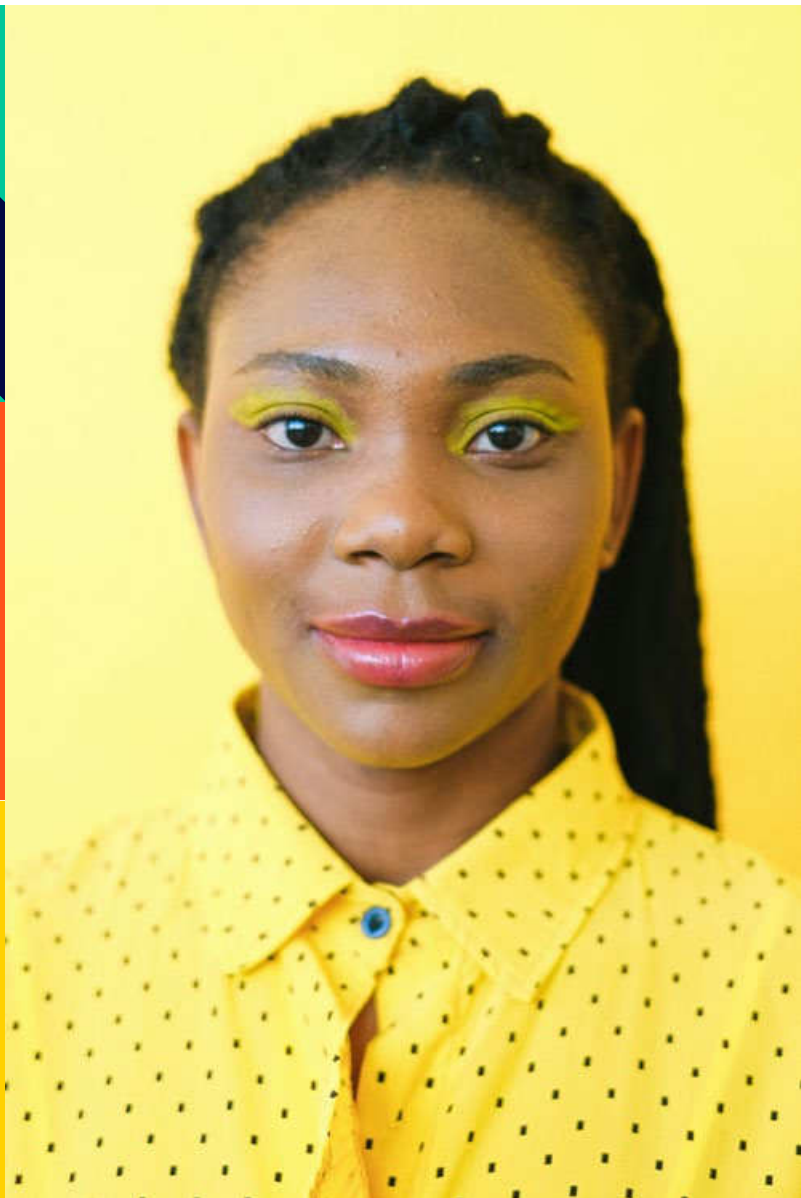


# Price List 2023



UK ✦ Canada ✦ France ✦ South Africa ✦ Cyprus



# Contents

Welcome to the world of Bayswater Education. Our premium brands offer quality international education experiences in 5 amazing countries, the UK, Canada, South Africa, Cyprus and France.

## UK

London

Liverpool

Brighton

Bournemouth

## Canada

Vancouver

Toronto

Calgary

## South Africa

Cape Town

## Cyprus

English in Cyprus (Limassol)

## France

Paris



# Our Promise

We're passionate about growing communities of global thinkers and explorers, at home and abroad – whatever their story. We set up Bayswater because we want people from every walk of life to get a buzz from discovering new cultures, exploring new flavours, and learning what's out there. We think of them as global spirits, like ourselves.



## A home away from home

We're here to support you, at every step of your journey.

## More power to you

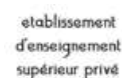
We're a student powered community, listening to you and celebrating your efforts and achievements.

## Your success is ours

It's our job to meet your needs and give you what you need to succeed. Your goals are ours too.

## Inspiring global spirits

Why we do what we do – to empower all young people to create the life they want to live.



# London

## Course Fees

### General English and IELTS Preparation

Prices and lessons are per week

| Course          | Lessons | 1 to 11 | 12 to 23 | 24+  |
|-----------------|---------|---------|----------|------|
| Standard        | 20      | £320    | £285     | £250 |
| Intensive       | 25      | £360    | £320     | £285 |
| Super Intensive | 30      | £400    | £355     | £320 |

IELTS Preparation Available in Standard 20 lessons. Can be combined with General English as part of an Intensive or Super Intensive Course  
Minimum level for IELTS Preparation: B2

| English Plus Add-ons | Lessons | Price | Notes                     |
|----------------------|---------|-------|---------------------------|
| One to One lessons   | 5       | £375  | Custom packages available |

### Cambridge Exam Preparation

Prices are per course

| Course          | Lessons | 10 week | 12 week | Dates       |
|-----------------|---------|---------|---------|-------------|
| Intensive       | 25      | £3,600  | £4,320  | See website |
| Super Intensive | 30      | £4,000  | £4,800  |             |

B2 First (FCE) - min Intermediate Level  
C1 Advanced (CAE) - min Upper-Intermediate Level

### Professional

Upper Intermediate (B2) level required

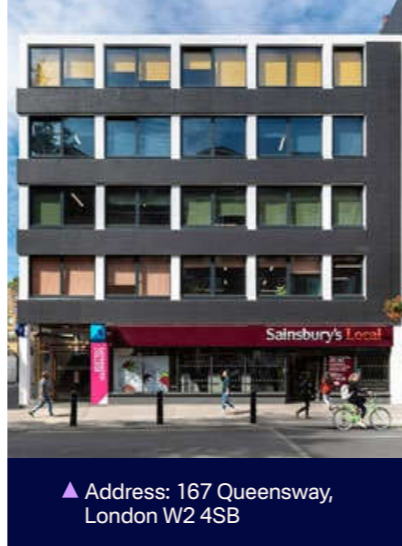
| Digital marketing    | Duration | Price  | Start Dates                                     |
|----------------------|----------|--------|---|
| Professional Diploma | 4 weeks  | £2,299 | 6 Feb, 3 Apr, 1 May, 3 Jul, 7 Aug, 2 Oct, 6 Nov |

| Fashion                             | Duration | Price  | Start Dates                       |
|-------------------------------------|----------|--------|-----------------------------------|
| Luxury Brand Management Certificate | 4 weeks  | £1,575 | 6 Mar, 3 Jul, 7 Aug, 2 Oct        |
| Fashion Communication Certificate   | 4 weeks  | £1,575 | 6 Feb, 5 Jun, 4 Sep, 6 Nov        |
| Fashion Diploma                     | 8 weeks  | £3,150 | 5 Feb, 5 Jun, 7 Aug, 4 Sep, 2 Oct |

### Premium Package

| Professional and English                                      | 8 weeks | 12 weeks | 24 weeks | 36 weeks |
|---|---------|----------|----------|----------|
| Any UK City<br>Any Professional Certificate + English Course* | £2,895  | £3,995   | £6,995   | £9,995   |
| Extra week  | £360    | £330     | £295     | £275     |

\*Courses to be studied one course at a time, not simultaneously



▲ Address: 167 Queensway, London W2 4SB

### Quick Facts

**All Courses Include**  
Online placement test  
Welcome activity  
Organised Social Programme  
Student Handbook  
End of Course Certificate  
WiFi

**Professional courses**  
Minimum age: 18  
Class size: Max 16, Average 10

**English Courses**  
Minimum age: 16  
Minimum stay: 1 week  
Courses start: Every Monday  
Class size: Max 15, Average 10

**English Lessons**  
1 lesson: 45 min  
20 lessons: 15 hrs/week  
25 lessons: 18.75 hrs/week  
30 lessons: 22.5 hrs/week

Course schedule may take place in the morning or afternoon

**Centre Closure Dates**  
The College is open between 2 January - 15 December 2023, including all UK public holidays. School is closed on 28th August for Notting Hill Carnival.

15  
Classrooms

300  
Capacity

15  
Max class size

IELTS  
Test Centre

# London

## Accommodation, Transfers and Other Fees

### Accommodation

Prices are per week

| Homestay Age 16+       | Zone | Time        | Bed & Breakfast | Half Board |
|------------------------|------|-------------|-----------------|------------|
| Single Shared Bathroom | 4-5  | 45 - 60 min | £205            | £235       |
| Twin* Shared Bathroom  | 4-5  | 45 - 60 min | £195            | £225       |
| Single Shared Bathroom | 3    | 30 - 55 min | £220            | £255       |
| Twin* Shared Bathroom  | 3    | 30 - 55 min | £210            | £240       |
| Single Shared Bathroom | 2    | 20 - 55 min | £245            | £270       |
| Twin* Shared Bathroom  | 2    | 20 - 55 min | £230            | £265       |

| Summer Supplement       | Private Bathroom (Only Zone 4/5)  | Dietary supplements |
|-------------------------|-----------------------------------|---------------------|
| 11 Jun - 26 Aug £25 p/w | En-suite or Exclusive use £45 p/w | £25-45 p/w          |

\*Twin rooms are only available for two people travelling together  
Students in a single room may be housed in the same homestay as other students  
Students under 18 in a homestay must book at least Half Board, a return transfer and provide a guardian consent form

| Residences Age 18+                      | Zone | Time      | Per week |
|---|------|-----------|----------|
| Chapter Portobello Studio Room En-suite | 2    | 20 min    | £365     |
| Premium Single Room En-suite            | 2    | 30-45 min | £425     |

### Other charges

| Prices per booking        |      |
|---------------------------|------|
| Registration Fee          | £80  |
| Accommodation Booking Fee | £40  |
| Bank Charges              | £12  |
| Exam Fee - IELTS*         | £200 |
| Exam fee - FCE*           | £170 |
| Exam fee - CAE*           | £175 |

| Prices per week |    |
|-----------------|----|
| Materials Fee   | £6 |
| Insurance*      | £8 |

\* Optional Charges

### Transfers

| Airport     | One Way |
|-------------|---------|
| Heathrow    | £120    |
| London City | £120    |
| Luton       | £155    |
| Gatwick     | £155    |
| Stansted    | £155    |
| St Pancras  | £85     |

£20 supplement for shared transfer per person/journey

All prices are subject to change



▲ Chapter Portobello, 1 Alderson St, London W10 5JY

### Quick Facts

#### Room Types

- Single 🛏
- Twin 🛏🛏
- Studio 🛏🛏

#### Board Types

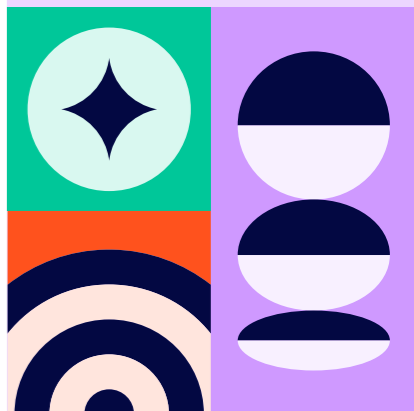
- Bed & breakfast:** Room and breakfast provided
- Half Board:** Room, breakfast and one evening meals provided
- Self-catering:** Room provided without meals

Residences are self-catering

#### Bathroom Types

- En-suite:** Bedroom with adjoining private bathroom
- Shared Bathroom:** Bathroom shared with other residents and/or host family

**Arrival and departure day:**  
Sunday to Saturday





# Liverpool

## Course Fees

### General English and IELTS Preparation

Prices and lessons are per week

| Course          | Lessons | 1 to 11 | 12 to 23 | 24+  |
|-----------------|---------|---------|----------|------|
| Standard        | 20      | £245    | £230     | £215 |
| Intensive       | 25      | £270    | £245     | £230 |
| Super Intensive | 30      | £305    | £290     | £270 |

IELTS Preparation: Available in Intensive or Super Intensive. A combination of 20 or 25 General English lessons + 5 dedicated IELTS lessons  
Minimum level for IELTS Preparation: B2

| English Plus Add-ons | Lessons | Price | Notes                     |
|----------------------|---------|-------|---------------------------|
| One to One lessons   | 5       | £325  | Custom packages available |

### Add a Professional Certificate in London

Upper Intermediate (B2) level required

| Digital marketing    | Duration | Price  | Start Dates                                     |
|----------------------|----------|--------|---|
| Professional Diploma | 4 weeks  | £2,299 | 6 Feb, 3 Apr, 1 May, 3 Jul, 7 Aug, 2 Oct, 6 Nov |

| Fashion                             | Duration | Price  | Start Dates                       |
|-------------------------------------|----------|--------|-----------------------------------|
| Luxury Brand Management Certificate | 4 weeks  | £1,575 | 6 Mar, 3 Jul, 7 Aug, 2 Oct        |
| Fashion Communication Certificate   | 4 weeks  | £1,575 | 6 Feb, 5 Jun, 4 Sep, 6 Nov        |
| Fashion Diploma                     | 8 weeks  | £3,150 | 5 Feb, 5 Jun, 7 Aug, 4 Sep, 2 Oct |

### Premium Package

| Professional and English                                      | 8 weeks | 12 weeks | 24 weeks | 36 weeks |
|---|---------|----------|----------|----------|
| Any UK City<br>Any Professional Certificate + English Course* | £2,895  | £3,995   | £6,995   | £9,995   |
| Extra week  | £360    | £330     | £295     | £275     |

\*Courses to be studied one course at a time, not simultaneously



▲ Address: 42-46 Whitechapel, Liverpool, L1 6DS

### Quick Facts

**All Courses Include**  
Online placement test  
Welcome activity  
Organised Social Programme  
Student Handbook  
End of Course Certificate  
WiFi

**Professional courses**  
Minimum age: 18  
Class size: Max 16, Average 10

**English Courses**  
Minimum age: 16  
Minimum stay: 1 week  
Courses start: Every Monday  
Class size: Max 15, Average 10

**English Lessons**  
1 lesson: 45 min  
20 lessons: 15 hrs/week  
25 lessons: 18.75 hrs/week  
30 lessons: 22.5 hrs/week

Course schedule may take place in the morning or afternoon

**Centre Closure Dates**  
The College is open between 2 January - 15 December 2023, including all UK public holidays

**8**  
Classrooms

**150**  
Capacity

**15**  
Max class size

**IELTS**  
Available

# Liverpool

## Accommodation, Transfers and Other Fees

### Accommodation

Prices are per week

| Homestay Age 16+       | Time      | Bed & Breakfast | Half Board |
|------------------------|-----------|-----------------|------------|
| Single Shared Bathroom | 30-40 min | £180            | £205       |
| Twin Shared Bathroom*  | 30-40 min | £170            | £195       |

|   |  |  |
|---|--|--|
| <b>Summer Supplement</b><br>11 Jun - 26 Aug £25 p/w | <b>Private Bathroom</b><br>En-suite or Exclusive use £40 p/w | <b>Dietary supplements</b><br>£25-45 p/w |
|---|--|--|

\*Twin rooms are only available for two people travelling together  
Students in a single room may be housed in the same homestay as other students  
Students under 18 in a homestay must book at least Half Board, a return transfer and provide a guardian consent form

| Residences Age 18+                  | Time   | Per week |
|-------------------------------------|--------|----------|
| Atlantic Point Single Room En-suite | 15 min | £145     |
| Ablett House Single Room En-suite   | 10 min | £165     |

### Other charges

| Prices per booking        |      |
|---------------------------|------|
| Registration Fee          | £80  |
| Accommodation Booking Fee | £40  |
| Bank Charges              | £12  |
| Exam Fee - IELTS*         | £200 |

| Prices per week |    |
|-----------------|----|
| Materials Fee   | £6 |
| Insurance*      | £8 |

\* Optional Charges

### Transfers

| Airport            | One Way    | Return |
|--------------------|------------|--------|
| Liverpool Airport  | £60        | £105   |
| Manchester Airport | £105       | £190   |
| London Airports    | On request |        |



▲ Atlantic Point, Naylor St, Liverpool L3 6LS

### Quick Facts

**Room Types**  
Single 🛏  
Twin 🛏🛏

### Board Types

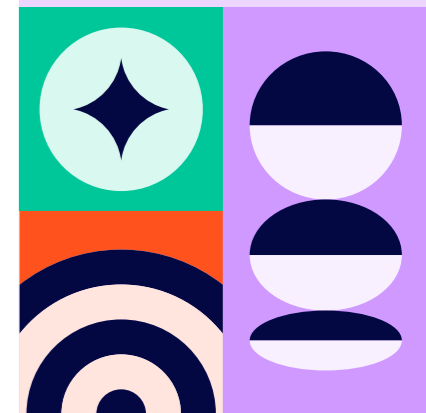
**Bed & breakfast:** Room and breakfast provided  
**Half Board:** Room, breakfast and one evening meals provided  
**Self-catering:** Room provided without meals

**Residences are self-catering**

### Bathroom Types

**En-suite:** Bedroom with adjoining private bathroom  
**Shared Bathroom:** Bathroom shared with other residents and/or host family

**Arrival and departure day:**  
Sunday to Saturday



All prices are subject to change



# Brighton

## Course Fees

### General English and IELTS Preparation

Prices and lessons are per week

| Course          | Lessons | 1 to 11 | 12 to 23 | 24+  |
|-----------------|---------|---------|----------|------|
| Standard        | 20      | £295    | £260     | £225 |
| Intensive       | 25      | £335    | £290     | £265 |
| Super Intensive | 30      | £380    | £340     | £290 |

IELTS Preparation: Available in Intensive or Super Intensive. A combination of 20 or 25 General English lessons + 5 dedicated IELTS lessons  
Minimum level for IELTS Preparation: B2

| English Plus Add-ons | Lessons | Price | Notes                     |
|----------------------|---------|-------|---------------------------|
| One to One lessons   | 5       | £375  | Custom packages available |

| Family Options            | Lessons | 1+   | Extra adult/child | Course Dates     |
|---------------------------|---------|------|-------------------|------------------|
| Young Learner (age 10+)   | 20      | £295 |                   |                  |
| Parent & Child (age 10+)  | 20      | £550 | £275              | 26 June - 11 Aug |
| Family activity programme | 3       | £85  |                   |                  |
| Day Camp (age 12-17)      | 20      | £425 |                   |                  |

### Cambridge Exam Preparation

Prices are per course

| Course          | Lessons | 10 weeks | 12 weeks | Dates       |
|-----------------|---------|----------|----------|-------------|
| Intensive       | 25      | £3,350   | £4,020   | See website |
| Super Intensive | 30      | £3,800   | £4,560   | See website |

B2 First (FCE) - min Intermediate Level  
C1 Advanced (CAE) - min Upper-Intermediate Level

### Add a Professional Certificate in London

Upper Intermediate (B2) level required

| Digital marketing    | Duration | Price  | Start Dates                                     |
|----------------------|----------|--------|---|
| Professional Diploma | 4 weeks  | £2,299 | 6 Feb, 3 Apr, 1 May, 3 Jul, 7 Aug, 2 Oct, 6 Nov |

| Fashion                             | Duration | Price  | Start Dates                       |
|-------------------------------------|----------|--------|-----------------------------------|
| Luxury Brand Management Certificate | 4 weeks  | £1,575 | 6 Mar, 3 Jul, 7 Aug, 2 Oct        |
| Fashion Communication Certificate   | 4 weeks  | £1,575 | 6 Feb, 5 Jun, 4 Sep, 6 Nov        |
| Fashion Diploma                     | 8 weeks  | £3,150 | 5 Feb, 5 Jun, 7 Aug, 4 Sep, 2 Oct |

### Premium Package

| Professional and English                                      | 8 weeks | 12 weeks | 24 weeks | 36 weeks |
|---|---------|----------|----------|----------|
| Any UK City<br>Any Professional Certificate + English Course* | £2,895  | £3,995   | £6,995   | £9,995   |
| Extra week  | £360    | £330     | £295     | £275     |

\*Courses to be studied one course at a time, not simultaneously



▲ 61 Western Rd, Brighton Hove BN3 1JD

### Quick Facts

#### All Courses Include

Online placement test  
Welcome activity  
Organised Social Programme  
Student Handbook  
End of Course Certificate  
WiFi

#### Professional courses

Minimum age: 18  
Class size: Max 16, Average 10

#### English Courses

Minimum age: 16  
Minimum stay: 1 week  
Courses start: Every Monday  
Class size: Max 15, Average 10

#### English Lessons

1 lesson: 45 min  
20 lessons: 15 hrs/week  
25 lessons: 18.75 hrs/week  
30 lessons: 22.5 hrs/week

#### Family Options

Parent & Child, Young Learner (Mon-Fri)  
Tuition only  
Day Camp (Mon-Fri)  
Tuition, lunch and half day activities

Course schedule may take place in the morning or afternoon

#### Centre Closure Dates

The College is open between 2 January - 15 December 2023, including all UK public holidays



# Brighton

## Accommodation, Transfers and Other Fees

### Accommodation

Prices are per week

| Homestay Age 16+                             |            | Half Board |
|--|------------|------------|
| Single Shared Bathroom                       |            | £195       |
| Twin Shared Bathroom*                        |            | £175       |
| Summer Supplement<br>11 Jun - 26 Aug         | £25 p/w    |            |
| Christmas Supplement<br>25th - 31st December | £50 p/w    |            |
| Dietary supplements                          | £25-45 p/w |            |

\*Twin rooms are only available for two people travelling together  
Students in a single room may be housed in the same homestay as other students  
Students under 18 in a homestay must book at least Half Board, a return transfer and provide a guardian consent form

| Residences Age 18+                    | Time     | 1-25 weeks | 26+ weeks |
|---------------------------------------|----------|------------|-----------|
| Britannia Study Hotel Single En-suite | 5-10 min | £335       | £325      |
| <b>Family residence</b>               |          |            |           |
| Upon request                          |          |            |           |

### Other charges

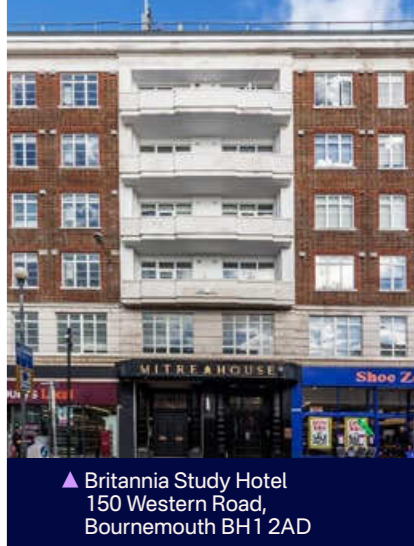
| Prices per booking        |      |
|---------------------------|------|
| Registration Fee          | £80  |
| Accommodation Booking Fee | £40  |
| Bank Charges              | £12  |
| Exam Fee - IELTS*         | £200 |
| Exam fee - FCE*           | £170 |
| Exam fee - CAE*           | £175 |
| <b>Prices per week</b>    |      |
| Materials Fee             | £6   |
| Insurance*                | £8   |

\* Optional Charges

### Transfers

| Airport/Station | One Way |
|-----------------|---------|
| Heathrow        | £190    |
| London City     | £190    |
| Luton           | £220    |
| Gatwick         | £120    |
| Stansted        | £220    |
| St Pancras      | £215    |

All prices are subject to change



▲ Britannia Study Hotel  
150 Western Road,  
Bournemouth BH1 2AD

### Quick Facts

#### Room Types

Single 🛏  
Twin 🛏🛏

#### Board Types

**Half Board:** Room, breakfast and one evening meals provided  
**Self-catering:** Room provided without meals

Residences are self-catering

#### Bathroom Types

**En-suite:** Bedroom with adjoining private bathroom  
**Shared Bathroom:** Bathroom shared with other residents and/or host family

Arrival and departure day:  
Sunday to Saturday





# Bournemouth

## Course Fees

### General English and IELTS Preparation Prices and lessons are per week

| Course          | Lessons | 1 to 11 | 12 to 23 | 24+  |
|-----------------|---------|---------|----------|------|
| Standard        | 20      | £245    | £230     | £215 |
| Intensive       | 25      | £270    | £245     | £230 |
| Super Intensive | 30      | £305    | £290     | £270 |

IELTS Preparation: Available in Intensive or Super Intensive. A combination of 20 or 25 General English lessons + 5 dedicated IELTS lessons  
Minimum level for IELTS Preparation: B2

| English Plus Add-ons | Lessons | Price | Notes                     |
|----------------------|---------|-------|---------------------------|
| One to One lessons   | 5       | £325  | Custom packages available |

| Family Options            | Lessons | 1+   | Extra adult/child | Course Dates     |
|---------------------------|---------|------|-------------------|------------------|
| Young Learner (age 10+)   | 20      | £245 |                   |                  |
| Parent & Child (age 10+)  | 20      | £480 | £240              | 26 June - 11 Aug |
| Family activity programme | 3       | £80  |                   |                  |
| Day Camp (age 12-17)      | 20      | £425 |                   |                  |

### Add a Professional Certificate in London Upper Intermediate (B2) level required

| Digital marketing    | Duration | Price  | Start Dates                                     |
|----------------------|----------|--------|---|
| Professional Diploma | 4 weeks  | £2,299 | 6 Feb, 3 Apr, 1 May, 3 Jul, 7 Aug, 2 Oct, 6 Nov |

| Fashion                             | Duration | Price  | Start Dates                       |
|-------------------------------------|----------|--------|-----------------------------------|
| Luxury Brand Management Certificate | 4 weeks  | £1,575 | 6 Mar, 3 Jul, 7 Aug, 2 Oct        |
| Fashion Communication Certificate   | 4 weeks  | £1,575 | 6 Feb, 5 Jun, 4 Sep, 6 Nov        |
| Fashion Diploma                     | 8 weeks  | £3,150 | 5 Feb, 5 Jun, 7 Aug, 4 Sep, 2 Oct |

### Premium Package

| Professional and English                                      | 8 weeks | 12 weeks | 24 weeks | 36 weeks |
|---|---------|----------|----------|----------|
| Any UK City<br>Any Professional Certificate + English Course* | £2,895  | £3,995   | £6,995   | £9,995   |
| Extra week  | £360    | £330     | £295     | £275     |

\*Courses to be studied one course at a time, not simultaneously



▲ St Peter's Quarter, Bournemouth, BH1 2AD

### Quick Facts

#### All Courses Include

Online placement test  
Welcome activity  
Organised Social Programme  
Student Handbook  
End of Course Certificate  
WiFi

#### Professional courses

Minimum age: 18  
Class size: Max 16, Average 10

#### English Courses

Minimum age: 16  
Minimum stay: 1 week  
Courses start: Every Monday  
Class size: Max 15, Average 10

#### English Lessons

1 lesson: 45 min  
20 lessons: 15 hrs/week  
25 lessons: 18.75 hrs/week  
30 lessons: 22.5 hrs/week

#### Family Options

Parent & Child, Young Learner (Mon-Fri)  
Tuition only

Day Camp (Mon-Fri)  
Tuition, lunch and half day activities

Course schedule may take place in the morning or afternoon

#### Centre Closure Dates

The College is open between 2 January - 15 December 2023, including all UK public holidays



# Bournemouth

## Accommodation, Transfers and Other Fees

### Accommodation Prices are per week

| Homestay Age 16+       | Bed & Breakfast | Half Board |
|------------------------|-----------------|------------|
| Single Shared Bathroom | £185            | £220       |
| Twin Shared Bathroom*  | £175            | £210       |

|  |   |                                   |
|--|---|-----------------------------------|
| Summer Supplement<br>11 Jun - 26 Aug £25 p/w | Private bathroom<br>En-suite or exclusive use £40 p/w | Dietary supplements<br>£25-45 p/w |
|--|---|-----------------------------------|

\*Twin rooms are only available for two people travelling together  
Students in a single room may be housed in the same homestay as other students  
Students under 18 in a homestay must book at least Half Board, a return transfer and provide a guardian consent form

### Residences Age 18+

To be announced

### Family residence

Upon request

### Other charges

| Prices per booking        |      |
|---------------------------|------|
| Registration Fee          | £80  |
| Accommodation Booking Fee | £40  |
| Bank Charges              | £12  |
| Exam Fee - IELTS*         | £195 |

| Prices per week |    |
|-----------------|----|
| Materials Fee   | £6 |
| Insurance*      | £8 |

\* Optional Charges

### Transfers

| Airport     | One Way |
|-------------|---------|
| Bournemouth | £65     |
| Gatwick     | £255    |
| Heathrow    | £250    |
| Luton       | £275    |
| Stansted    | £305    |

All prices are subject to change



▲ Purbeck Residence  
5-7 Oxford Rd,  
Bournemouth BH8 8ES

### Quick Facts

#### Room Types

Single 🛏  
Twin 🛏🛏

#### Board Types

**Bed & breakfast:** Room and breakfast provided  
**Half Board:** Room, breakfast and one evening meals provided  
**Self-catering:** Room provided without meals

Residences are self-catering

#### Bathroom Types

**En-suite:** Bedroom with adjoining private bathroom  
**Shared Bathroom:** Bathroom shared with other residents and/or host family

Arrival and departure day:  
Sunday to Saturday



# Vancouver

## Course Fees

### General English, Business and IELTS Preparation Prices and lessons are per week

| Course                     | Lessons | 1 to 11 | 12 to 23 | 24+   |
|----------------------------|---------|---------|----------|-------|
| Standard                   | 20      | \$350   | \$330    | \$300 |
| Intensive                  | 25      | \$400   | \$385    | \$350 |
| Super Intensive            | 30      | \$445   | \$430    | \$395 |
| Budget (flexible schedule) | 20      | \$295   | \$275    | \$240 |

IELTS Preparation and Business English: Available in Intensive or Super Intensive.  
A combination of 20 or 25 General English lessons + 5 dedicated IELTS/ or Business English lessons.  
Minimum level for IELTS Preparation: B2 or students in level 5

| English Plus Add-ons | Lessons | Price | Notes                     |
|----------------------|---------|-------|---------------------------|
| One to One lessons   | 5       | \$475 | Custom packages available |

| University Preparation     | Lessons | 12 to 23 | 24+   |
|----------------------------|---------|----------|-------|
| University Pathway Program | 30      | \$430    | \$395 |

### Cambridge Exam Preparation Prices are per course

| Course          | Lessons | 10 weeks | 12 weeks | Dates       |
|-----------------|---------|----------|----------|-------------|
| Intensive       | 25      | \$4,500  | \$4,800  | See website |
| Super Intensive | 30      | \$4,450  | \$5,340  | See website |

B2 First (FCE) - min Intermediate Level  
C1 Advanced (CAE) - min Upper- Intermediate Level  
\*A combination of 20 Cambridge exam preparation lessons + 5/10 General English lessons.

### Professional Upper Intermediate (B2) level required

| Professional Certification | Duration | 20 lessons | Start Dates                   |
|----------------------------|----------|------------|-------------------------------|
| Marketing                  | 4 weeks  | \$2,100    | 30 Jan, 24 Apr, 17 Jul, 9 Oct |
| Business Management        | 4 weeks  | \$2,100    | 2 Jan, 27 Mar, 19 Jun, 11 Sep |
| Project Management         | 4 weeks  | \$2,100    | 27 Feb, 22 May, 14 Aug, 6 Nov |

### Premium Package

| Professional and English  | 8 weeks | 12 weeks | 24 weeks | 36 weeks | 48 weeks |
|---|---------|----------|----------|----------|----------|
| Any Canadian City<br>Any Professional Certificate + English Course* | \$3,520 | \$5,200  | \$9,960  | \$13,680 | \$17,760 |
| Extra week  | \$440   | \$430    | \$415    | \$380    | \$370    |

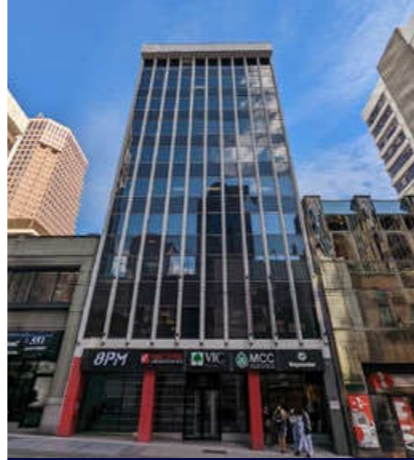
\*Courses to be studied one course at a time, not simultaneously



E-mail us  
partners@bayswater.ac  
Call us  
+1-604-684-9577  
Visit us  
549 Howe Street, 6th Floor, Vancouver BC Canada V6C 2C2

bayswater.ac/vancouver

Agent Enquiries  
Our Agents are appointed experts in your country and can give you specialist advice on our courses, as well as any visa requirements. Contact us for an Agent in your area.  
For agent sales enquiries please contact us at  
partners@bayswater.ac



▲ 549 Howe Street, 6th Floor  
Vancouver BC Canada V6C 2C2

### Quick Facts

**All Courses Include**  
Online placement test  
Welcome activity  
Organised Social Programme  
Student Handbook  
End of Course Certificate  
WiFi

**Professional courses**  
Minimum age: 18  
Class size: Max 16, Average 10

**English Courses**  
Minimum age: 16  
Minimum stay: 1 week  
Courses start: Every Monday  
Class size: Max 15, Average 10

**English Lessons**  
1 lesson: 45 min  
20 lessons: 15 hrs/week  
25 lessons: 18.75 hrs/week  
30 lessons: 22.5 hrs/week

Course Schedule is subject to change and availability

**Centre Closure Dates**  
2 Jan 7 Aug  
20 Feb 4 Sep  
7 Apr 9 Oct  
22 May 10 Nov  
3 Jul 24 Dec - 1 Jan 2024

# Vancouver

## Accommodation, Transfers and Other Fees

### Accommodation Prices are per week

| Homestay Age 16+            | Full Board | Half Board |
|-----------------------------|------------|------------|
| Single Room Shared Bathroom | \$285      | \$260      |
| Twin* Room Shared Bathroom  | \$275      | \$245      |

|  |   |  |
|--|---|--|
| <b>Summer Supplement</b><br>11 Jun - 26 Aug \$35 p/w | <b>Minors Fee</b><br>Students Under 18 years old \$50 p/w | <b>Dietary supplements</b><br>May incur charge |
|--|---|--|

\*Twin rooms are only available for two people travelling together  
Students in a single room may be housed in the same homestay as other students  
Students under 18 in a homestay must book, a return transfer and provide a custodianship consent form  
Homestay Extra Night Fee: \$45  
Minor Homestay Extra Night Fee: \$50

| GEC Student Residences              | Time      | 5-8 weeks | 9-12 weeks | 13-16 weeks | +16 weeks<br>Monthly Rate |
|-------------------------------------|-----------|-----------|------------|-------------|---------------------------|
| Shared bedroom, shared bathroom     | 20-40 min | \$350     | \$343      | \$336       | \$1,200                   |
| Premium or sectional shared bedroom | 20-40 min | \$371     | \$364      | \$357       | \$1,300                   |
| Private bedroom, shared bathroom    | 20-40 min | \$441     | \$434      | \$427       | \$1,600                   |

|   |  |
|---|--|
| <b>Security Deposit</b><br>Half month rent for monthly, 2-weeks for weekly rate | <b>Amenities Fee</b><br>Non-refundable \$214 |
|---|--|

Minimum stay is 5 weeks. Only available to students 19 years old and older.  
Includes bedding, kitchen supplies, utilities, WiFi, in-suite laundry, lounge and gym.  
Semester monthly rates apply to bookings longer than 16 weeks.

### Other charges

| Prices per booking             |       |
|--------------------------------|-------|
| Registration Fee               | \$175 |
| Accommodation Booking Fee      | \$275 |
| Bank Charges                   | \$35  |
| Exam Fee - Cambridge & IELTS*  | \$350 |
| University Placement Service** | \$85  |
| Custodianship Document         | \$150 |

| Prices per week |      |
|-----------------|------|
| Materials Fee   | \$10 |
| Insurance***    | \$25 |

\* Optional Charges  
\*\* First university application is free, additional applications are charged per application.  
\*\*\* Students must purchase Bayswater Insurance if living in Bayswater Student residences in Canada.

All prices are subject to change



bayswater.ac/vancouver

E-mail us  
partners@bayswater.ac  
Call us  
+1-604-684-9577  
Visit us  
549 Howe Street, 6th Floor, Vancouver BC Canada V6C 2C2



▲ GEC - Student Residences - Vancouver and Burnaby, BC

### Quick Facts

**Room Types**  
Single 🛏  
Twin 🛏🛏

**Board Types**  
**Full Board:** 3 meals per day (breakfast, lunch and dinner). 21 meals per week  
**Half Board:** 2 meals per day (breakfast and dinner). 14 meals per week  
**Self-catering:** Room provided without meals

Residences are self-catering

**Bathroom Types**  
**Shared Bathroom:** Bathroom shared with other residents and/ or host family

**Arrival and departure day:** Sunday to Saturday



Agent Enquiries  
Our Agents are appointed experts in your country and can give you specialist advice on our courses, as well as any visa requirements. Contact us for an Agent in your area.  
For agent sales enquiries please contact us at  
partners@bayswater.ac



# Toronto

## Course Fees

### General English, Business and IELTS Preparation Prices and lessons are per week

| Course                     | Lessons | 1 to 11 | 12 to 23 | 24+   |
|----------------------------|---------|---------|----------|-------|
| Standard                   | 20      | \$350   | \$330    | \$300 |
| Intensive                  | 25      | \$400   | \$385    | \$350 |
| Super Intensive            | 30      | \$445   | \$430    | \$395 |
| Budget (flexible schedule) | 20      | \$295   | \$275    | \$240 |

IELTS Preparation & Business English: Available in Standard 20 lessons.  
Can be combined with General English as part of an Intensive or Super Intensive Course  
Minimum level for IELTS Preparation: B2

| English Plus Add-ons | Lessons | Price | Notes                     |
|----------------------|---------|-------|---------------------------|
| One to One lessons   | 5       | \$475 | Custom packages available |

| University Preparation     | Lessons | 12 to 23 | 24+   |
|----------------------------|---------|----------|-------|
| University Pathway Program | 30      | \$430    | \$395 |

### Cambridge Exam Preparation Prices are per course

| Course          | Lessons | 10 weeks | 12 weeks | Dates       |
|-----------------|---------|----------|----------|-------------|
| Intensive       | 25      | \$4,000  | \$4,800  | See website |
| Super Intensive | 30      | \$4,450  | \$5,340  | See website |

B2 First (FCE) - min Intermediate Level  
C1 Advanced (CAE) - min Upper- Interemmediate Level  
\*A combination of 20 Cambridge exam preparation lessons + 5/10 General English lessons.

### Professional Upper Intermediate (B2) level required

| Professional Certification | Duration | 20 lessons | Start Dates                   |
|----------------------------|----------|------------|-------------------------------|
| Marketing                  | 4 weeks  | \$2,100    | 30 Jan, 24 Apr, 17 Jul, 9 Oct |
| Business Management        | 4 weeks  | \$2,100    | 2 Jan, 27 Mar, 19 Jun, 11 Sep |
| Project Management         | 4 weeks  | \$2,100    | 27 Feb, 22 May, 14 Aug, 6 Nov |

### Premium Package

| Professional and English  | 8 weeks | 12 weeks | 24 weeks | 36 weeks | 48 weeks |
|---|---------|----------|----------|----------|----------|
| Any Canadian City<br>Any Professional Certificate + English Course* | \$3,520 | \$5,200  | \$9,960  | \$13,680 | \$17,760 |
| Extra week  | \$440   | \$430    | \$415    | \$380    | \$370    |

\*Courses to be studied one course at a time, not simultaneously



E-mail us  
partners@bayswater.ac  
Call us  
+1-416-223-7855  
Visit us  
5 Park Home Ave 6th floor, Toronto ON M2N 6L4



▲ 5 Park Home Ave 6th floor,  
North York,  
Toronto ON M2N 6L4

### Quick Facts

**All Courses Include**  
Online placement test  
Welcome activity  
Organised Social Programme  
Student Handbook  
End of Course Certificate  
WiFi

**Professional courses**  
Minimum age: 18  
Class size: Max 16, Average 10

**English Courses**  
Minimum age: 16  
Minimum stay: 1 week  
Courses start: Every Monday  
Class size: Max 15, Average 11

**English Lessons**  
1 lesson: 45 min  
20 lessons: 15 hrs/week  
25 lessons: 18.75 hrs/week  
30 lessons: 22.5 hrs/week

Course Schedule is subject to  
change and availability

**Centre Closure Dates**  
2 Jan 7 Aug  
20 Feb 4 Sep  
7 Apr 9 Oct  
22 May 13 Nov  
3 Jul 24 Dec - 1 Jan  
2024



# Toronto

## Accommodation, Transfers and Other Fees

### Accommodation Prices are per week

| Homestay Age 16+            | Full board | Half Board |
|-----------------------------|------------|------------|
| Single Room Shared Bathroom | \$285      | \$260      |
| Twin* Room Shared Bathroom  | \$275      | \$245      |

|  |   |  |
|--|---|--|
| <b>Summer Supplement</b><br>11 Jun - 26 Aug \$35 p/w | <b>Minors Fee</b><br>Students Under 18 years old \$50 p/w | <b>Dietary supplements</b><br>May incur charge |
|--|---|--|

\*Twin rooms are only available for two people travelling together  
Students in a single room may be housed in the same homestay as other students  
Students under 18 in a homestay must book, a return transfer and provide a custodianship consent form  
Homestay Extra Night Fee: \$45  
Minor Homestay Extra Night Fee: \$50

| Harrington Premium Student Residence Age 18+ | Time     | Per week |
|--|----------|----------|
| Single Deluxe room, shared bathroom          | 30 min 🚗 | \$370    |
| Single Master room, En-suite bathroom        | 30 min 🚗 | \$470    |

|   |  |
|---|--|
| <b>Refundable Security Deposit</b><br>\$350 | <b>Bedding pack*</b><br>Non-refundable \$150 |
|---|--|

\*bedding pack does not include towels

| Casa Toronto Residences Age 18+                | Time     | Per week |
|--|----------|----------|
| Residence shared room / shared bathroom        | 25 min 🚗 | \$325    |
| Residence private room / shared bathroom       | 25 min 🚗 | \$400    |
| Residence private room / semi-private bathroom | 25 min 🚗 | \$430    |

| Dream House Age 18+                              | Time     | Per week |
|--|----------|----------|
| Dream House private room / shared bathroom       | 35 min 🚗 | \$400    |
| Dream House private room / semi-private bathroom | 35 min 🚗 | \$430    |
| Dream House private room / private bathroom      | 35 min 🚗 | \$480    |

| Dream Apartments Age 18+                          | Time     | Per week |
|---|----------|----------|
| Dream Apartments private room / shared bathroom   | 35 min 🚗 | \$400    |
| Dream Apartments private room / semi-private bath | 35 min 🚗 | \$430    |

### Other charges

| Prices per booking             |       |
|--------------------------------|-------|
| Registration Fee               | \$175 |
| Accommodation Booking Fee      | \$225 |
| Bank Charges                   | \$35  |
| Exam Fee - Cambridge & IELTS*  | \$350 |
| University Placement Service** | \$85  |
| Custodianship Document         | \$150 |

| Prices per week |      |
|-----------------|------|
| Materials Fee   | \$10 |
| Insurance***    | \$25 |

\* Optional Charges  
\*\* First university application is free, additional applications are charged per application.  
\*\*\* Students must purchase Bayswater Insurance if living in Bayswater Student residences in Canada.

All prices are subject to change



E-mail us  
partners@bayswater.ac  
Call us  
+1-416-223-7855  
Visit us  
5 Park Home Ave 6th floor, ON M2N 6L4



▲ Harrington Residence  
561 Sherbourne St Unit 2703

### Quick Facts

#### Room Types

Single 🚗  
Twin 🚗🚗

#### Board Types

**Full Board:** 3 meals per day (breakfast, lunch and dinner). 21 meals per week

**Half Board:** 2 meals per day (breakfast and dinner). 14 meals per week

**Self-catering:** Room provided without meals

Residences are self-catering

#### Bathroom Types

**En-suite:** Bedroom with adjoining private bathroom

**Shared Bathroom:** Bathroom shared with other residents and/or host family

Arrival and departure day:  
Sunday to Saturday



Agent Enquiries  
Our Agents are appointed experts in your country and can give you specialist advice on our courses, as well as any visa requirements. Contact us for an Agent in your area.  
For agent sales enquiries please contact us at  
partners@bayswater.ac

Agent Enquiries  
Our Agents are appointed experts in your country and can give you specialist advice on our courses, as well as any visa requirements. Contact us for an Agent in your area.  
For agent sales enquiries please contact us at  
partners@bayswater.ac



# Calgary

## Course Fees

### General English, Business and IELTS Preparation Prices and lessons are per week

| Course          | Lessons | 1 to 11 | 12 to 23 | 24+   |
|-----------------|---------|---------|----------|-------|
| Standard        | 20      | \$350   | \$330    | \$300 |
| Intensive       | 25      | \$400   | \$385    | \$350 |
| Super Intensive | 30      | \$445   | \$430    | \$395 |

IELTS Preparation & Business English: Available in Standard 20 lessons.  
Can be combined with General English as part of an Intensive or Super Intensive Course  
Minimum level for IELTS Preparation: B2

| English Plus Add-ons | Lessons | Price | Notes                     |
|----------------------|---------|-------|---------------------------|
| One to One lessons   | 5       | \$475 | Custom packages available |

| University Preparation     | Lessons | 12 to 23 | 24+   |
|----------------------------|---------|----------|-------|
| University Pathway Program | 30      | \$430    | \$395 |

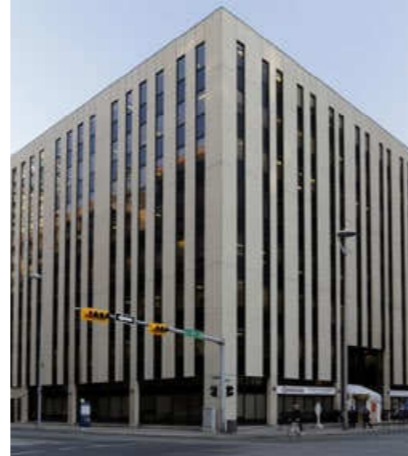
### Professional Upper Intermediate (B2) level required

| Professional Course | Duration | 20 lessons | Start Dates                   |
|---------------------|----------|------------|-------------------------------|
| Marketing           | 4 weeks  | \$2,100    | 30 Jan, 24 Apr, 17 Jul, 9 Oct |
| Business Management | 4 weeks  | \$2,100    | 2 Jan, 27 Mar, 19 Jun, 11 Sep |
| Project Management  | 4 weeks  | \$2,100    | 27 Feb, 22 May, 14 Aug, 6 Nov |

### Premium Package

| Professional and General English                                    | 8 weeks | 12 weeks | 24 weeks | 36 weeks | 48 weeks |
|---|---------|----------|----------|----------|----------|
| Any Canadian City<br>Any Professional Certificate + English Course* | \$3,520 | \$5,200  | \$9,960  | \$13,680 | \$17,760 |
| Extra week  | \$440   | \$430    | \$415    | \$380    | \$370    |

\*Courses to be studied one course at a time, not simultaneously



▲ 840 6 Ave SW,  
Calgary, AB T2P 3E5

### Quick Facts

**All Courses Include**  
Online placement test  
Welcome activity  
Organised Social Programme  
Student Handbook  
End of Course Certificate  
WiFi

**Professional courses**  
Minimum age: 18  
Class size: Max 16, Average 10

**English Courses**  
Minimum age: 16  
Minimum stay: 1 week  
Courses start: Every Monday  
Class size: Max 15, Average 10

**English Lessons**  
1 lesson: 45 min  
20 lessons: 15 hrs/week  
25 lessons: 18.75 hrs/week  
30 lessons: 22.5 hrs/week

Course Schedule is subject to change and availability

**Centre Closure Dates**  
2 Jan 7 Aug  
20 Feb 4 Sep  
7 Apr 9 Oct  
22 May 13 Nov  
3 Jul 24 Dec - 1 Jan 2024



# Calgary

## Accommodation, Transfers and Other Fees

### Accommodation Prices are per week

| Homestay Age 16+            | Full-board | Half Board |
|-----------------------------|------------|------------|
| Single Room Shared Bathroom | \$270      | \$255      |

|  |   |  |
|--|---|--|
| <b>Summer Supplement</b><br>11 Jun - 26 Aug \$35 p/w | <b>Minors Fee</b><br>Students Under 18 years old \$50 p/w | <b>Dietary supplements</b><br>May incur charge |
|--|---|--|

Students in a single room may be housed in the same homestay as other students  
Students under 18 in a homestay must book, a return transfer and provide a custodianship consent form  
Homestay Extra Night Fee: \$45  
Minor Homestay Extra Night Fee: \$50

| The HUB Student Residence Age 18+   | Time     | 2-4 weeks | 5-11 weeks | 12-23 weeks | 24+ weeks |
|-------------------------------------|----------|-----------|------------|-------------|-----------|
| Single Deluxe room, shared bathroom | 20 min 🚗 | \$350     | \$300      | \$275       | \$250     |

|   |  |
|---|--|
| <b>Refundable Security Deposit</b><br>\$200 | <b>Laundry Card</b><br>\$1.75 per load |
|---|--|

Private room in a shared apartment.  
Free bedding, towels, kitchen supplies, utilities, Wifi, lounge, and gym.

### Other charges

| Prices per booking             |       |
|--------------------------------|-------|
| Registration Fee               | \$175 |
| Accommodation Booking Fee      | \$200 |
| Bank Charges                   | \$35  |
| Exam Fee - IELTS*              | \$350 |
| University Placement Service** | \$85  |
| Custodianship Document         | \$150 |

| Prices per week |      |
|-----------------|------|
| Materials Fee   | \$10 |
| Insurance***    | \$25 |

\* Optional Charges

\*\* First university application is free, additional applications are charged per application.

\*\*\* Students must purchase Bayswater Insurance if living in Bayswater Student residences in Canada.

All prices are subject to change



▲ The HUB Student Residence  
2416 16 Ave NW,  
Calgary AB T2M 5C7

### Quick Facts

**Room Types**  
Single 🚪

### Board Types

**Full Board:** 3 meals per day (breakfast, lunch and dinner). 21 meals per week

**Half Board:** 2 meals per day (breakfast and dinner). 14 meals per week

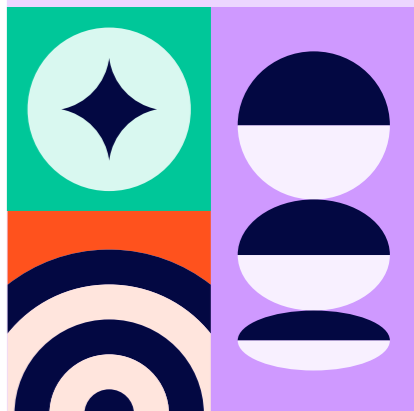
**Self-catering:** Room provided without meals

**Residences are self-catering**

### Bathroom Types

**Shared Bathroom:** Bathroom shared with other residents and/or host family

**Arrival and departure day:** Sunday to Saturday



# Cape Town

## Course Fees

### General English and IELTS Preparation Prices and lessons are per week

| Course          | Lessons | 1 to 11 | 12 to 23 | 24+  |
|-----------------|---------|---------|----------|------|
| Standard        | 20      | €250    | €220     | €200 |
| Intensive       | 25      | €300    | €260     | €230 |
| Super Intensive | 30      | €340    | €300     | €260 |

IELTS Preparation: Available in Intensive or Super Intensive.  
A combination of 20 or 25 General English lessons + 5 dedicated IELTS lessons  
Minimum level for IELTS Preparation: B2

| English Plus Add-ons | Lessons | Price | Notes                     |
|----------------------|---------|-------|---------------------------|
| One to One lessons   | 5       | €325  | Custom packages available |

| Family Options            | Lessons | 1+   | Extra adult/child |
|---------------------------|---------|------|-------------------|
| Young Learner (age 10+)   | 20      | €250 |                   |
| Parent & Child (age 10+)  | 20      | €460 | €230              |
| Family activity programme | 3       | €95  |                   |

### Cambridge Exam Preparation Prices are per course

| Course          | Lessons | 10 weeks | 12 weeks | Dates       |
|-----------------|---------|----------|----------|-------------|
| Intensive       | 25      | €3,000   | €3,600   | See website |
| Super Intensive | 30      | €3,400   | €4,080   | See website |

B2 First (FCE) - min Intermediate Level  
C1 Advanced (CAE) - min Upper- Intermediate Level



▲ Leadership House Building  
40 Shortmarket Street

### Quick Facts

#### All Courses Include

Online placement test  
Welcome activity  
Organised Social Programme  
Student Handbook  
End of Course Certificate  
WiFi

#### English Courses

Minimum age: 16  
Minimum stay: 1 week  
Courses start: Every Monday  
Class size: Max 15, Average 10

#### English Lessons

1 lesson: 45 min  
20 lessons: 15 hrs/week  
25 lessons: 18.75 hrs/week  
30 lessons: 22.5 hrs/week

#### Family Options

Parent & Child, Young Learner (Mon-Fri)  
Tuition only

Course Schedule is subject to change and availability

#### Centre Closure Dates

2 Jan 16 Jun  
21 Mar 9 Aug  
7, 10, 27 Apr 25 Sep  
1 May 22 Dec - 1 Jan 2024



# Cape Town

## Accommodation, Transfers and Other Fees

### Accommodation Prices are per week

| Homestay Age 16+             | Half Board |
|------------------------------|------------|
| Single Room Shared Bathroom  | €175       |
| Single Room Private Bathroom | €230       |

Non-refundable lease fee  
€70 (one-off)

Dietary supplements  
€30-55 p/w

Students in a single room may be housed in the same homestay as other students  
Students under 18 in a homestay must book at least Half Board, a return transfer and provide a guardian consent form

| Residences Age 18+                                     | Time    | Self Cater |
|--|---------|------------|
| Neighbourgood, Ensuite single room in shared apartment | 5 min ✨ | €180       |

### Other charges

| Prices per booking        |      |
|---------------------------|------|
| Registration Fee          | €70  |
| Accommodation Booking Fee | €40  |
| Bank Charges              | €12  |
| Exam Fee - Cambridge*     | €350 |

| Prices per week |    |
|-----------------|----|
| Materials Fee   | €6 |

\* Optional Charges

### Transfers

| Airport                 | One Way |
|-------------------------|---------|
| Cape Town International | €55     |



▲ Neighbourgood, 60  
Corporation Street, Cape Town

### Quick Facts

#### Room Types

Single 🛏  
Twin 🛏🛏  
Single apartment  
Shared apartment

#### Board Types

**Half Board:** Room, breakfast and one evening meals provided  
**Self-catering:** Room provided without meals

Residences are self-catering

#### Bathroom Types

**En-suite:** Bedroom with adjoining private bathroom  
**Shared Bathroom:** Bathroom shared with other residents and/or host family

Arrival and departure day:  
Sunday to Saturday



All prices are subject to change





# Paris

## Course Fees

### General French Prices and lessons are per week

| Course    | Lessons | 1 to 11 | 12 to 23 | 24+  |
|-----------|---------|---------|----------|------|
| Standard  | 20      | €320    | €280     | €240 |
| Intensive | 25      | €360    | €320     | €280 |

### French Plus Add-ons

| French Plus Add-ons | Lessons | Price | Notes                     |
|---------------------|---------|-------|---------------------------|
| One to One lessons  | 5       | €325  | Custom packages available |

### Family Options

| Family Options            | Lessons | 1+   | Extra adult/child | Course dates         |
|---------------------------|---------|------|-------------------|----------------------|
| Young Learner*            | 20      | €320 |                   | 3 Jul, 17 Jul, 7 Aug |
| Parent & Child*           | 20      | €580 | €290              |                      |
| Family activity programme | 3       | €95  |                   |                      |

\* Age 10+  
Young Learners must be accommodated with a parent/guardian

### Professional Taught in English - B2 level required

| Fashion                             | Duration | Price  | Start Dates  |
|-------------------------------------|----------|--------|--------------|
| Luxury Brand Management Certificate | 4 weeks  | €1,750 | 7 Aug, 4 Sep |
| Fashion Communication Certificate   | 4 weeks  | €1,750 | 2 Oct        |

### DELF/DALF Exam Preparation Prices are per course

| Course    | Lessons | 1 to 11 | Dates       |
|-----------|---------|---------|-------------|
| Intensive | 25      | €360    | See website |



▲ 13 Passage Dauphine, 75006 Paris

### Quick Facts

#### All Courses Include

Online placement test  
Welcome activity  
Organised Social Programme  
Student Handbook  
End of Course Certificate  
WiFi

#### Professional Courses

Minimum age: 16  
Class Size: Max 16, Average 10

#### French Courses

Minimum age: 16  
Minimum stay: 1 week  
Courses start: Every Monday  
Class size: Max 15, Average 10

#### French Lessons

1 lesson: 45 min  
20 lessons: 15 hrs/week  
25 lessons: 18.75 hrs/week

#### Family Options

Parent & Child, Young Learner (Mon-Fri) Tuition only

Course schedule is subject to availability

#### Centre Closure Dates

1 Jan 15 Aug  
10 Apr 1, 11 Nov  
1, 8, 18, 29 May 23 Dec  
14 Jul to 1 Jan 2024

#### Beginner Course Dates

2 Jan 3 Jul  
13 Feb 7 Aug  
20 Mar 4 Sep  
24 Apr 9 Oct  
5 Jun 13 Nov



# Paris

## Accommodation, Transfers and Other Fees

### Accommodation Prices are per week

| Homestay Age 16+       | Bed & Breakfast | Half Board |
|------------------------|-----------------|------------|
| Single shared bathroom | €295            | €390       |

|   |  |   |
|---|--|---|
| <b>Dietary supplements</b><br>Bed & Breakfast - €55<br>Half board - €75 | <b>Private bathroom</b><br>En-suite or exclusive use €75 | <b>Extra night</b><br>Bed & Breakfast - €50<br>Half board - €65 |
|---|--|---|

Students in a single room may be housed in the same homestay as other students  
Students under 18 in a homestay must book at least Half Board, a return transfer and provide a guardian consent form

| Residences Age 18+  | Time     | 1-4 weeks | 5+   |
|---|----------|-----------|------|
| Résidence Davout Studio, en-suite                           | 30 min 🚶 | €650      | €495 |
| Résidence St Mandé Single room, en-suite                    | 40 min 🚶 | €495      | €420 |
| Résidence Bagnolet Single room, private bathroom            | 40 min 🚶 | €495      | €420 |
| Noisy-Le-Grand Single room, private shower, shared bathroom | 40 min 🚶 | €295      | €270 |

| Family residence                   | Time     | 1-4 weeks | 5+   |
|------------------------------------|----------|-----------|------|
| Résidence St Mandé 1-bed apartment | 40 min 🚶 | €850      | €770 |

(max 2 adults/2 children)  
Residence prices include local stay tax

### Other charges

| Prices per booking        |                 |
|---------------------------|-----------------|
| Registration Fee          | €80             |
| Accommodation Booking Fee | €50             |
| Bank Charges              | €12             |
| Exam Fee - DALF/DELF*     | To be announced |

| Prices per week |    |
|-----------------|----|
| Materials Fee   | €6 |

\* Optional Charges

### Transfers

| Airport/Station           | One Way |
|---------------------------|---------|
| Orly Airport              | €115    |
| Charles de Gaulle Airport | €115    |
| Any Paris Train Station   | €90     |

All prices are subject to change



▲ Noisy-Le-Grand Residence  
2 Bd du Levant,  
Noisy-le-Grand 93160

### Quick Facts

#### Room Types

Single 🛏

Studio 🛏🛏

1-bed apartment 🛏🛏

#### Board Types

**Bed & breakfast:** Room and breakfast provided

**Half Board:** Room, breakfast and one evening meals provided

**Self-catering:** Room provided without meals

Residences are self-catering

#### Bathroom Types

**En-suite:** Bedroom with adjoining private bathroom

**Shared Bathroom:** Bathroom shared with other residents and/or host family

**Arrival and departure day:**  
Sunday to Saturday



# Cyprus

## Course Fees

### General English and IELTS Preparation

Prices and lessons are per week

| Course             | Lessons | 1 to 11 | 12 to 23 | 24+  |
|--------------------|---------|---------|----------|------|
| Standard           | 20      | €245    | €205     | €170 |
| Intensive          | 25      | €295    | €235     | €200 |
| Combination course | 30      | €545    | €485     | €440 |

IELTS Preparation Available in Standard 20 lessons. Can be combined with General English as part of an Intensive or Super Intensive Course  
Minimum level for IELTS preparation: B1

| One-to-One and Small Group | Lessons | Price            | Extra lesson |
|----------------------------|---------|------------------|--------------|
| One to One lessons         | 5       | €250             | €50          |
| Additional person          |         | €15 (per lesson) |              |

### Family and Young Learners

| Family Options | Lessons | 1+   | Extra adult/child |
|----------------|---------|------|-------------------|
| Parent & Child | 20      | €470 | €210              |

| Young Learner (age 5 - 15) | Lessons | 1+   |      |
|----------------------------|---------|------|------|
| Standard English           | 20      | €260 | €210 |

### Summer Camp

| Course & ages                  | Accomm. & Catering        | Lessons | Dates               | Price |
|--------------------------------|---------------------------|---------|---------------------|-------|
| UCLan Summer Camp (ages 12-17) | Twin en-suite, full-board | 20      | 18 June - 13 August | €875  |
| Limassol Day Camp (ages 7-15)  | Lunch + snack, no accomm  | 20      | 19 June - 11 August | €385  |



▲ 138 Vasileos Constantinou Limassol 3080 Cyprus

### Quick Facts

#### All Courses Include

Online placement test  
Welcome activity  
Organised Social Programme  
End of Course Certificate  
WiFi

#### English Courses

Minimum age: 16  
Minimum stay: 1 week  
Courses start: Every Monday  
Class Size: Max 15, Low season avg. 6, High season av. 12

#### English Lessons

1 lesson: 45 min  
20 lessons: 15 hrs/week  
25 lessons: 18.75 hrs/week  
30 lessons: 22.5 hrs/week

#### Family Options

Parent & Child, Young Learner (Mon-Fri)  
Tuition only  
Day Camp (Mon-Fri)  
Tuition, lunch and half day activities

Course schedule is subject to availability

#### Centre Closure Dates

1-6 Jan 5 Jun  
27 Feb 15 Aug  
14,17 Apr 25 Dec-5 Jan  
1 May 2024



# Cyprus

## Accommodation, Transfers and Other Fees

### Accommodation

Prices are per week

| Student Residence & Hotel Age 18+<br>Age 18+ and accompanied children | Winter rate                   | High season  |
|---|-------------------------------|--------------|
| Student Residence   | 1 Jan-31 May,<br>1 Nov-31 Dec | 1 Jun-31 Oct |
| Student Residence Single En-Suite SC                                  | €285                          | €535         |
| Student Residence Twin En-Suite SC                                    | €205                          | €330         |

| Triple/Quad Rooms<br>€100 p/w | Bed & Breakfast<br>€56 p/w (adult) €28 p/w (child) | Half Board<br>€112 p/w (adult) €56 p/w (child) |
|-------------------------------|--|--|
|-------------------------------|--|--|

Residence includes shuttle bus to and from school if booked directly through English in Cyprus  
Residence facilities including reception, catering and pool are not available between November and March

| Hotel & Apartment                               | 1 Jan-30 April,<br>1 Nov-31 Dec | 1 May-31 Oct |
|---|---------------------------------|--------------|
| Tasiana Star Hotel Apartment Single En-Suite SC | €365                            | €485         |
| Tasiana Star Twin Hotel Apartment En-Suite SC   | €225                            | €300         |
| Navarria Blue Hotel Single En-Suite BB          | €370                            | €480         |
| Navarria Blue Hotel Twin En-Suite BB            | €220                            | €270         |

| Tasiana Star<br>Bed & Breakfast 42 p/w |
|--|
|--|

| Homestay Age 16+       | B&B  | Half Board |
|------------------------|------|------------|
| Single Shared Bathroom | €200 | €250       |

Students in a single room may be housed in the same homestay as other students

| Homestay Summer Supplement<br>4 Jun - 3 Sep €30 p/w | Dietary supplements<br>€30-55 p/w |
|---|-----------------------------------|
|---|-----------------------------------|

| Summer Residence Age 18+ Self Catering |      |
|--|------|
| 1-Bed Studio                           | €260 |

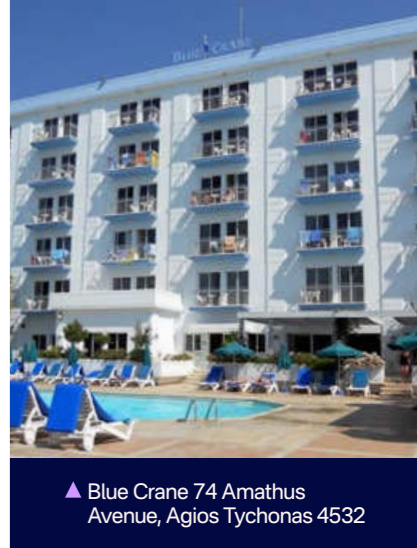
Available 01 July - 31 August

### Other charges

| Prices per booking                     |                                  |
|--|----------------------------------|
| Registration Fee                       | €70                              |
| Accommodation Booking Fee              | €50                              |
| English in Cyprus Shuttle bus per week | 1-2 people €75<br>3-4 people €90 |
| Credit card fee                        | 1.50%                            |
| Prices per week                        |                                  |
| Materials Fee                          | €6                               |

\* Optional Charges

All prices are subject to change



▲ Blue Crane 74 Amathus Avenue, Agios Tychonas 4532

### Quick Facts

#### Room Types

Single 🛏  
Twin 🛏🛏  
Studio 🛏🛏

#### Board Types

**Bed & breakfast (BB):** Room and breakfast provided  
**Half Board:** Room, breakfast and one evening meals provided  
**Self-catering (SC):** Room provided without meals

Residences are self-catering  
Summer Residence self-catering

#### Bathroom Types

**En-suite:** Bedroom with adjoining private bathroom  
**Shared Bathroom:** Bathroom shared with other residents and/or host family

Arrival and departure day:  
Sunday to Sunday





# Find out more

## Agent enquiries

Our agents are appointed experts in your country and can give you specialist advice on our courses, as well as any visa requirements. Contact us for an agent in your area. For agent sales enquiries please contact us at [partners@bayswater.ac](mailto:partners@bayswater.ac)

## Email us

[partners@bayswater.ac](mailto:partners@bayswater.ac)

## Call us

+44 (0)20 7221 7259

## Visit us

167 Queensway, London W2 4SB

 [bayswatercollege](#)

 [studybayswater](#)

 [bayswater.ac](#)

A social education enterprise  
made in London

