



ABILITY
English

Say
Hello
to the world in
English

Hola Ciao Bonjour
你好 こんにちは
Ahoj Olá 안녕하세요
السلام عليكم স্বাগতম



Highly
Commended

2016

ENGLISH AUSTRALIA

QUALITY | SUPPORT | ASSURANCE

Innovation in ELICOS awards

Pronunciation & Fluency Course

WINNER

VICTORIAN INTERNATIONAL EDUCATION AWARDS 2015

Excellence in English Language Training

WINNER

2011

ENGLISH AUSTRALIA

QUALITY | SUPPORT | ASSURANCE

Innovation in ELICOS Awards

General English Plus Course

Say HELLO to the future You



OUR CAMPUSES

Nationality Mix	05
Sydney & Melbourne	07
Campus Culture	09
International Friends	11

OUR COURSES

English for Conversation, Work and Study	13
General English	15
Pronunciation & Fluency	17
Survivor English	19
Cambridge Test Preparation	21
IELTS Test Preparation	23
General English Plus	25
English for Academic Purposes	27
Academic Study Plans	29
ABILITY Weekly Extras	30
Day English	32
Evening English	33

OUR TEAM

Brilliant Teachers	35
Student Support	36
English Support	37
Housing Support	39

Explore the world

**Meet people
in Australia from
around the world**

Expand your choices

**Award-winning
courses for all
conversation
work or study
goals**

Connect to people

**Help and
support from
great teachers
and staff you
will never forget**



Come to Australia and meet the world

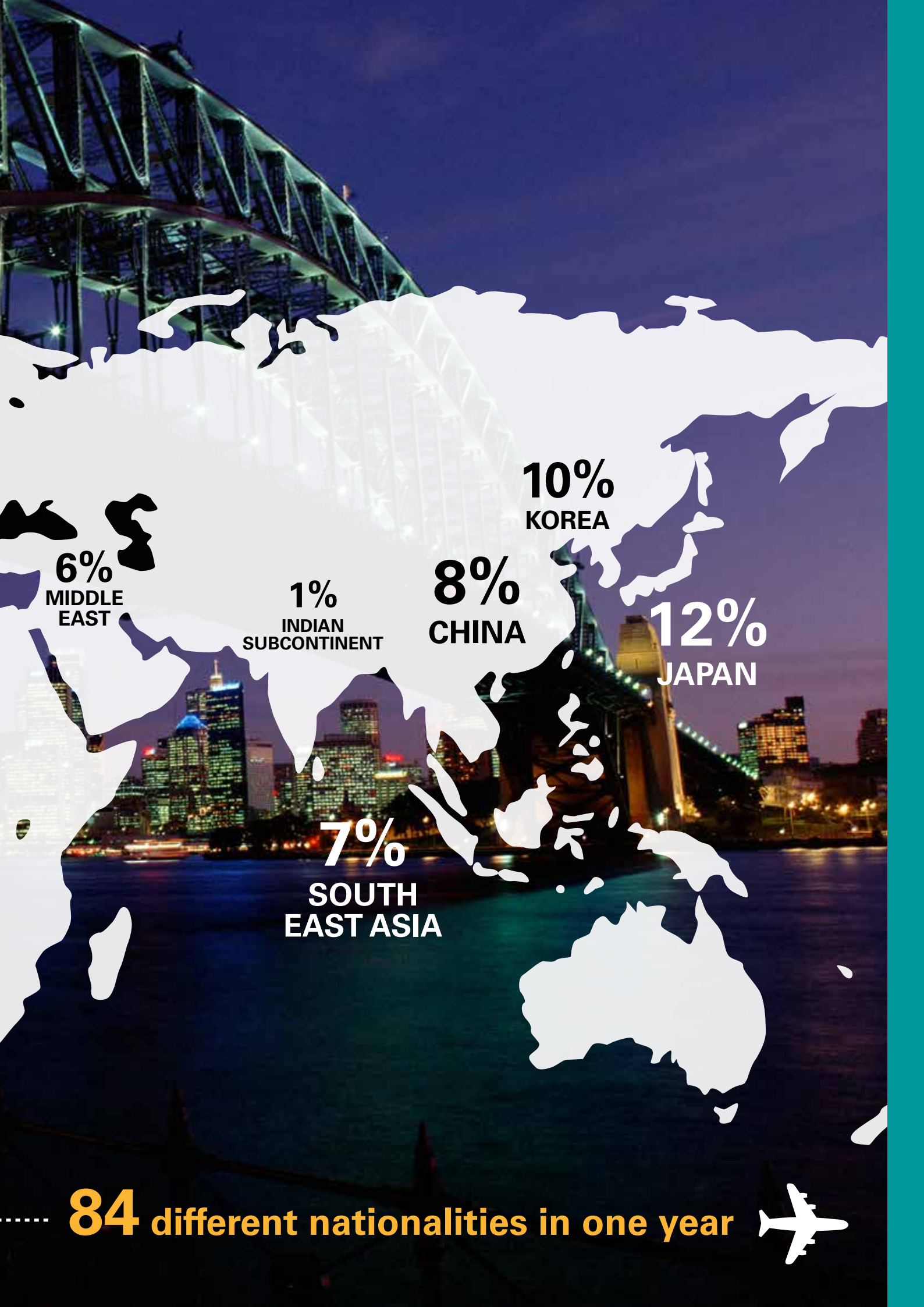


22%
WESTERN
EUROPE

8%
CENTRAL
EUROPE

13%
LATIN
AMERICA

14%
BRAZIL



6%
MIDDLE
EAST

1%
INDIAN
SUBCONTINENT

8%
CHINA

7%
SOUTH
EAST ASIA

10%
KOREA

12%
JAPAN

84 different nationalities in one year



Melbourne

- Café culture
- European-style city
- Yarra River
- Safe & clean
- Live music
- Work opportunities
- Great restaurants
- Designer shopping
- Vibrant nightlife

CLOSE TO THE CAMPUS

- » Flinders St Station and central bus/tram stops
- » Major museums and art galleries
- » Tourist sights: Yarra River, Federation Square, Royal Botanic Gardens
- » Famous laneway cafes and bars
- » Great shopping
- » Easy tram ride to St Kilda Beach
- » Queen Victoria food markets
- » Affordable restaurants from around the world
- » World famous sporting events: Australian Open, Grand Prix, MotoGP



Campuses in Australia's most famous cities

Federation Square, Melbourne



Bondi Beach, Sydney

Sydney

- Beautiful beaches
- Safe & clean
- World-famous tourist sights
- Work opportunities
- Delicious food
- Friendly people
- Outdoor lifestyle
- World class surfing

CLOSE TO THE CAMPUS

- » Central train and bus station
- » Tourist sights: Darling Harbour, Opera House, Harbour Bridge, Royal Botanic Gardens
- » Major museums and art galleries
- » Fresh food markets
- » Great shopping
- » Easy transport to Sydney's most famous beaches
- » Sydney's university district
- » Affordable restaurants from around the world





OUR CAMPUSES

Campus Culture

Your home away from home

ABILITY English campuses are designed to maximize your learning. Our classrooms are light-filled, bright and comfortable, with projectors and wifi access. We have multiple student computers throughout our campuses and large well-equipped kitchens. There are many student socialising areas throughout the campuses to help you make friends and practice English in the college.

CAMPUS FEATURES	SYDNEY	MELBOURNE
Classrooms	29	29
Student lounges	2	2
Student computers	41	40
Free wifi	Yes	Yes
Student kitchens	2	3
Free tea and coffee	Yes	Yes
Free ABILITY cup	Yes	Yes
Free ABILITY notepad	Yes	Yes
Microwaves	17	23
Student fridges	3	4
Multimedia projectors in all classrooms	Yes	Yes
Computer rooms for self-study	Yes	Yes
Balcony	Yes	No
Prayer room	Yes	Yes
First Aid room	Yes	Yes
Wheelchair access	Yes	Yes





Excursions



Melbourne Culture Day



Boat Parties



Social Activities



ABILITY Short Film Festival



Sydney Culture Day

OUR CAMPUSES

International Friends

Study other cultures, learn from personal experience

ABILITY English is famous for attracting students from a wide range of countries. Because you will be studying with students from every continent you will build a diverse network of international friends, future colleagues and contacts.

To help you practice English and make friends with your fellow students we organise many social events. To experience the beauty and adventure of Australia with friends from around the world is one of the best ways to improve your English.

EVERY WEEK

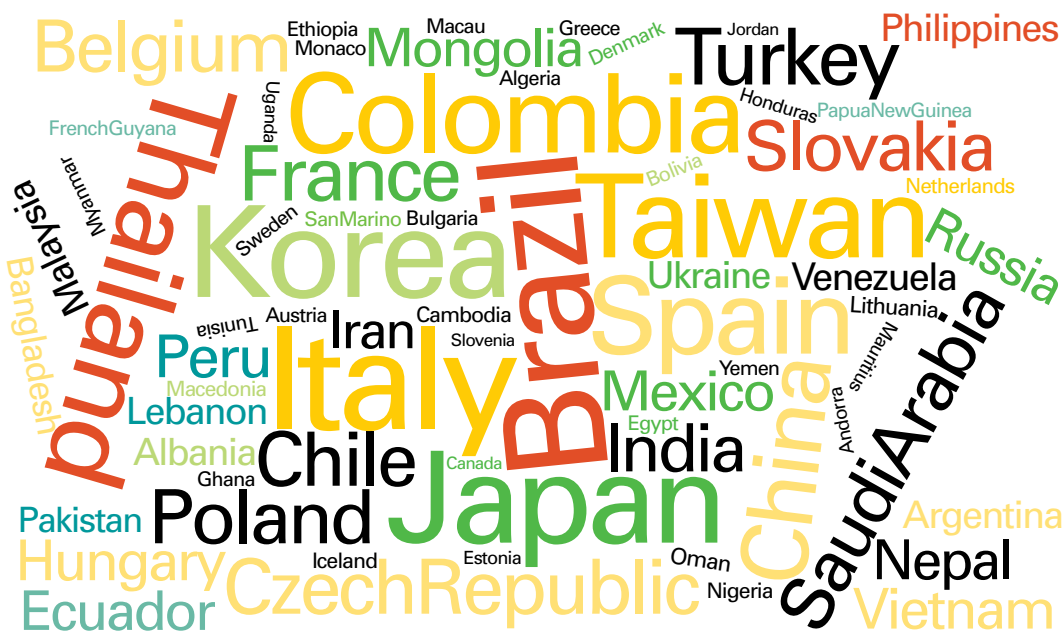
We have college yoga classes and soccer games with English teachers, as well as excursions around the city.

EVERY MONTH

We have an ABILITY party at a local venue with different dress up themes.

MAJOR COLLEGE EVENTS

We have end of term excursions and big social events for the whole school somewhere special, such as a boat cruise, a short film night and our famous culture day where we all share our culture.



Innovative English courses for all communication goals

English for Conversation

The more you speak English, the more you master English

We are constantly challenging you to speak English as much as you can. Practice is the only way you are going to improve, so we have designed our courses to give you maximum conversation practice. We give you a very high level of error correction when you make mistakes so you understand and can change. We even help you find new ways to practise with native speakers!

English for Work

Invest in your future global career

We live in a globally-connected world speaking English for business. English in the workplace is more common now than ever before. More and more employers around the world are asking for Cambridge English Certificates from their employees. We fully prepare you for the Cambridge tests to help you gain the job of your dreams.

English for Study

Expand your potential and take your study further

Our expert teachers fully prepare you for any course you want to study and push you to be your academic best, so you get all the practice and help you need for the best possible results. Many Australian colleges trust ABILITY courses and partner with us because we prepare our students so well.

ABILITY Courses

		SPEAKING & LISTENING	PRONUNCIATION	INTERCULTURAL COMMUNICATION	WRITING & READING	VOCABULARY	GRAMMAR	ACADEMIC PREPARATION	PRESENTATIONS	WEEKLY TESTING
Conversation	GENERAL ENGLISH	✓✓	✓	✓	✓	✓✓	✓✓		✓	✓
	PRONUNCIATION & FLUENCY	✓✓	✓✓	✓✓		✓✓	✓		✓	✓
	SURVIVOR ENGLISH	✓✓	✓	✓✓	✓	✓✓	✓		✓✓	✓
Work	PET CAMBRIDGE TEST PREPARATION	✓✓	✓	✓	✓✓	✓✓	✓✓	✓		✓✓
	FCE CAMBRIDGE TEST PREPARATION	✓✓	✓	✓	✓✓	✓✓	✓✓	✓		✓✓
	CAE CAMBRIDGE TEST PREPARATION	✓✓	✓	✓	✓✓	✓✓	✓✓	✓		✓✓
Study	IELTS TEST PREPARATION	✓✓	✓		✓✓	✓✓	✓	✓		✓✓
	GENERAL ENGLISH PLUS	✓✓	✓	✓	✓✓	✓✓	✓✓	✓✓	✓✓	✓
	ENGLISH FOR ACADEMIC PURPOSES	✓✓	✓	✓	✓✓	✓✓	✓	✓✓	✓✓	✓✓





The fun way to learn English

OUR COURSES

General English

Learn English language for everyday situations

Our General English course teaches all the skills you need to be highly competent in the English language. We make sure all your skills are developed to a high level and we continuously check that you are improving well.

Our teachers work hard to keep your English improving as fast as possible. These classes are fun and interactive, with excellent English and lifelong friends being common results.

Course Features

- » Experienced energetic teachers
- » **Highly interactive sociable classes**
- » Detailed teaching of vocabulary, grammar, listening, speaking, reading & writing
- » **Strong speaking focus**
- » Weekly testing & teacher counselling to go up English levels faster
- » Study options to suit your timetable needs; with Day or Evening courses

Pronunciation



Speaking & Listening



Grammar



Vocabulary



Writing & Reading



Intercultural Communication



Weekly Testing



Presentations



TIMETABLE OPTIONS	LENGTH	START	CORE CLASSES	EXTRA CLASSES	ENTRY LEVEL
Day English	1 - 72 weeks	Any Monday	20 hours Mon to Thurs 8.30 to 14.30 or 9.00 to 15.00	3 hours Friday 9.00 to 12.15	Beginner to Advanced
Evening English	1 - 72 weeks	Any Monday	20 hours Mon to Fri 17.00 to 21.30	3 hours Friday 9.00 to 12.15	Beginner to Advanced



A man with a beard and a woman with glasses are shown in a conversation. The man is on the left, wearing a blue striped shirt, with his hands raised in a gesture. The woman is on the right, wearing glasses and a dark top, looking towards the man. The background is a plain, light-colored wall.

2016

English Australia
ETS TOEFL® Award for
Innovation in ELICOS

HIGHLY
COMMEDED

Start a conversation with confidence

OUR COURSES

Pronunciation & Fluency

Fix your errors and find your English voice

This course is an intense and personalised speaking correction course to help you sound more like a native speaker. It is a full-time focused class that re-trains the way you speak English. We teach pronunciation and fluency skills using a unique teaching method only available at ABILITY English. We give our teachers specialised training in how to analyse your personal speech problems and intensively re-train your speech patterns. The method trains you to build new muscle memory so that your brain and emotions connect better to the English language.

Course Features

- » Learn how to speak English like a native speaker
- » **Unique pronunciation teaching method, only available at ABILITY English**
- » Intensive speaking training
- » Personalised diagnosis of your speaking problems
- » **Builds confidence & fluency**
- » Smaller class sizes for personal attention
- » Builds vocabulary for everyday situations
- » **Improves listening**
- » Use of mouth model to clearly demonstrate corrections needed
- » Intensive error correction & strong training in self-correction techniques

Pronunciation



Speaking & Listening



Grammar



Vocabulary



Intercultural Communication



Weekly Testing

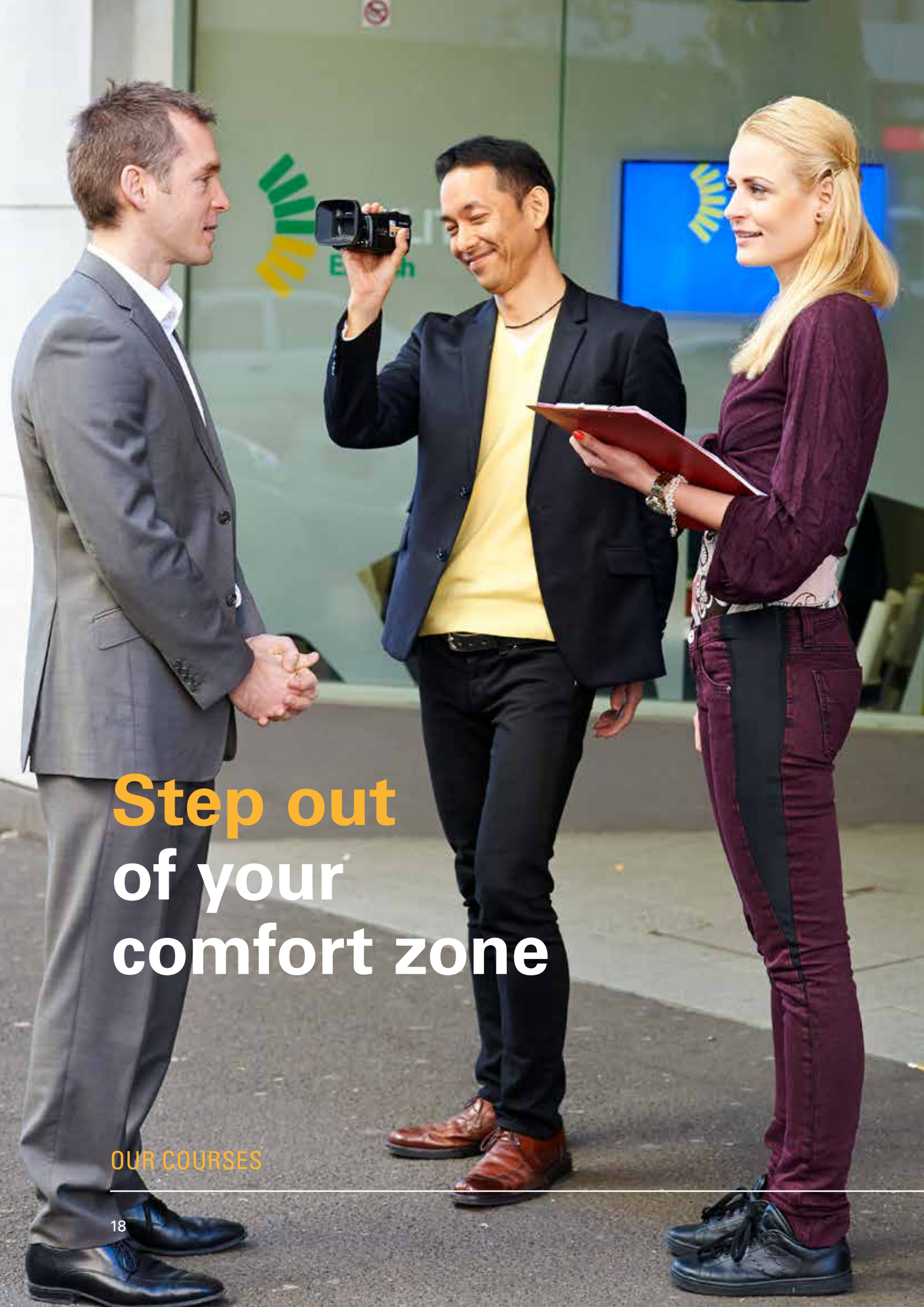


Presentations



STUDY OPTIONS	LENGTH	START	CORE CLASSES	EXTRA CLASSES	ENTRY LEVEL
Day English	5 or 10 weeks	Every 5 weeks	20 hours Mon to Thurs 8.30 to 14.30 or 9.00 to 15.00	3 hours Friday 9.00 to 12.15	Pre-Intermediate to Advanced





Step out of your comfort zone

OUR COURSES

Survivor English

Gain confidence speaking English in real situations

You may feel afraid or shy speaking with locals, so in this course we teach you how to overcome your fears and connect. Every day we teach you practical communication skills with lots of detailed feedback from your teacher, so you are more confidently prepared to manage and control real-life situations that challenge you.

We give you opportunities to practise common, real-life communication using the appropriate language with English speakers in a variety of environments including workplace. You will also be able to enhance your interview skills.

Course Features

- » Regular speaking practice in real situations
- » **Learn how to speak like a native speaker**
- » Highly interactive sociable classes
- » Learn how to interact with others in workplace
- » Builds your confidence with native speakers
- » Builds intercultural communication skills
- » **Experienced teachers giving detailed feedback**
- » Enhance your interview skills
- » **Only available at ABILITY English**

Pronunciation



Speaking & Listening



Grammar



Vocabulary



Writing & Reading



Intercultural Communication



Weekly Testing



Presentations



STUDY OPTIONS	LENGTH	START	CORE CLASSES	EXTRA CLASSES	ENTRY LEVEL
Day English	5 or 10 weeks	Every 5 weeks	20 hours Mon to Thurs 8.30 to 14.30 or 9.00 to 15.00	3 hours Friday 9.00 to 12.15	Intermediate to Advanced



A woman with dark hair pulled back, wearing a bright red V-neck t-shirt, is smiling warmly at the camera. She is holding a red Cambridge English textbook in front of her. The background is a softly blurred indoor setting, possibly a home or office, with a white shelf and a dark object visible on the left.

Write your global success story

OUR COURSES



PET, FCE, CAE Cambridge Test Preparation

Take your English proficiency to the world

The Cambridge PET, FCE and CAE tests are recognised by some of the biggest multinational companies in the world. The test results are also accepted for university and immigration requirements in many countries. We have excellent teachers and years of experience getting students the scores they need. Our Cambridge Test Preparation courses are very comprehensive and will bring great improvements to all your English skills.

Course Features

- » Complete test training & detailed test tips
- » **Personalised student feedback**
- » Experienced Cambridge teachers
- » Closed classes that work intensely together
- » **Full weekly practice tests**
- » We organise your test booking
- » Four course intakes per year
- » Cambridge certificates are valid for life

Pronunciation



Speaking & Listening



Grammar



Vocabulary



Writing & Reading



Weekly Testing



Presentations



STUDY OPTIONS	LENGTH	START	CORE CLASSES	EXTRA CLASSES	ENTRY LEVEL
Day English	10 - 12 weeks	FCE, CAE: 4 intakes per year	20 hours Mon to Thurs 8.30 to 14.30 or 9.00 to 15.00	3 hours Friday 9.00 to 12.15	FCE: Upper Intermediate CAE: Advanced
Evening English	10 - 12 weeks	FCE, CAE: 4 intakes per year (CAE in Sydney only)	20 hours Mon to Fri 17.00 to 21.30	3 hours Friday 9.00 to 12.15	FCE: Upper Intermediate CAE: Advanced
Evening English	4, 8 or 12 weeks	PET Flexi: Every 4 weeks (Sydney only)	20 hours Mon to Fri 17.00 to 21.30	3 hours Friday 9:00 to 12.15	PET: Intermediate



A photograph of students in a classroom. In the foreground, a young man with short brown hair and a light beard, wearing a blue and white plaid shirt, is looking towards the right. Behind him, a young woman with long brown hair, wearing a bright pink long-sleeved shirt, is looking down at a book. In the background, another young man with dark hair is looking towards the camera. The scene is brightly lit, suggesting a window in the background.

Get the tools
you need
to **succeed**

OUR COURSES

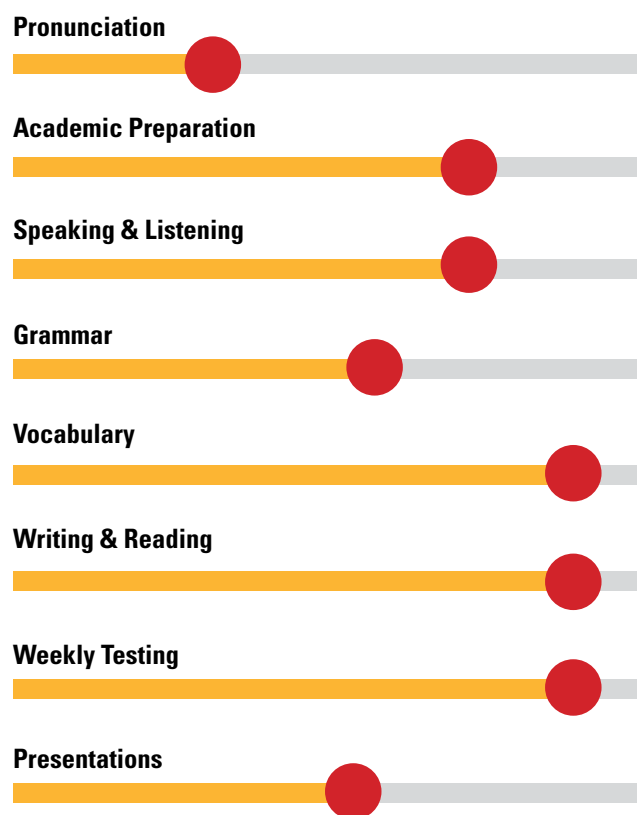
IELTS Test Preparation

ABILITY helps you get the score you need

Your goal could be to study at a university in Australia or any other English-speaking country. Your aim could be to apply for a work visa in an English-speaking country. This course fully prepares you for these goals and the IELTS test. Our expert teachers have the knowledge to get you the IELTS score you need.

Course Features

- » Prepares for both Academic & General IELTS tests
- » Complete test training in the writing, reading, listening & speaking test skills
- » **Weekly full practice tests in real test conditions**
- » Comprehensive vocabulary training
- » Detailed test tips
- » **Personalised student feedback**
- » Help with your test weaknesses
- » Day or evening courses



STUDY OPTIONS	LENGTH	START	CORE CLASSES	EXTRA CLASSES	ENTRY LEVEL
Day English	1 - 14 weeks	Any Monday	20 hours Mon to Thurs 8.30 to 14.30 or 9.00 to 15.00	3 hours Friday 9.00 to 12.15	Upper Intermediate to Advanced
Evening English	1 - 14 weeks	Any Monday	20 hours Mon to Fri 17.00 to 21.30	3 hours Friday 9.00 to 12.15	Upper Intermediate to Advanced
IELTS Part-time Evening @ Sydney Campus only	1 - 14 weeks	Any night Mon - Fri	4 hours - 10 hours per week Mon to Fri (min 2 weeks, 2 classes per week) 19.30 to 21.30	Nil	Upper Intermediate to Advanced



2011
English Australia
ETS TOEFL® Award for
Innovation in ELICOS
WINNER



Our **award-winning** course for fast improvement

OUR COURSES

General

English Plus

Intense & serious study preparing you for academic goals

If you want English learning that takes you quickly towards a focused goal, this course is the best option for you. This course is an option at the Intermediate and Upper Intermediate level of English, and helps you succeed better in IELTS Test Preparation, Cambridge Test Preparation and EAP courses. This is the perfect course if you have academic goals and like to be pushed to study hard for better results.

ABILITY English won the 2011 English Australia Innovation Award for this course because we teach General English in different ways for different types of students.

Course Features

- » **Innovative award-winning course**
- » Develops all English language skills strongly
- » **Serious teaching style**
- » Motivates students to develop academic skills
- » Prepares for study & work goals
- » **Trains you to think critically**
- » Weekly testing & teacher counselling help you to improve your English faster

Pronunciation



Academic Preparation



Speaking & Listening



Grammar



Vocabulary



Writing & Reading



Intercultural Communication



Weekly Testing



Presentations



STUDY OPTIONS	LENGTH	START	CORE CLASSES	EXTRA CLASSES	ENTRY LEVEL
Day English	1 - 72 weeks	Any Monday	20 hours Mon to Thurs 8.30 to 14.30 or 9.00 to 15.00	3 hours Friday 9.00 to 12.15	Intermediate to Upper Intermediate
Evening English	1 - 72 weeks	Any Monday	20 hours Mon to Fri 17.00 to 21.30	3 hours Friday 9.00 to 12.15	Intermediate to Upper Intermediate



Pathway Partners

ABILITY English provides English preparation for some of the most reputable universities and colleges in Australia. We prepare you for academic study so you may not need to take an exam to gain entry. Because our academic preparation courses are very well-respected, many reputable colleges are proud to grant our students direct entry into their Masters, Bachelors and Vocational courses.

PRIMARY PARTNERS



"The University of Newcastle is pleased to collaborate with a reputable partner such as ABILITY English with the same shared values to provide international students direct pathway opportunities and the best possible study experience in Australia." - Associate Director, University of Newcastle



"Holmesglen is proud to be a partner of ABILITY English, one of the most highly recognised and innovative English language schools in Australia. Students undertaking English studies at ABILITY are given every opportunity to strongly develop their language skills to communicate in English with confidence, ensuring that they are capable of meeting their academic challenges." - Rhonda Edwards, Deputy Director, International Centre, Holmesglen.



For more partners visit our ABILITY website: www.ability.edu.au

English for

Academic Purposes

Expert skills training means success at university

Our EAP course prepares you for all the possible language challenges you will experience in a university or college. We thoroughly train you in the challenging skills of writing essays in English, giving presentations in English and understanding the expectations of an English-speaking college or university.

Course Features

- » Direct pathways to many colleges and universities (visit our website for the full list)
- » **Strict academic teaching methods**
- » Dedicated & experienced teachers
- » Strong training in the different genres of academic writing
- » Develop skills in analysing statistics and debating in English
- » Practical instruction on how to take notes in lectures
- » Learn to reference and paraphrase in English
- » Learn to give academic presentations in English
- » **Weekly personalised feedback to aid academic progression**

Pronunciation



Academic Preparation



Speaking & Listening



Grammar



Vocabulary



Writing & Reading



Intercultural Communication



Weekly Testing



Presentations



STUDY OPTIONS	LENGTH	START	CORE CLASSES	ELECTIVE CLASSES	ENTRY LEVEL
Day English	10 weeks	EAP 2 & 3: Every 5 weeks EAP 4: Two intakes per year	20 hours Mon to Thurs 8.30 to 14.30 or 9.00 to 15.00	3 hours Friday 9.00 to 12.15	EAP 2: Intermediate (entry 5.0) EAP 3: Upper Intermediate (entry 5.5) EAP 4: Advanced (entry 6.0)
Evening English	10 weeks	EAP 2: Every 5 weeks EAP 3 (Melbourne only): Every 5 weeks	20 hours Mon to Fri 17.00 to 21.30	3 hours Friday 9.00 to 12.15	EAP 2: Intermediate (entry 5.0) EAP 3: Upper Intermediate (entry 5.5)





Quickly and easily refine your goals

OUR COURSES

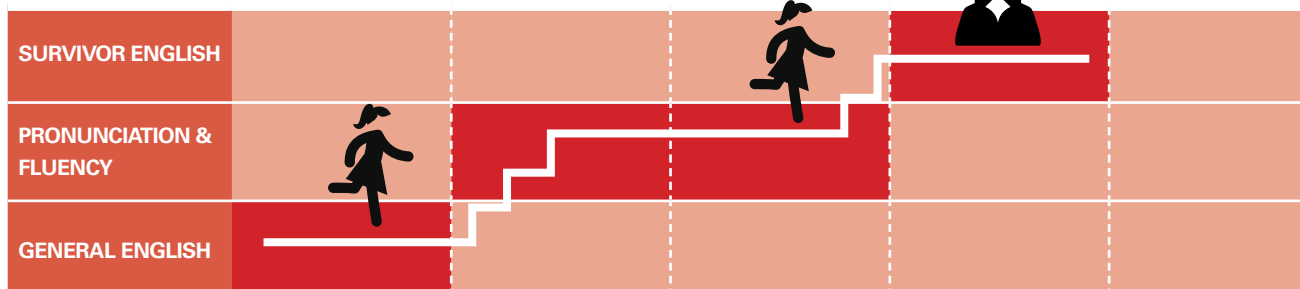
Academic Study Plans

Academic counseling from your first day, to help plan your future

ELEMENTARY IELTS 2.0 - 3.0	PRE INTERMEDIATE IELTS 3.0 - 4.0	INTERMEDIATE IELTS 4.0 - 5.0	UPPER INTERMEDIATE IELTS 5.0 - 6.0	ADVANCED IELTS 6.0+
-------------------------------	--	---------------------------------	--	------------------------

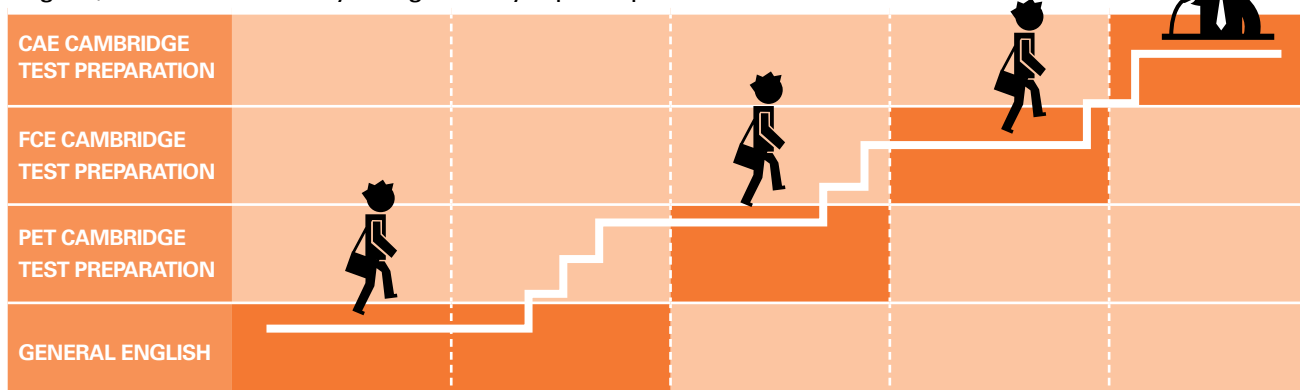
Conversation

Tomoko wants to improve her conversation skills. She is an Elementary student and her goal is to finish as an Upper Intermediate student as a confident speaker of English.



Work

Andreas wants to improve his English quickly and return to Europe to get a great job in a multinational company. He wants to be well-prepared for all possible work situations in English, and wants his study recognised by top companies worldwide.



Study

Min wants to study with an ABILITY English Higher Education pathway partner, so she wants to improve her academic English and critical thinking skills. She wants to make sure she is ready by the start date of her next course.



ABILITY Weekly Extras

Our extra services to help you - free of charge

EXTRA CLASSES

Optional classes every Friday to help you improve quickly

PRONUNCIATION

Build your confidence with interactive activities and detailed error correction.

VOCABULARY

Learn to express yourself better with the greater variety of words.

CONVERSATION & SPEAKING

Improve your speaking and listening in a vibrant social atmosphere.

WRITING

Learn what and how to write in a variety of contexts.

LISTENING – DVD CLUB

Watch movies in English to train your ear for English sounds and accents.

IELTS PRACTICE TESTS

3 hours of testing with the same pressure and intensity that you will experience on your real test day. Afterwards, receive detailed personal feedback.





EXTRA ACTIVITIES

More speaking opportunities with teachers and international friends

SOCCER

Play soccer with college friends and a teacher.

YOGA

Practice yoga at the college with college friends and a teacher.

EXCURSIONS

See the city with a local teacher showing you the sights.

EXTRA HELP

We are always working with you to help you improve faster

JOB CLUB

We help you prepare for work in Australia, showing you where to look, CV writing, taxation and work rights advice.

STUDY PLAN

Academic counseling and study plan session to keep you focused.

BEGINNER SUPPORT

For one free extra hour a week in a small group, a teacher will give you extra personal attention when your English is low.

ENGLISH ONLY COLLEGE

We encourage you to only speak English in the college and reward you when we see you speaking English out of class!



Day English

- » Easy to work in the evening or Friday
- » 20 hours weekly core study Monday to Thursday
- » 3 hours extra optional classes on Friday
- » All visa types

PRONUNCIATION & FLUENCY
SURVIVOR ENGLISH
GENERAL ENGLISH
ENGLISH FOR ACADEMIC PURPOSES
IELTS TEST PREPARATION
CAMBRIDGE TEST PREPARATION
GENERAL ENGLISH PLUS

SAMPLE TIMETABLE

ENGLISH DAY CLASSES	MONDAY	TUESDAY	WEDNESDAY	THURSDAY	FRIDAY
Morning session 1 8:30-10:00 or 9:00-10:30	Test for previous week	Grammar	Vocabulary & Language Use	Listening	Extra Classes
15 mins break					
Morning session 2 10:15-12:15 or 10:45-12:45	Topic Introduction	Reading	Grammar	Writing	Extra Classes
45 mins lunch					
Afternoon session 3 1:00-2:30 or 1:30-3:00	Speaking & Listening	Pronunciation & Speaking	Intercultural Communication	Vocabulary & Speaking	-

SURVIVOR ENGLISH
Day English only

PRONUNCIATION & FLUENCY
Day English only

OUR TIMETABLES



Evening English



- » Classes start conveniently at 5.00pm for day workers
- » All visa types
- » 20 hours weekly core study from Monday to Friday
- » 3 hours optional classes on Friday morning

GENERAL ENGLISH
IELTS TEST PREPARATION
CAMBRIDGE TEST PREPARATION
ENGLISH FOR ACADEMIC PURPOSES
GENERAL ENGLISH PLUS

SAMPLE TIMETABLE

ENGLISH EVENING CLASSES	MONDAY	TUESDAY	WEDNESDAY	THURSDAY	FRIDAY
Evening session 1 5:00-7:00	Test for previous week	Grammar & Reading	Vocabulary & Language Use	Grammar & Writing	Listening
30 mins break					
Evening session 2 7:30-9:30	Topic Introduction	Speaking & Listening	Pronunciation & Speaking	Intercultural Communication	Vocabulary & Speaking



A man in a light blue button-down shirt and khaki pants is smiling and holding a photograph of a large cruise ship. The photo shows a man and a woman standing on a deck, looking at the ship. In the foreground, the back of a woman's head and shoulder is visible, suggesting a conversation. The background is a bright, indoor setting, possibly a meeting room or office.

ABILITY teachers are communication experts

OUR TEAM

Brilliant Teachers

Our teachers are famous for their quality and expertise

ABILITY English is all about unforgettable people, and the teachers you will meet here are very skilled at what they do.

The teachers at ABILITY English have received awards and been invited to present at important English language teaching events and conferences. This is because of their dedication and commitment to being the best English language teachers they can be.

When you arrive at ABILITY English it will be obvious to you that our teachers genuinely care about helping you achieve your study goals and being part of your Australian experience.

COMMUNICATION EXPERTS

- » Highly skilled pronunciation experts
- » Specialist in-house pronunciation training for ABILITY teachers
- » Trainers of other teaching professionals in the industry
- » Strong error correction skills
- » Strong confidence-building skills

ACADEMIC PREPARATION SPECIALISTS

- » High level qualifications
- » Teachers who have published academic papers about English language acquisition
- » Teachers who have presented at industry conferences

COURSE DESIGN PROFESSIONALS

- » Highly commended in the English Australia 2016 Innovation Award for our Pronunciation & Fluency course and in-house pronunciation method
- » Awarded English Australia 2011 Innovation Award for our General English Plus course
- » Received the award for Excellence in International Education – English Language Training at the Victorian International Education Awards in 2015

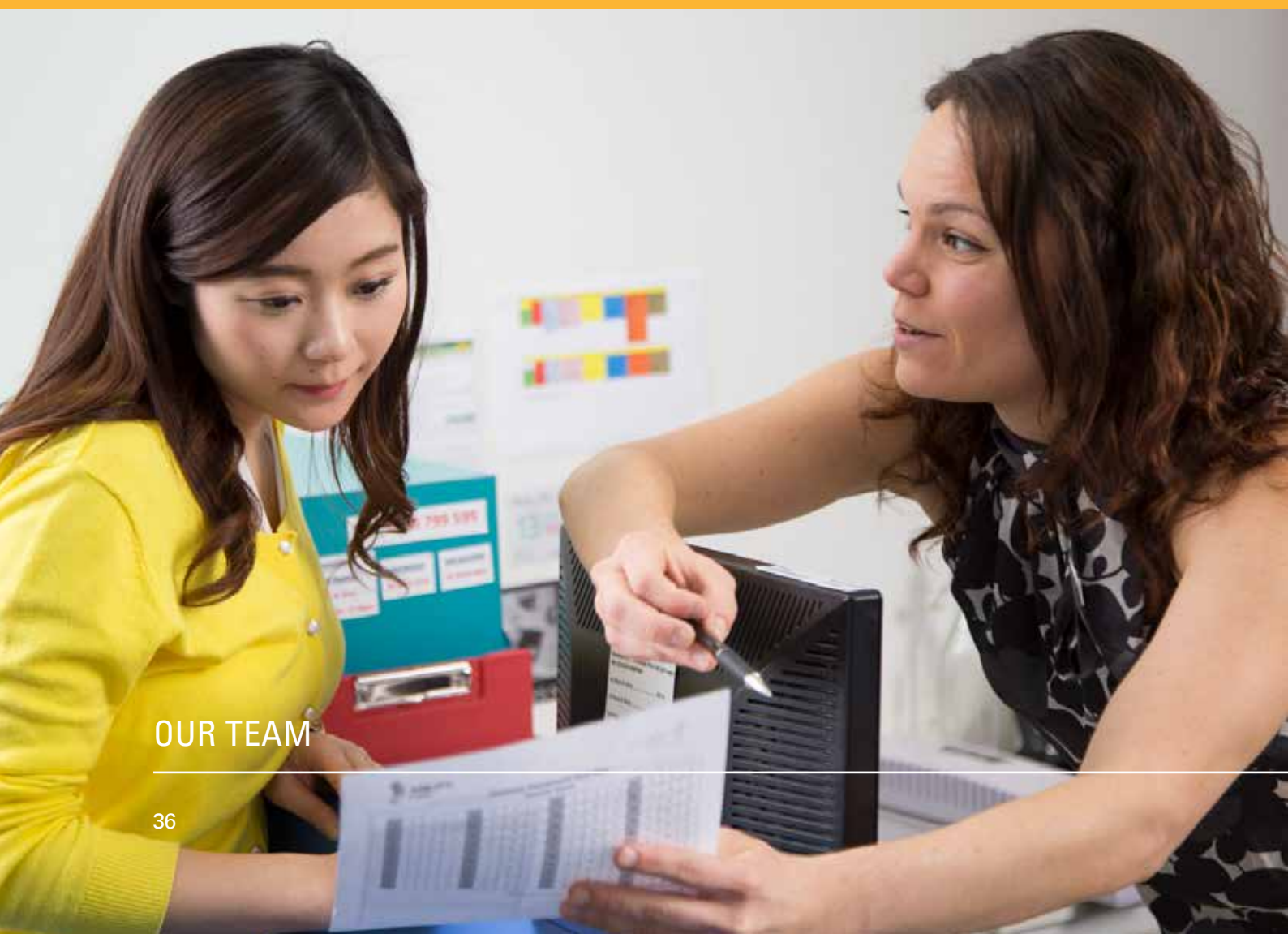


Student Support

We look after your worries, you look after your studies

Studying in another country is exciting, and sometimes also confusing! We have friendly support staff ready to help you with everything you need, and they can speak many different languages. The support staff are available from 8:30am to 7:30pm Monday to Friday, and can help you with:

- » understanding life in Australia
- » booking student activities
- » medical service information
- » navigating a new city
- » information about mobile phones and banking
- » information about the college classes and timetables
- » problems and concerns
- » information about weekend activities
- » help with housing
- » student counseling



OUR TEAM



English Support

Speak English only with the help of our 'ENGLISH ONLY EMU'

At ABILITY English we encourage you to speak English all day, every day. We know it is tempting to speak your own language with other students, so we have a big Australian Emu bird walking around the school each week to help you remember to speak English.

The Emu bird looks for students speaking in English and rewards them with chocolates. Our star students are congratulated on facebook, showing the entire college community how determined they are to speak English.

BEGINNER SUPPORT

When you first start learning English it can be very difficult. If you are a beginner student we give you extra support each week at no extra cost. You can come to our Beginners Support class and a teacher will give you personalised attention and answer all your questions.





**Different people,
different lifestyles,
different housing
solutions**

Housing Support

Speak English day and night

Every day we see how much faster our students improve their English when they are living with native speakers or with international friends. We offer a housing placement service if you want to speak English at your Australian home, and have full-time staff at the college to help with any housing problems.

INDEPENDENT ACCOMMODATION

- » Different housing options for different prices
- » Student housing: Housing designed especially for students, with internet, desk and study area
- » Backpackers: Housing designed especially for travellers - cheap, good locations, very social environment
- » Lodges/Guest houses: Independent accommodation within a big house - your own room, some cooking facilities, like a home

HOMESTAY ACCOMMODATION

- » Stay with a local English-speaking family
- » Learn about Australian culture
- » Practise your English day and night
- » Mon-Fri: breakfast and dinner provided
- » Weekends: breakfast, lunch and dinner provided
- » All accommodation less than 50 minutes from ABILITY campus by public transport
- » Great option for younger students

COST OF LIVING IN AUSTRALIA

We want to start helping you now in the same way we will when you arrive in Australia. This table shows monthly estimated costs of services and goods in Australia that you are likely to need. We hope this helps you with your study and travel planning.

The cost of living in Melbourne is cheaper than in Sydney, mostly due to the cost of housing.

Source: http://www.numbeo.com/cost-of-living/compare_cities

COST OF LIVING IN AUSTRALIA	
Per Month	AUD\$
Share housing	\$400-\$1000
Utilities for a small apartment (Electricity, heating, water)	\$175
Regular public transport pass	\$150
Internet (broadband, wifi)	\$70
Pre Paid Mobile	\$20-\$50
Groceries	\$500
Per Item	AUD\$
Cheap Meal	\$8-\$15
Coffee	\$3-\$4
Beer	\$5-\$8





Say **HELLO** to the **future** You

contact us
info@ability.edu.au
www.ability.edu.au

Sydney City Campus

10 Quay Street
Sydney, NSW 2000, Australia
Phone +612 9211 4161
Fax +612 9211 4899

Melbourne City Campus

Level 3, 55 Swanston Street
Melbourne, VIC 3000, Australia
Phone +613 9639 0000
Fax: +613 9650 6476