

# Regent Language Training



Your Future.  
In English.

2017



# Welcome to Regent

Regent was one of the first groups of English language schools in the UK. It was established over 50 years ago in 1964 by a passionate, experienced teacher who wanted to found a proper school, with proper teachers and proper courses. Today Regent offers innovative courses in a choice of academically and culturally rich locations that create life changing opportunities for our students. Fundamentally, we understand that *knowing about* English is not enough – what is important is the ability to successfully *use* English in your life.

## Positive, inclusive, results focused

Our core values shine through our programmes. We aim for a learning environment which is:

### Positive

We believe that everyone can learn to use English effectively, and whatever your current ability we push you to be a more effective communicator. We have high expectations of you and believe you are able to achieve the goals you have, and more.

### Inclusive

By being part of our learning community you are surrounded by others with similar ambitions, which helps you to bring out your best. *Whole school* activities like morning plenaries, workshops and social events provide opportunities for you to connect meaningfully with staff and others in the school.

### Results focused

We know that a course with Regent can change your life – helping you to excel in your job, win a promotion or a place at university. We help you to think about your future in English, perhaps helping you to clarify or enrich your goals, and through regular assessments we keep you on track to achieve the results you want.

We look forward to meeting you on a Regent course.

## Contents

Supported learning with Regent	4
<b>Courses</b>	
English World	6
Examination Preparation	8
Mini Group Courses	10
Individual Tuition	12
Home Tuition	13
Summer Camps for ages 7-17	14
<b>Locations</b>	
<b>England</b>	
Bournemouth	17
Brighton	18
Cambridge	21
London	25
Oxford	27
<b>Scotland</b>	
Edinburgh	22
Terms and Conditions	28
Enrolment Form	29

## Why choose Regent?

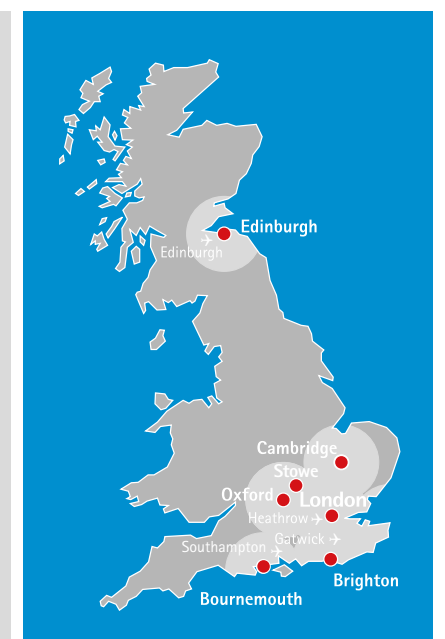
- **The Regent values** of positivity, inclusivity and a results focus shine through our programmes
- **You learn English effectively** – highly structured courses lead to confidence and competence
- **Our innovative courses** go beyond language; we also build your skills, motivation and confidence
- **All ages** – summer camps for age 7-12, 13-17, and 6 year-round schools for professionals, adults and students (age 16+)
- **An inclusive, academic community** – plenaries, the learning lounge, lectures and cultural events create a powerful learning environment
- **See progress** – we have regular tests and video assessments to show you your progress
- **Stylish, well equipped schools**, purposefully designed to enhance the communal learning experience
- **Service** – we are here to help and proud of our service

## Regent Promise

When you study with us you get more than just lessons in a classroom. Our programmes can be life changing. Regent promise a unique course for every learner.

Each student has:

- a welcome and orientation on their first day
- an individual assessment of language ability and needs
- a weekly coaching session with a personal tutor
- the opportunity to take an exam
- video feedback on their spoken performance
- a group project to develop international team working skills
- use of multi-media and study resources on all courses
- an activity and excursion programme
- counselling for future work or academic life





## Supported learning with Regent

### Your progress matters

We are passionate about your learning experience and work hard to ensure that you leave us with significantly developed skills, confidence and performance in English.

You can expect to make good progress every week. We have a strong *supported learning* framework to help you learn effectively. We have a unique academic programme, with a syllabus linked to the Common European Framework. As well as grammar, vocabulary and pronunciation, we work on your spoken performance with tasks focusing on body language, voice quality and eye contact. We ask you

to work in international teams to develop useful life skills and encourage you to take at least one exam. We set progress tests and structured homework tasks to provide clear support to your learning. On at least 4 mornings a week students join a short, thought-provoking plenary session e.g. on personal qualities, leadership or culture.

### Your teacher

Our teachers are our greatest strength and are the main reason for the success of our students. They are passionate about teaching and helping you to develop.

Whatever your level, we push you towards taking an external English language qualification to show your achievement. The longer you stay, the more progress you make.

	Beginner	Elementary	Elementary to Pre-intermediate	Pre-intermediate to Intermediate	Intermediate to Upper Intermediate	Upper Intermediate to Advanced
Exam options available	IELTS 1 BULATS	IELTS 2-3 BULATS	IELTS 4 BULATS TOEFL iBT up to 46 Cambridge KET	IELTS 4-5 BULATS TOEFL iBT 46-61 Cambridge PET	IELTS 6-7 BULATS TOEFL iBT 61-100 Cambridge FCE	IELTS 8-9 BULATS TOEFL iBT 100-120 Cambridge CAE/CPE
Common European Framework	A1	A2	A2 / B1	B1	B2	C1 / C2

### Learning outside the classroom

Learning does not only happen in our lessons but continues outside the classroom. Throughout your time with us we want to help you practise your English skills – in the learning lounge, in your accommodation and out at cultural events. That is why we make the school a welcoming and inclusive place where you can easily make friends and build your confidence in another language.

### Cultural activities and events

The cultural programme is designed to help you make new friends and discover modern local culture.

Often accompanied by your teachers or other school staff, this is the perfect way to have a great time with your friends, use your English and experience authentic local culture.

At least three events are offered each week. The programme includes activities such as a barbecue, film night, quiz night, trip to a local pub or sports activity.

Approximate costs are available at: [www.regent.org.uk/learn-English/leisure](http://www.regent.org.uk/learn-English/leisure).

### Weekend excursions

Typical excursions include: London's West End, Stonehenge, Loch Ness, Leeds Castle, Oxford, Cambridge and overseas trips to many cities in Europe.

### Choice of accommodation

We know how important your accommodation is, and so we offer a wide choice.

#### Homestay

Many students choose homestay – living with local people in their own home. Living with a family gives you the opportunity to practise what you have learned in your lessons and provides an authentic cultural experience.

#### Self-catering or residential accommodation

This option gives you more independence and allows you to experience life in a student university style residence.

#### Hotels and apartments

Alternatively, we offer a range of hand-picked hotels and apartments. Please contact us for more information.

### Students aged under 18

Please see pages 13-15 for our specialist residential, homestay and home tuition courses for children and teenagers aged 7-17. Students aged 16 and 17 are welcome to study in a Regent school (pages 16-27) and will mix with adults in school and on our cultural events. We offer appropriate levels of pastoral care and welfare support in school and on our events to these students. Students may not be supervised in the evenings and at weekends and we encourage under 18s to spend time with their homestay hosts. If parents or guardians are looking for more support, please consider our Regent Summer School or Home Tuition courses.

Please refer to our guidelines on under 18s at [www.regent.org.uk/policies](http://www.regent.org.uk/policies).





## English World Courses

- Improve your knowledge, skills and confidence in using English internationally
- Clarify and enrich your goals through personal coaching
- Learn in a maximum group size of 12

English World courses are designed to have an impact on your present and future life in an international environment. Our unique programme has five complementary elements that help you operate confidently and successfully when using English as an international language.

Skills Training develops your speaking, listening, writing and study skills in English in real life contexts.

The Accuracy in Grammar session perfects core grammar skills and works on the eradication of common errors.

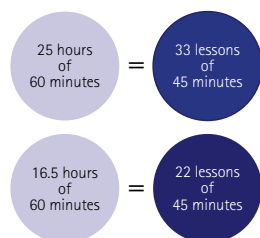
The Knowledge for a Global Community class is at the centre of the course. Through individual and team-based research, you work on a broad range of historical, economic, sociological, artistic and cultural topics designed to equip you with the knowledge to function more effectively in the global community. You present your findings in a range of debates, presentations, and group work activities.

The Language Focus session builds reading, writing and vocabulary use in authentic contexts e.g. business writing for emails and reports.

In the Confident Spoken Performance session you develop your confidence and skills in a range of speaking situations through mini role-plays, presentations and public speaking activities. With a focus on rapport building, voice quality, body language, posture and eye contact, we help you display a confident personality in English.

### Personal Coaching

Every student receives an individual 15 minute coaching session each week, in which goals are set or reappraised, challenges given and progress reviewed. On longer courses we stretch learners by setting additional tasks on which the personal tutor provides feedback.



## English World 33

This intensive course comprises 25 hours (one hour = 60 minutes) of study per week, plus 1.5 hours of plenaries, workshops and a coaching session.

### Sample Timetable

08.45 - 09.00	Plenary
09.00 - 10.00	Skills Training
10.00 - 10.15	Break
10.15 - 11.15	Accuracy in Grammar
11.15 - 11.30	Break
11.30 - 12.30	Knowledge for a Global Community
12.30 - 13.30	Lunch
13.30 - 14.30	Language Focus
14.30 - 14.45	Break
14.45 - 15.45	Confident Spoken Performance

Timetables are samples and may be subject to change.

### Fees per week

Bournemouth, Brighton, Edinburgh, Cambridge, Oxford London*				
No of weeks	2-3	4-7	8-11	12-52
English World 33	£412	£382	£352	£327

\* London: please add a supplement of £25 per week.

For a 1 week course, add a supplement of £90 to the 2-3 week price above.

## English World 22

This course comprises 15 hours (one hour = 60 minutes) of study per week, plus 1.5 hours of plenaries, workshops and a coaching session. Timetable 08.45-12.30 as above.

### Fees per week

Bournemouth, Brighton, Edinburgh, Cambridge, Oxford London*				
No of weeks	2-3	4-7	8-11	12-52
English World 22	£298	£288	£278	£268

\* London: please add a supplement of £14 per week.

For a 1 week course, add a supplement of £90 to the 2-3 week price above.

### English World dates and entry level

All courses start every Monday throughout the year. Students should arrive on the Sunday. Suitable for beginner to advanced.

## English World Combination

Make your course more intensive by adding 5 hours of 1:1 lessons to the English World 33 course (normally taught 16.00-17.00).

### Fees per week

Bournemouth, Brighton, Edinburgh, Cambridge, Oxford London*				
No of weeks	2-3	4-7	8-11	12-52
English World Combination	£808	£778	£748	£723

\* London: please add a supplement of £49 per week.

For a 1 week course, add a supplement of £90 to the 2-3 week price above.

## Arts, Literature and Culture

This course is designed for the sophisticated, intellectual student who has a passion for learning and already has a good level of English. It includes 50 hours of tuition over 2 weeks. The course has three main areas: Literature Analysis, Writing Workshop, and Arts and Culture.

### Sample Timetable

09.00 - 11.15	Literature Analysis
11.30 - 12.30	Writing Workshop
13.30 - 15.45	Arts and Culture

### Fees per course

	Dates	Fees
Oxford	09.07-22.07, 23.07-05.08	£934
Edinburgh	06.08-19.08, 20.08-02.09	£934

25 hours per week (max 12 per class). Each lesson is 60 minutes. Course includes a cultural programme.

Entry level: Upper Intermediate.





## Examination Preparation

- IELTS, Cambridge and TOEFL exam preparation
- Focused study for a term, semester or academic year
- Achieve qualifications for your future in a maximum class size of 12

### IELTS Exam Preparation

The IELTS exam is recognised by universities, colleges and professional bodies for university entrance.

For more information please see page 31.

We believe that just doing practice IELTS exams and exercises is not the best way to raise your IELTS level. To be successful in this exam you need a wide range of vocabulary and syntax. Our course is designed to build these areas using engaging, authentic situations while providing plenty of exam skills and practice. Through weekly reviews and coaching, monthly tests, regular filming and mock IELTS tests we measure your progress clearly and visibly to highlight strengths, needs and objectives.

#### Our course helps you to:

- be confident in handling all aspects of the exam
- express your thoughts and opinions fluently
- use grammar and vocabulary effectively
- overcome anxiety with intensive exam practice

#### Add extra individual lessons

Make your course more intensive by adding 5 one-to-one hours per week for extra exam focus.

#### University counselling service

We offer a free educational counselling service. Our university counsellor advises on the best courses and universities for you.

#### Sample timetable

09.00 – 10.00	Skills Training
10.00 – 10.15	Break
10.15 – 11.15	Accuracy in Grammar
11.15 – 11.30	Break
11.30 – 12.30	Knowledge for a Global Community
12.30 – 13.30	Lunch
13.30 – 14.30	Examination Focus
14.30 – 14.45	Break
14.45 – 15.45	Exam Skills Spoken Performance
15.45 – 16.00	Break
16.00 – 17.00	Individual lesson (IELTS Combination)

Timetables are samples and may be subject to change.

#### Fees per week

Bournemouth, Brighton, Edinburgh, Cambridge, Oxford London*				
No of weeks	2-3	4-7	8-11	12-52
IELTS	£412	£382	£352	£327
IELTS Combination	£808	£778	£748	£723

\*London: please add the following supplements:

IELTS add £25 per week.

IELTS Combination add £49 per week.

Exam fee is £180. SELT (IELTS Life Skills) fee is £250.

**IELTS:** 25 hours of English and exam skills per week, plus one coaching session per week.

**IELTS Combination:** 25 hours of English and exam skills per week + 5 hours 1:1 per week.

#### Course dates and entry level

Courses start every Monday throughout the year.

Students should arrive on the Sunday.

Entry level: Intermediate

## Cambridge Exam Preparation

Preparing for a Cambridge certificate helps you to master the skills you need to use English in the real world. The exams are based on real life situations where you need to use your English skills.

See page 31 for a description of each Cambridge exam.

#### Our course helps you to:

- be confident in handling all aspects of the exam
- be able to express yourself fluently
- gain an expanded range of vocabulary
- be able to use grammar and syntax effectively
- overcome anxiety through intensive exam practice

#### Cambridge Exam Preparation Courses

Start any Monday within the course dates below:

Course dates 2016 / 2017	Exam dates	OXF	CAM	LON	BRI	EDI
<b>FCE</b>						
26.12 – 03.03	04.03	✓	✓	✓		
30.01 – 10.03	10.03					✓
27.03 – 02.06	03.06	✓				
03.04 – 09.06	06.06		✓			
24.04 – 02.06	06.06					✓
17.04 – 23.06	24.06			✓		
03.07 – 25.08	27.07/ 24.08	✓	✓	✓	✓	✓
02.10 – 08.12	09.12	✓	✓	✓		
16.10 – 24.11	28.11					✓
<b>CAE</b>						
02.01 – 10.03	11.03	✓	✓	✓		
16.01 – 24.02	01.03					✓
27.03 – 02.06	03.06	✓				
03.04 – 09.06	07.06		✓			
24.04 – 02.06	07.06					✓
17.04 – 23.06	24.06			✓		
26.06 – 25.08	20.07/ 25.08	✓	✓	✓	✓	✓
25.09 – 01.12	02.12	✓	✓	✓		
16.10 – 24.11	29.11					✓
<b>CPE</b>						
02.01 – 10.03	11.03	✓				
03.04 – 09.06	08.06	✓				
25.09 – 01.12	02.12	✓				

Key: Oxford (OXF), London (LON), Cambridge (CAM), Brighton (BRI), Edinburgh (EDI).

- Students taking the exam at the end of their course may need to book additional nights of accommodation for the week when the exams take place.



Entry level	eg 10 week	eg 3 week
FCE	Intermediate	Upper Intermediate
CAE	Upper Intermediate	Advanced
CPE	Advanced	Very advanced

#### Fees per week – Cambridge Exam Preparation

25 hours of English language skills including 5 hours of exam skills training and 5 hours of accuracy in examination grammar per week, plus one coaching session per week.

	Brighton, Edinburgh Cambridge, Oxford	London
2-3 weeks	£412 per week	£437 per week
4-7 weeks	£382 per week	£407 per week
8-10 weeks	£352 per week	£377 per week

Examination fees: FCE, CAE or CPE - £180.

## TOEFL Exam Preparation

Prepare for the TOEFL exam in Brighton on our 3 week course. TOEFL is accepted by many institutions around the world for university entrance.

#### Brighton – 3 week TOEFL course

Fees per course	£1,236
Course dates	06.08 – 26.08
TOEFL exam date	25.08

TOEFL: 25 lessons of English language skills and exam preparation skills per week, plus one coaching session per week. Each lesson is 60 minutes. Exam fee is £190





## Mini Group Courses

- Accelerated learning for professionals and the ambitious
- Gain the tools and skills to further your career
- Become a relaxed and confident global communicator

### English World ClasSIX

ClasSIX is an accelerated learning programme suitable for professionals and any ambitious learner. There is a maximum of six participants in the morning and in the afternoon you join either groups of 12 or have one-to-one sessions. The combination programme replaces the afternoon session with one-to-one coaching.

Your goals are to:

- gain the confidence to communicate fluently
- participate on equal terms in meetings, negotiations and presentations
- develop accuracy in grammar, idioms and vocabulary
- analyse information from written documents
- write reports, emails, letters and presentations
- participate effectively on the telephone or via video conferencing

### How we help you

Our unique course gives you the tools, skills practice and feedback required for you to rapidly develop your fluency, accuracy and performance in a second language so that you feel at home communicating in English. The small group size gives each client a high level of trainer interaction.

### The ClasSIX Programme

#### Task knowledge

You gain the tools to undertake a range of life and business tasks in a second language through case-studies, exercises and vocabulary extension. Skills developed include the language of meetings and negotiations, influencing and persuading, reaching a compromise, being assertive and utilising critical thinking and problem solving skills.

#### Active scenario

You activate your language and skills in a dynamic scenario which uses the task knowledge above. You develop through analysis and feedback on your performance.

#### Knowledge for the professional community

Development of the important interpersonal and intercultural soft skills such as managing, leading and project management.

#### Language focus

This session builds skills in telephoning, business writing (email, reports, etc) and socialising.

#### Confident spoken performance

In this fluency session you develop your confidence and skills through mini role-plays, presentations and public speaking activities. With a focus on rapport building, voice quality, body language, posture and eye contact, the aim is for confident performance in a second language.

### English World ClasSIX

#### Sample Timetable - ClasSIX

08.45 - 09.00	Plenary
09.00 - 10.00	Task knowledge
10.00 - 10.15	Break
10.15 - 11.15	Active scenario
11.15 - 11.30	Break
11.30 - 12.30	Knowledge for the professional community
12.30 - 13.30	Lunch
13.30 - 14.30	Language focus
14.30 - 14.45	Break
14.45 - 15.45	Confident spoken performance

Timetables are samples and may be subject to change.

### English World ClasSIX Combination

ClasSIX Combination is designed for clients wishing to gain the benefits of group and individual tuition. The course comprises 15 hours of small group tuition with 10 hours (ClasSIX 10) or 15 hours (ClasSIX 15) of one-to-one per week in the afternoon to focus on highly specific needs.

### ClasSIX fees per week

Oxford, Cambridge, London*					
No of weeks	1	2-3	4-7	8-11	12-52
ClasSIX	£680	£590	£560	£530	£505
ClasSIX 10	£1,314	£1,224	£1,194	£1,164	£1,139
ClasSIX 15	£1,710	£1,620	£1,590	£1,560	£1,535

\*London: please add the following supplements:

ClasSIX add £36 per week.

ClasSIX 10 add £74 per week.

ClasSIX 15 add £98 per week.

**ClasSIX 10:** 15 ClasSIX lessons per week (max 6 per class) + 10 1:1 lessons per week. Each lesson is 60 minutes.

**ClasSIX 15:** 15 ClasSIX lessons per week (max 6 per class) + 15 1:1 lessons per week. Each lesson is 60 minutes.

### Dates and entry level

All ClasSIX courses start every Monday throughout the year. Students should arrive on the Sunday. Suitable from lower intermediate to advanced.

### BULATS test

A BULATS test can be taken at the end of any course to demonstrate your progress. Fee £38.

### Legal English ClasSIX

Develop your knowledge of English for law. The course follows the structure of the ClasSIX course using legal case studies for the active scenario, and vocabulary in the task knowledge includes civil law (including contract law), EC law and criminal law. The knowledge for the professional community session builds interpersonal and intercultural soft skills. The course includes visits to courts in London. The Test of Legal English Skills can be taken if required.

### 2017 course dates and fees

**London - 2 week course: £1,252**

09-22 July; 13-26 Aug

TOLES exam date: 24 Aug

**Legal English ClasSIX:** 25 hours a week (15 hours of Legal English in a group of max 6 per class + 10 hours English skills in a group of max 12 per class). Each lesson is 60 minutes. Test of Legal English Skills (TOLES) can be taken on dates above. Exam fee £103.

### English for Leadership

This high level course is designed to enhance communicative skills, provide strategies for how to influence and empower others, and to develop a compelling vision lived by those around you. Case studies, and authentic situations are used to contextualise what is learnt. Participants are challenged to problem-solve a variety of common communication scenarios, including how to manage change, how to mediate effectively and how to establish a professional culture.

### 2017 course dates, fees and entry level

**Oxford - 2 week course: £1,180**

06-19 Aug; 20 Aug-02 Sept

**English for Leadership:** 25 hours a week (15 hours of Communication in leadership situations in a group of max 6 per class + 10 hours English skills in a group of max 12 per class). Each lesson is 60 minutes.

Entry level: Upper Intermediate.





## Home Tuition – Live with your teacher

- Study one-to-one in the teacher's home for effective progress
- Tailor made courses for children, teenagers or adults
- Total immersion – learning from morning to night for increased fluency
- Study for professional, academic or cultural purposes

### Live and learn in the home of your teacher

Home Tuition is a unique programme combining intensive language training and living in the home of your personal tutor. It is a highly intensive total immersion course for all ages in which your language skills develop quickly and naturally. In one-to-one lessons you work on the specific goals you have, e.g. to pass an exam or make a work presentation. Outside lessons there are many opportunities to practise and refine your English – over breakfast, lunch and dinner, during tea and coffee breaks, and when doing activities with your teacher or their family and friends. A Young Home Tuition course includes 24 hour supervision by the teacher or the teacher's family and three special visits to local places of interest each week.

### Locations

All our Home Tuition teachers are located within one hour's travelling time of Regent schools in Brighton, Bournemouth, Cambridge, Edinburgh, London and Oxford. Let us know your requirements and our head office team will propose a suitable homestay which matches your needs.

### Supported Learning

Each Regent school has a Home Tuition Director of Studies. It is their role to liaise with you and your teacher on a regular basis. An initial meeting at the school is arranged for you to discuss your requirements from the course. The Director of Studies will introduce adult students to the school, the cultural programme and school facilities such as the learning lounge which you may use at any time.

Fees per week Home Tuition	Home Tuition	Young Home Tuition (age 7-17)
<b>25 one-to-one hours</b>		
1 week	£2,310	£2,485
2-3 weeks	£2,220	£2,395
4-7 weeks	£2,190	£2,365
• London: please add supplement of £195 to fees above		
<b>20 one-to-one hours</b>		
1 week	£1,914	£2,089
2-3 weeks	£1,824	£1,999
4-7 weeks	£1,794	£1,969
• London: please add supplement of £171 to fees above		
<b>15 one-to-one hours</b>		
1 week	£1,518	£1,693
2-3 weeks	£1,428	£1,603
4-7 weeks	£1,398	£1,573
• London: please add supplement of £147 to fees above		

## Individual Tuition

- One-to-one lessons for more personal progress
- Lesson content is an exact match to your requirements
- Accelerated progress for all ages

### Individual Tuition

Take our individual courses to make the fastest possible progress. Individual programmes of 30, 25, 20 and 15 hours per week are available for clients requiring the most intensive programmes.

### Tailor-made for maximum progress

One-to-one lessons offer students a programme which is designed precisely to their own unique requirements. In this way, you make the maximum possible progress because your teacher is able to focus on your needs and your personal learning style in every lesson.

Teachers set self-study exercises and give direction and guidance for students to maximise their consolidation time between lessons.

### English for Specific Purposes

Individual tuition programmes are ideal for those who need to improve their English language skills for specific purposes. Teachers are chosen for their experience in or background knowledge of the subject areas.

### Dates and Entry Level

Courses start every Monday throughout the year with arrival on the Sunday. Suitable for beginner to advanced.

Fees per week Individual Tuition	Bournemouth Brighton, Edinburgh Cambridge, Oxford	London
<b>Individual 30 30 hours 1:1 per week</b>		
Compact 1 week course	£2,466	£2,610
2-3 weeks	£2,376	£2,520
4-7 weeks	£2,346	£2,490
8-11 weeks	£2,316	£2,460
<b>Individual 25 25 hours 1:1 per week</b>		
Compact 1 week course	£2,070	£2,190
2-3 weeks	£1,980	£2,100
4-7 weeks	£1,950	£2,070
8-11 weeks	£1,920	£2,040
<b>Individual 20 20 hours 1:1 per week</b>		
Compact 1 week course	£1,674	£1,770
2-3 weeks	£1,584	£1,680
4-7 weeks	£1,554	£1,650
8-11 weeks	£1,524	£1,620
<b>Individual 15 15 hours 1:1 per week</b>		
Compact 1 week course	£1,278	£1,350
2-3 weeks	£1,188	£1,260
4-7 weeks	£1,158	£1,230
8-11 weeks	£1,128	£1,200

### Dates and Entry Level

Course dates: arrive any Sunday during the year, departure is the Saturday. Suitable for beginner to advanced.

### En-suite Accommodation

En-suite accommodation supplement per week: £120.

### Taxi transfers – one way

	London Heathrow	London Gatwick	Stansted	Edinburgh
Bournemouth	£151	£172	-	-
Brighton	£182	£98	-	-
Cambridge	£161	£172	£82	-
Edinburgh	-	-	-	£55
London	£103	£113	£124	-
Oxford	£145	£187	-	-



### Regent Home Tuition

38 Binsey Lane Oxford OX2 0EY Tel: +44 (0)1865 258 343 Email: hometuition@regent.org.uk



## Summer Camps for Children and Teenagers

- Dynamic immersion courses: Senior (age 13-17); Junior (age 7-12)
- Stunning residential Stowe school
- Lively seaside homestay course in Bournemouth

### All Day – All Course – All English

Our All English course for children and teenagers is an action-packed immersion course with a choice of residential accommodation at Stowe School, or living with local people (homestay) in Bournemouth. From morning to evening students are immersed in a stimulating educational environment.

The intensive day includes 27 hours of structured learning activities including 15 hours of English tuition, 6 hours of performance projects and 6 hours of sports or activities geared to students' interests. As well as a focus on language skills and structure the Senior students (age 13-17) have a unique interest based learning session selected from Sports and Health, Music and Performing Arts, Art and Design or Science and Technology. A homework session is followed by evening activities, with 3 evenings a week in Bournemouth spent with the homestay hosts.

**What's included:** Full board accommodation, tuition and activity programme, 1 full day and 1 half day excursion per week. Transfers from Heathrow, Gatwick, Southampton or Bournemouth between 9am-6pm on our Sunday start dates, with return flights on Saturday between 12-7pm.

### Exam Preparation

We also offer preparation for the IELTS, Cambridge: First (FCE) and Cambridge: Advanced (CAE) exams. FCE and CAE students can take the exam on site.

### Leadership and teamwork

We go beyond just language learning and help students to develop skills of team working and leadership, decision making and in presenting. We place each student in an international team, which encourages a sense of belonging and creates a safe and welcoming environment. Students win Regent Lion points for their team for exemplary behaviour and successful activities, creating competition, a positive course dynamic and boosting their confidence to join in, express themselves and present confidently.

English classes are held in small groups of no more than 12. Teachers set homework every day and students create a Personal Portfolio to record learning and achievements. As the course progresses, students often feel more confident as we help them build their identity as an English language speaker.

#### Typical timetable

08.00	Breakfast
09.00 - 09.30	Morning meeting
09.30 - 10.30	Language structure
10.45 - 11.45	Language skills
12.00 - 13.00	Interest based learning
13.00 - 14.00	Lunch
14.00 - 15.30	Performance project
16.00 - 17.30	Active session
18.00 - 19.00	Dinner
19.00 - 20.00	Homework
20.30 - 22.00	Evening activity
22.30	Bedtime

This is a typical timetable and may be subject to change.

## Regent at Stowe School – Residential

- For ages 7-12, 13-17
- Impressive architecture & grounds
- Excellent sports facilities

### The Residential Programme

The impressive Stowe School is one of England's most prestigious boarding schools and is set in 750 acres of outstanding parkland. We use the exceptional sporting and leisure facilities to include rugby, football, music, basketball and use of the swimming pool.

Stowe is 6km from the town of Buckingham, and 45 minutes from Oxford. We run excursions to exciting and culturally significant destinations including Oxford, London and Stratford upon Avon.



#### Regent at Stowe – Course fees All English – Senior, Junior, Exam

2 weeks	09.07-22.07 23.07-05.08 30.07-12.08	£2,430
3 weeks	09.07-29.07 23.07-12.08	£3,600
4 weeks	09.07-05.08	£4,760
5 weeks	09.07-12.08	£5,925

**Exams offered:** FCE, CAE, IELTS.  
FCE exam: 27/07; CAE exam: 20/07  
Cambridge exam fee £180 not included.



## Regent in Bournemouth – Homestay

- For ages 13-17
- Close to sandy beaches
- Use English with local people

### The Homestay Programme

Students live with homestay hosts in the quiet Southbourne area of Bournemouth which provides an ideal opportunity to practise English outside the classroom. All meals are provided by our hosts including a packed lunch on school and excursion days.

Bournemouth offers a range of attractions including great beaches, shopping and museums. We offer a range of sporting and social activities including beach sports, fashion shows, quiz night, badminton and dance workshops.

Excursions to local towns and cities including Winchester and Christchurch and also to larger destinations including Bath and London.



#### Regent in Bournemouth – Fees per week All English – Senior, Exam

Start any Sunday between 02.07 - 20.08	
2 weeks	£930 per week
3 weeks	£915 per week
4 weeks	£905 per week
5 weeks +	£900 per week

**Exams offered:** FCE, CAE, IELTS.  
FCE exam: 27/07, 24.08; CAE exam: 20/07, 25/08  
Cambridge exam fee £180 not included.

#### Regent Summer Schools

38 Binsey Lane Oxford OX2 0EY Tel: +44 (0)1865 258 316 Email: summerschools@regent.org.uk





# Regent Scanbrit in Bournemouth

- Location close to the beach in a quiet area of Bournemouth
- Focused atmosphere, ideal for serious study
- Enjoy Bournemouth's excellent recreation and sporting facilities
- Separate teenager course for 13-17s in the summer

### Ideal for focused study

We are in a quiet area of town making us an ideal place for relaxed, focused study. Our homestays are conveniently located close to the school. Bournemouth's town centre is within easy reach with its vibrant nightlife and excellent theatres and restaurants. Nearby are great places to visit including the New Forest, and the famous Jurassic Coast. London is only 95 minutes by train.

We have two school buildings, Church Road (pictured) and Wollaston Road where we usually run our teenagers' courses. Parents can study an adult

course while the children take a junior programme. The Church Road school has a student lounge with wide screen TV, free internet access, and outside we have a garden used for barbecues in the summer.

### Personal attention

We are very proud of our friendliness, our warmth of welcome, and the high levels of personal attention and support you can expect when you are with us. We are committed not only to helping you make progress with your studies, but also to enjoy a social and cultural experience in the UK.

### Fact file

Courses	English World 33; English World 22; IELTS Preparation; Individual Tuition; Home Tuition; All English – Senior/Exam; Parent and Child
Minimum age	16 (Residential accommodation available for students aged 18 and over) 13-17 on All English – Senior/Exam
Facilities	Wifi / internet access, computer centre, student lounge, garden
Open all year	Except 25 Dec, 26 Dec, 1 Jan
Location	300 metres from the beach, 5 km from Bournemouth city centre
What's included	All tuition, Regent file, Certificate of Achievement

### Accommodation fees per week

Option	Single room	Extra night
Homestay – Bed, breakfast and evening meal	£177	£29
Ensuite Homestay – Bed, breakfast and evening meal	£297	£49
Summer Residence (room only, min. age 18)	£220	£37

• Arrival day is Sunday, departure day is Saturday

### Transfers

Bournemouth is well served by bus and train connections from the UK's airports. Tickets are purchased by the student at the time of travel. Alternatively, we offer a personal taxi service on arrival and departure. The taxi reservation is made by the school and charged on the course invoice.

	Airport bus	Train	Taxi (one way)
Gatwick	£43 (National Express)	£43	£172
Heathrow	£32 (National Express)	£43	£151
Southampton			£87
Bournemouth			£45

Bus and train fares are approximate

# Regent Brighton

- Dynamic university city popular with students
- Located in an elegant building a short walk from the sea
- Ideal for learners who wish to study hard in a creative and vibrant city
- Enjoy Brighton's buzzing cosmopolitan atmosphere

## An exciting university city

Brighton is an exciting city by the sea with more hours of sunshine than almost anywhere else in the UK. It is close to beautiful countryside and only 50 minutes from London. There are two universities and the city is famous for its social life and entertainment. There's always lots to do in Brighton, making it a very attractive place to study.

The school occupies an elegant building in a leafy residential area within easy reach of the city centre

and the seafront. There is free wireless internet access and our student lounge where you can relax and talk with friends is open throughout the day. Your teachers help organise your after-school activities programme, so you get to know them socially.

## The student experience

Regent Brighton was established in 1978 and has a long history of helping students to achieve their goals in a warm, welcoming environment.

### Fact file

Courses	English World 33; English World 22; IELTS Preparation; Cambridge Exam Preparation; TOEFL; Individual Tuition; Home Tuition
Minimum age	16
Facilities	Wifi / internet access, student learning lounge, patio garden
Open all year	Except 25 Dec, 26 Dec, 1 Jan
Location	South coast - London 80km
What's included	All tuition, Regent file, Certificate of Achievement

### Accommodation fees per week

Option	Single room	Extra night
Homestay – Bed, breakfast and evening meal	£177	£29
Ensuite Homestay – Bed, breakfast and evening meal	£297	£49

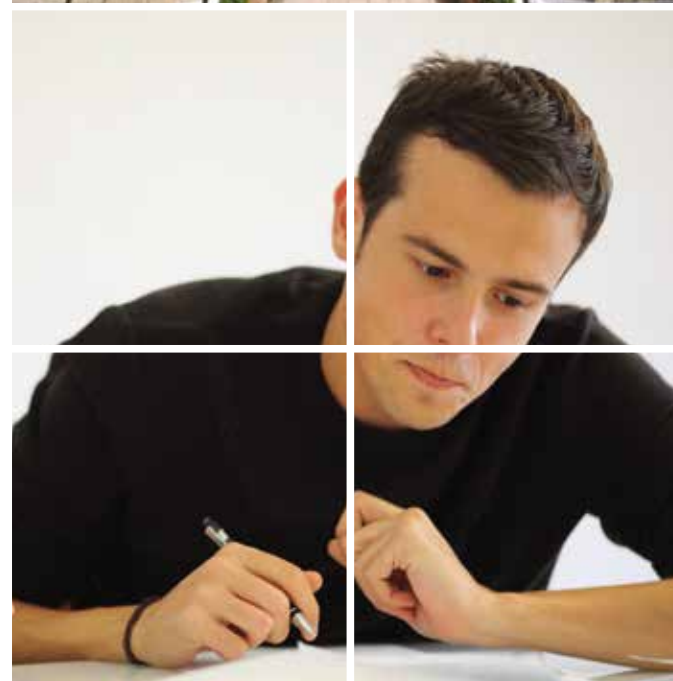
• Arrival day is Sunday, departure day is Saturday

### Transfers

Brighton is well served by bus and train connections from the UK's airports. Tickets are purchased by the student at the time of travel. Alternatively, we offer a personal taxi service on arrival and departure. The taxi reservation is made by the school and charged on the course invoice.

	Airport bus	Train	Taxi (one way)
Gatwick	£11 (National Express)	£10	£98
Heathrow	£32 (National Express)	£53	£182

Bus and train fares are approximate





King's College Cambridge



# Regent Cambridge

- Study in a world famous educational centre
- Purpose built educational environment in city centre
- Ideal for serious study in an academic setting
- Enjoy Cambridge's sophisticated architecture, arts and culture

## A unique university atmosphere

One of the most famous cities for learning in the world, Cambridge is beautiful, historic and home to Cambridge University. You can visit colleges and museums, learn how to punt on the River Cam, or just relax and have fun in the city's many restaurants and bars. There is lively nightlife, and entertainment for everyone.

liveliest and most cosmopolitan areas of central Cambridge, our school has excellent facilities including a language learning lounge and large patio garden.

As well as being accredited by the British Council for the teaching of English, Regent Cambridge is also accredited by the Independent Schools Inspectorate and is a UKVI Tier 4 sponsor.

We specialise in IELTS programmes that prepare students for university. In the middle of one of the



## Fact file

Courses	English World 33; English World 22; IELTS Preparation; Cambridge Exam Preparation; English World ClasSIX; Individual Tuition; Home Tuition
Minimum age	16 (Residential accommodation available for students aged 18 and over)
Facilities	Wifi / internet access, student learning lounge, garden
Open all year	Except 25 Dec, 26 Dec, 1 Jan
Location	London 80 km
What's included	All tuition, Regent file, Certificate of Achievement

## Accommodation fees per week

Option	Single room	Extra night
Homestay – Bed, breakfast and evening meal	£195	£33
Ensuite Homestay – Bed, breakfast and evening meal	£315	£53
Residence (summer only, min. age 18) Bed, breakfast	£357	£59

• Arrival day is Sunday, departure day is Saturday

## Transfers

Cambridge is well served by bus and train connections from the UK's airports. Tickets are purchased by the student at the time of travel. Alternatively, we offer a personal taxi service on arrival and departure. The taxi reservation is made by the school and charged on the course invoice.

	Airport bus	Train	Taxi (one way)
Gatwick	£37 (National Express)	£32	£172
Heathrow	£32 (National Express)	£43	£161
Stansted	£12 (National Express)	£12	£82
Luton	£22 (National Express)	£37	£98

Bus and train fares are approximate

# Regent Edinburgh

- Scotland's vibrant and cosmopolitan capital
- Impressive school building in the heart of Edinburgh
- Ideal for serious study in an historic and cultural capital
- Enjoy Edinburgh's warm, friendly and welcoming atmosphere

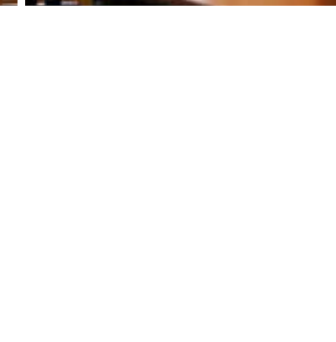
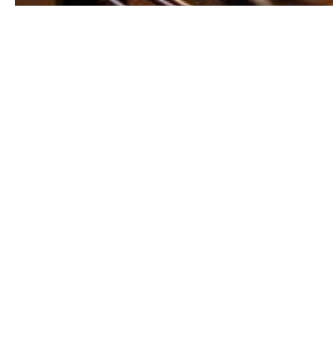
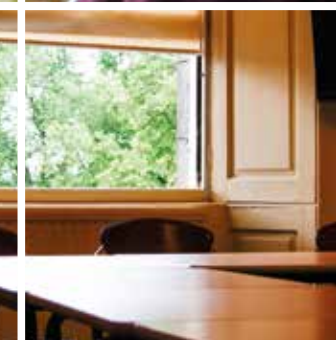
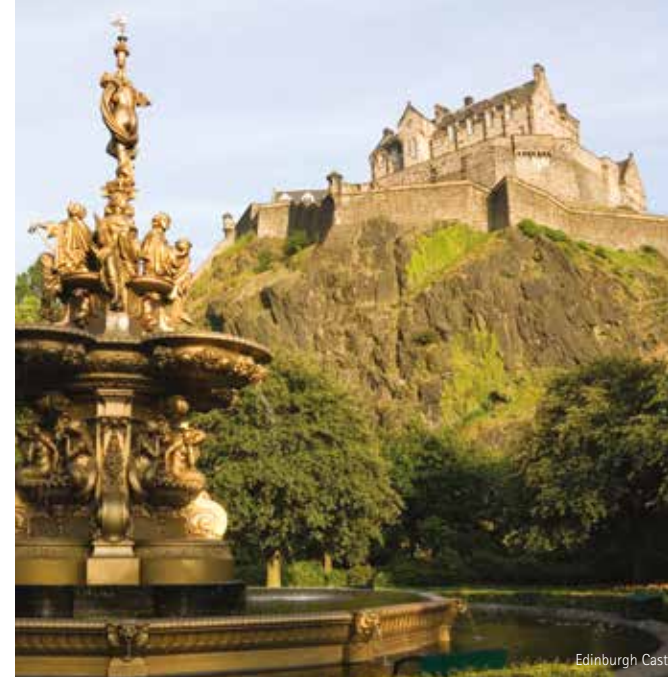
## A cultural experience in Scotland's capital

Edinburgh is an exciting, cosmopolitan city offering many attractions to visitors including a great many museums, galleries and buildings of historical and architectural interest. As a university city, it caters for students and offers a fantastic social life. Edinburgh is also the home of the August Edinburgh Festival and New Year street party which are both visited by thousands of people every year. Places of interest include Edinburgh Castle and the Scottish Parliament. The spectacular Highlands are within easy reach of the city.

The school is located in a beautiful Georgian building in the city centre, a short walk from the famous Princes Street, Edinburgh Castle and the Botanic Gardens. The facilities include free internet access and Wifi. There is a student study centre and student common room with TV and drinks facilities.

## Our student community

As a smaller school, we are able to help students accomplish their goals in a highly supportive environment. We pride ourselves on offering a relevant and enriching experience.



## Fact file

Courses	English World 33; English World 22; IELTS Preparation; Cambridge Exam Preparation; Individual Tuition; Home Tuition; Arts, Literature and Culture
Minimum age	16 (Residential accommodation available for students aged 18 and over)
Facilities	Wifi / internet access, student study centre, student lounge
Open all year	Except 25 Dec, 26 Dec, 1 Jan
Location	City centre
What's included	All tuition, Regent file, Certificate of Achievement

## Accommodation fees per week

Option	Single room	Extra night
Homestay – Bed, breakfast and evening meal	£195	£33
Ensuite Homestay – Bed, breakfast and evening meal	£315	£53
Summer Residence (summer only, min. age 18) Self-catering	£250	£42

• Arrival day is Sunday, departure day is Saturday

## Transfers

Edinburgh is well served by bus and train connections from the UK's airports. Tickets are purchased by the student at the time of travel. Alternatively, we offer a personal taxi service on arrival and departure. The taxi reservation is made by the school and charged on the course invoice.

	Airport bus	Taxi (one way)
Edinburgh	£6 (Edinburgh Airlink)	£55

Bus and train fares are approximate



# Regent London

- One of the world's great capital cities
- Magnificent school in the heart of London
- Ideal for motivated, serious learners
- Enjoy the capital's many attractions and dynamic social life

## Study in the heart of the capital

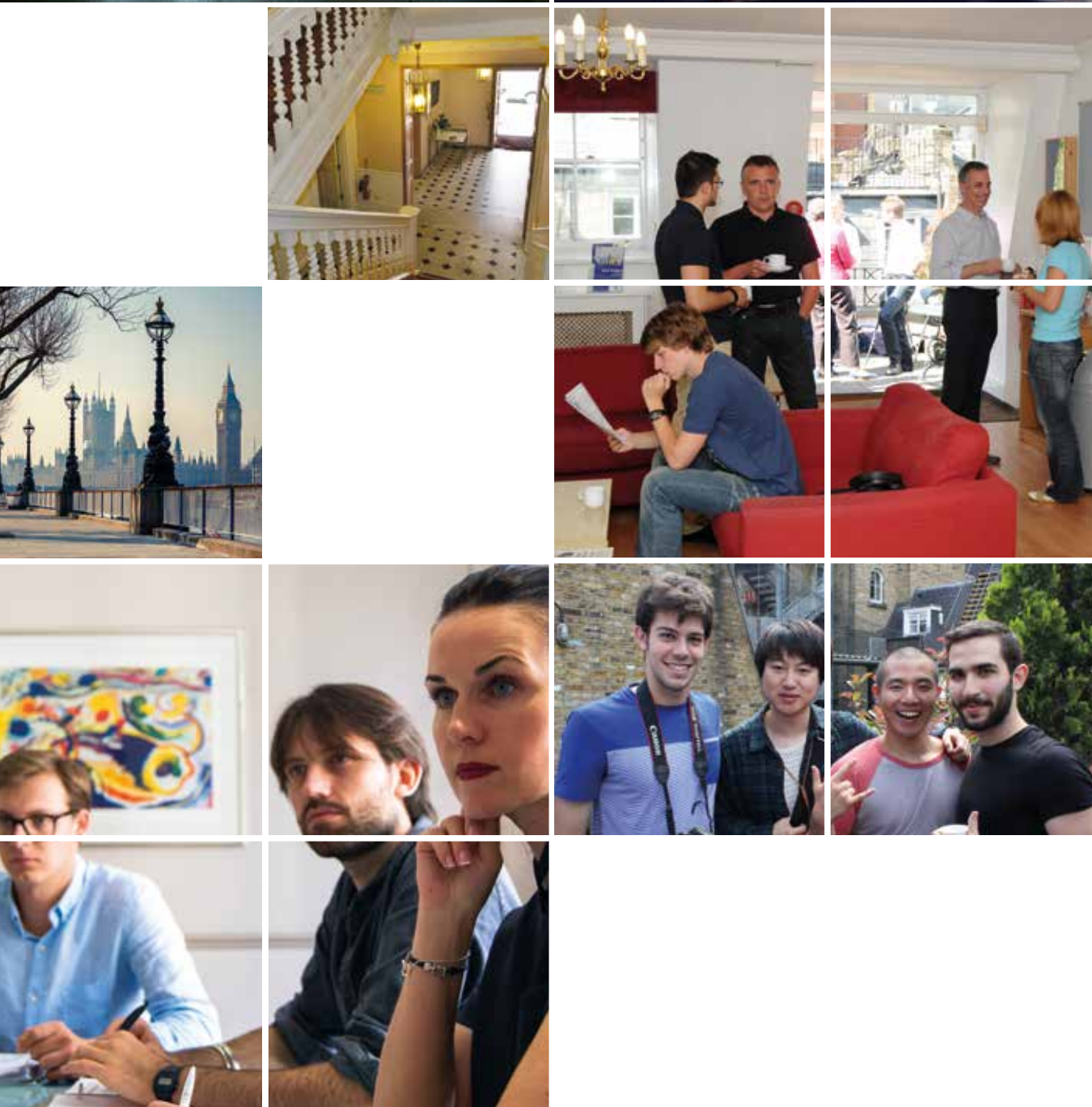
Our prestigious school is in the heart of London. Trafalgar Square, Covent Garden, Leicester Square and London Theatreland are just moments away. Our staff can advise you how best to use your time - perhaps visiting the National Gallery, or going on a boat trip on the Thames, or seeing a top London show? In London there really is something for everyone.

Established in 1964, Regent London was the first Regent school. We have over 50 years' experience of teaching English so you can be sure of reaching your academic goals with us.

Our 300 year old school building is part of London's history - it belonged to the famous diarist, Samuel Pepys. It is next to Embankment Gardens and the River Thames - a quiet oasis of learning in the heart of busy London.

## Rewarding experience

The school offers an extremely comfortable learning environment. Our school team is dedicated to giving you a rewarding learning experience and enjoyable stay. As our school is truly multinational, it's easy to practise your English and mix with people and cultures from around the world.



## Fact file

Courses	English World 33; English World 22; IELTS Preparation; Cambridge Exam Preparation; English World ClasSIX; Legal English ClasSIX; Individual Tuition; Home Tuition
Minimum age	16 (Residential accommodation available for students aged 18 and over)
Facilities	Wifi / internet access, student lounge, language learning centre
Open all year	Except 25 Dec, 26 Dec, 1 Jan
Location	Central London
What's included	All tuition, Regent file, Certificate of Achievement

## Accommodation fees per week

Option	Single room	Extra night
Homestay - Bed, breakfast and evening meal	£250	£42
Ensuite Homestay - Bed, breakfast and evening meal	£370	£62
Centrally located residences - offering ensuite studios	from £380	

• Arrival day is Sunday, departure day is Saturday

## Transfers

London is well served by bus and train connections from the UK's airports. Tickets are purchased by the student at the time of travel. Alternatively, we offer a personal taxi service on arrival and departure. The taxi reservation is made by the school and charged on the course invoice.

	Airport bus	Train	Taxi (one way)
Gatwick	£12 (National Express)	£22	£113
Heathrow	£12 (National Express)	£22	£103
Stansted	£12 (Easybus)	£27	£124
London City	£12 (National Express)	£7 (Underground)	£108
St Pancras	£7 (London bus services)	£7 (Underground)	£72

Bus and train fares are approximate



# Regent Oxford

- World famous university city
- Impressive school with large garden
- Ideal for serious, driven learners
- Enjoy Oxford's elite academic atmosphere

## Experience a city rich in history

Oxford is world famous for its university, and it has a huge amount to offer its visitors. There are lots of cultural events, a lively social scene, beautiful buildings and a variety of international restaurants. The city is steeped in history and the air of academic excellence is reflected in our school's culture. Students often comment that the unique atmosphere of the school is both professional and personal.

The school is situated in an impressive Victorian building surrounded by a picturesque, typically English garden very near to the centre of Oxford.

Students use our library, student lounge, conservatory, computer centre with computers and free wifi and our generous catering service. We offer an exciting cultural programme with plenty of academic, social and cultural events as well as weekend excursions.

## Learning experience

Regent Oxford is a centre of academic excellence for which we have been renowned locally and internationally since we were established in 1953. Our goal is to provide you with a learning experience that has an immediate impact and a lasting effect on your life.

## Fact file

Courses	English World 33; English World 22; IELTS Preparation; Cambridge Exam Preparation; English World ClasSIX; English for Leadership; Arts, Literature and Culture; Individual Tuition; Home Tuition
Minimum age	16 (Residential accommodation available for students aged 18 and over)
Facilities	Wifi / internet access, computer suite, garden and conservatory, library, student lounge
Open all year	Except 25 Dec, 26 Dec, 1 Jan
Location	Oxford city centre 1.5 km, London 80 km
What's included	All tuition, Regent file, Certificate of Achievement

## Accommodation fees per week

Option	Single room	Extra night
Homestay – Bed, breakfast and evening meal	£195	£33
Ensuite Homestay – Bed, breakfast and evening meal	£315	£53
Residence – Standard room (min. age 18)	£379	£63
Ensuite room (min. age 18)	£432	£72
Private Apartments	from £600	

• Arrival day is Sunday, departure day is Saturday

## Transfers

Oxford is well served by bus and train connections from the UK's airports. Tickets are purchased by the student at the time of travel. Alternatively, we offer a personal taxi service on arrival and departure. The taxi reservation is made by the school and charged on the course invoice.

	Airport bus	Train	Taxi (one way)
Gatwick	£32 (Airline bus)	£43	£187
Heathrow	£22 (Airline bus)	£43	£145
Luton	£22 (National Express)	£43	£177

Bus and train fares are approximate

# Terms and Conditions

## How to book a course

To secure a place on a Regent course, please return the Enrolment Form together with payment of a non-refundable deposit or book online at [www.regent.org.uk](http://www.regent.org.uk).

## Payment of fees

On receipt of the application and deposit a letter of confirmation is sent with a Statement of Fees which should be settled at least 4 weeks before the course starting date. In the case of registration less than 6 weeks before the course starting date, the full amount of the cost of the course must be sent with the Registration Form. PLEASE NOTE: students will not be allowed to start their course unless FULL PAYMENT has been received by the School. All bank charges must be paid by the student. PLEASE NOTE: if you require a visa the school will provide the visa letter or Certificate of Acceptance of Studies (CAS) only when full payment has been received by the school. All bank charges must be paid by the student. In the event of an unsuccessful application all fees will be returned in full, less the cost of the CAS.

## Accommodation address

Students who have requested the School to book host family accommodation on behalf of the student will receive details of their host family address at least 5 days before the course starting date, unless they enrol late. This enables those students travelling independently to let the host family know of their approximate time of arrival.

## Conditions for cancelling or changing a course by the Student

- If the School receives the cancellation before the course starting date, the School will retain the deposit.
- After the course has started, a student must give 10 days' written notice to the Principal of changes to or cancellation of a course. A cancellation fee equivalent to 1 week's course fees will be charged. Refunds cannot be made for non-attendance, absence due to illness or any other cause.
- If a student wishes to be absent from the course for 1 or 2 weeks for the purposes of taking a holiday he/she must give the Principal at least 2 weeks' notice in writing.
- Students who choose to exchange their original choice of course for one of greater value must pay the difference between the two at the time of requesting the upgrade.
- Any refund due when a course is changed or cancelled, or a holiday taken, will be paid to the person who paid for the student's course at his/her home address at the end of the course. 'End of the course' here is defined as the last date of the course specified on the booking form (i.e. if a student books a 12 week course and decides to leave after 4 weeks he/she will not be refunded until 12 weeks after the start of the course).
- If a student is denied a student visa or a study permit and provides the School with a copy of the rejection letter on or before the first day of classes, the School will refund the course fee.

## Change or Cancellation of a course by the School

Sometimes it is agreed between the School and a student that it would be beneficial for the student to be moved to another School course. When this happens only a course of at least equivalent cost will be offered by the School.

The School reserves the right to cancel a course, or make changes to course arrangements, without liability, if forced to do so for reasons beyond its control. If this happened, the School would seek to offer alternative arrangements, dates or venues.

If the School cancelled a course booked and paid for by a student in accordance with these terms other than for reasons beyond its control, and did not offer an alternative acceptable to the student, the School would pay compensation as follows:

- Where the cancellation is before the start of the course, compensation equal to the deposit paid by the student or
- Where the cancellation is after the start of the course, compensation equal to one week's fees.

## Conduct

We expect students to behave reasonably at all times towards other students, school staff and accommodation providers and to respect cultural, racial and religious differences.

If we have to ask you to leave the school because your behaviour is unacceptable, you will not be entitled to any refund of fees.

Unacceptable behaviour includes unsatisfactory attendance or work, aggressive physical or verbal behaviour towards other students or members of staff, drug abuse, dishonesty, criminal behaviour or deliberately causing damage to the school premises or accommodation.

The school expects all students to adhere to the standards and rules we set.

If we deem your behaviour unacceptable or have asked you to leave the school you will not be allowed to remain in accommodation we have arranged.

## Liability and Insurance

Students should make sure that they organise their own travel insurance to cover medical costs and repatriation costs in the case of an illness or accident.

The School acts only as an intermediary between its students and travel organisations and between students and host families. Unless and to the extent caused by the School's negligence, the School cannot be held responsible for any delay or accident during a journey nor for any incident which may happen during the student's stay with the host family. The School will, however, endeavour to defend the student's interests in the event of breach of contract on the part of the travel organisation or the host family.

The School reserves the right not to allow on the course a student suffering from any illness, medical condition, or mental or physical disability which has not been disclosed on the Registration Form.

This brochure, issued by the School, gives the only terms and information that can be referred to in the event of a disagreement between the student and the School. These terms and conditions are governed by English law and do not affect your statutory rights under English law.

## Personal Information and Photographs

We use the personal information that you give us, including information about your health and religious or dietary requirements, to perform our contract with you. We may also use it to ensure that we comply with UK law, for internal training, or to send you further information about our courses and services. We do not share your details with third parties other than as necessary to perform our contract with you. The information you give us is kept securely on our computer system, and is accessible by the schools and offices in the group of companies to which the School belongs, including those outside the European Union. If you do not want to receive further information from us, please write to us at the address below. Please contact us if you want to see a copy of the information we hold, or have questions about our use of your information.

The School reserves the right to use photographs taken during courses to illustrate its promotional material. If a student wishes that his or her photo should not appear in this material, they should advise the School during the photo-shoot. These photos have no commercial or contractual value.

## Definition of the school and the course

In these terms "the School" means the Regent School where you book your course.

"The course" means all the elements you book (eg. tuition, accommodation, transfers etc.)

The school is closed on 25 Dec, 26 Dec and 1 Jan

In the UK, Regent courses are operated by Instill Education Limited, a company registered in England and Wales under company number 01293463, with registered office at 38 Binsey Lane, Oxford, OX2 0EY United Kingdom.

Tel: +44 (0)1865 258300 Fax: +44 (0)1865 244696

All information correct at time of printing. For up to date terms and conditions, please visit [www.regent.org.uk/terms](http://www.regent.org.uk/terms).

# Enrolment Form (Please complete both sides)

## Choose your location, course and dates

Regent School:  Bournemouth  Brighton  Cambridge  Edinburgh  London  Oxford

Please choose your course:

- |   |   |   |
|---|---|---|
| <input type="checkbox"/> English World 33           | <input type="checkbox"/> IELTS Exam Preparation         | <input type="checkbox"/> English World ClasSIX    |
| <input type="checkbox"/> English World Combination  | <input type="checkbox"/> IELTS Combination              | <input type="checkbox"/> English World ClasSIX 10 |
| <input type="checkbox"/> English World 22           | <input type="checkbox"/> Cambridge Exam Preparation FCE | <input type="checkbox"/> English World ClasSIX 15 |
| <input type="checkbox"/> Arts, Literature & Culture | <input type="checkbox"/> Cambridge Exam Preparation CAE | <input type="checkbox"/> Legal English ClasSIX    |
| <input type="checkbox"/> Individual 30              | <input type="checkbox"/> Cambridge Exam Preparation CPE | <input type="checkbox"/> English for Leadership   |
| <input type="checkbox"/> Individual 25              | <input type="checkbox"/> Home Tuition 25                |   |
| <input type="checkbox"/> Individual 20              | <input type="checkbox"/> Home Tuition 20                | <input type="checkbox"/> TOEFL                    |
| <input type="checkbox"/> Individual 15              | <input type="checkbox"/> Home Tuition 15                |   |

Additional one-to-one hours per week?  5 hours per week  7.5 hours per week

Course start date: \_\_\_\_\_ Course finish date: \_\_\_\_\_

## Choose your accommodation

If you choose a residence, please write 1st and 2nd choices

Homestay single room  Homestay en-suite  Hotel  Residence 1st \_\_\_\_\_ 2nd \_\_\_\_\_

Accommodation start date: \_\_\_\_\_ Accommodation finish date: \_\_\_\_\_

Please tell us about any special requirements (eg: disability, allergies, diet) \_\_\_\_\_

Do you smoke?  Yes  No Would you prefer non-smoking accommodation?  Yes  No

What is your level of English?

Beginner  Elementary  Pre Intermediate  Intermediate  Upper Intermediate  Advanced  Very Advanced

Have you studied with Regent before?  Yes  No Which School? \_\_\_\_\_ When? \_\_\_\_\_

## Transfers

Would you like a taxi transfer to your accommodation?

Yes on arrival  Yes on departure  Yes on arrival and departure  No

Arrival: Airport/Station \_\_\_\_\_ Flight number \_\_\_\_\_ Date (dd/mm/yy) \_\_\_\_\_ Time \_\_\_\_\_

Departure: Airport/Station \_\_\_\_\_ Flight number \_\_\_\_\_ Date (dd/mm/yy) \_\_\_\_\_ Time \_\_\_\_\_

## Documents by courier

We can send your documents to you by email, fax or post. If you would like them sent by international courier we charge £50.

I would like my documents sent by international courier (£50).

## Calculating your fees

I would like to pay the full fees  I would like to pay deposit of £300 now and the full fees 30 days before the course starts

Course fee \_\_\_\_\_

Additional one-to-one lessons \_\_\_\_\_

Accommodation fee (except Home Tuition where accommodation is included in the course fee) \_\_\_\_\_

Transfer fee \_\_\_\_\_

Documents sent by courier fee \_\_\_\_\_

Total cost \_\_\_\_\_

## Personal Details (Please write in CAPITALS)

Family Name \_\_\_\_\_ First Name \_\_\_\_\_

Nationality \_\_\_\_\_ Occupation \_\_\_\_\_ Date of Birth \_\_\_\_\_

Male  Female Age \_\_\_\_\_ First Language \_\_\_\_\_ Second Language \_\_\_\_\_

How did you hear about Regent? \_\_\_\_\_

Who is paying for your course?  Myself  Parents  Company  Other

Name in Passport \_\_\_\_\_ Passport Number \_\_\_\_\_

Home Address \_\_\_\_\_

\_\_\_\_\_

\_\_\_\_\_

Email \_\_\_\_\_ Tel \_\_\_\_\_ Mobile \_\_\_\_\_ Fax \_\_\_\_\_

Address for invoice (if different) \_\_\_\_\_

\_\_\_\_\_

Emergency Contact During Course \_\_\_\_\_

Relationship to student \_\_\_\_\_ English spoken  yes  no Tel \_\_\_\_\_ Email \_\_\_\_\_

Reason for studying  Academic  Professional  Other

Name of your college/university (students) \_\_\_\_\_

Name of your company (professionals) \_\_\_\_\_

## Method of Payment (please tick)

Cheque (UK £ Sterling only)  Credit/Debit Card  Bank Transfer  Travellers Cheques/Cash

### Cheque (UK £ Sterling only)

Drawn on British Bank made payable to Instill Education Ltd. Please write student's name on the back of the cheque.

### Credit Card Visa Mastercard

- I hereby authorise Regent to charge the deposit of: £300 to my card
- I hereby authorise Regent to charge the balance of: £ to my card 30 days before the course starts
- I hereby authorise Regent to charge the full amount of: £ to my card now

Card number                 Security Code    (last 3 digits on reverse of card)

Valid from     Expiry date

Name of cardholder \_\_\_\_\_

Address of cardholder \_\_\_\_\_

Signature of cardholder \_\_\_\_\_

## Your agreement and signature

- I have read and understood the Terms and Conditions.
- I certify that all the information given by me in this enrolment form is accurate and complete.
- If applicant is under 18, a parent or guardian must sign this form.  
In doing so, the parent or guardian agrees to the Terms and Conditions.
- I agree to the use of my personal information, including health and religious or dietary requirements, set out in the terms and conditions.  Yes  No
- I agree that you can send me occasional information about Regent Language Training courses and services.  Yes  No

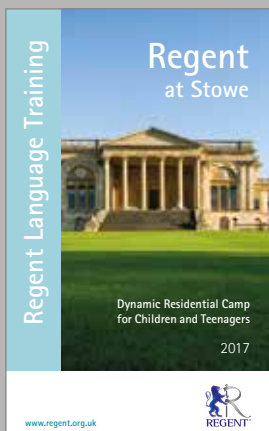
Signature of student \_\_\_\_\_ Date \_\_\_\_\_

Signature of parent or guardian (If student is under 18) \_\_\_\_\_ Date \_\_\_\_\_

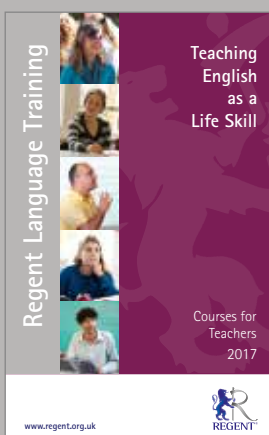
## Internationally recognised English language exams for academic and specific purposes

Exam	Level	Typically for	Available dates
<b>IELTS</b> - International English Language Testing System	It is mainly used to show ability from intermediate to advanced: you receive a test report that shows an overall score from 1 (non-user) to 9 (expert user).	Entrance into UK, USA, AUS, NZ universities but is recognised by academic institutions all over the world.	Every month
<b>BULATS</b> - Business Language Testing Service	The BULATS test report shows ability on the Common European Framework for Reference from A1-C2 (beginner to advanced).	Worldwide business and industry recruitment.	On demand in the school
<b>TOLES</b> - Test of Legal English Skills	There are two TOLES exams we recommend: TOLES Higher (Intermediate level) and TOLES Advanced (Advanced).	Entrance into international commercial law firms, in-house legal teams in private companies and top-class translators.	25.08
<b>TOEFL</b> - Test of English as a Foreign Language	The iBT test shows your ability on a scale of 1-120. Each section, Reading, Listening, Speaking and Writing, is scored out of 30 and combined to give your total score.	Entrance into English speaking universities and academic and professional institutions.	Every month
<b>Cambridge English Exams:</b> • Cambridge English: First (FCE)	FCE: An upper intermediate exam that tests your ability to deal confidently with a range of written and spoken communication situations. Exams are held at least once a month in the UK and the rest of the world. Level B2	Entrance into English speaking educational institutions, businesses and supporting immigration applications.	FCE 04.03; 10.03; 03.06; 06.06; 24.06; 27.07; 24.08; 28.11; 09.12
• Cambridge English: Advanced (CAE)	CAE: An advanced exam that tests your ability to communicate with confidence in English for work or study purposes. Exams are held every month in the UK and the rest of the world. Level C1		CAE 01.03; 11.03; 03.06; 07.06; 24.06; 20.07; 25.08; 29.11; 02.12
• Cambridge English: Proficiency (CPE)	CPE: A very advanced level exam, for learners who have achieved a high level of language skills. Exams are held in March, May, June, July, October, November, December in the UK and the rest of the world. Level C2		CPE 11.03; 08.06; 02.12





**Residential Camp**  
for Children and Teenagers  
[summerschools@regent.org.uk](mailto:summerschools@regent.org.uk)



**Courses for Teachers**  
[teachers@regent.org.uk](mailto:teachers@regent.org.uk)



**Courses for Professionals**  
[professionals@regent.org.uk](mailto:professionals@regent.org.uk)

**Regent Language Training**  
[info@regent.org.uk](mailto:info@regent.org.uk)  
+44 (0) 1865 258 338  
[www.regent.org.uk](http://www.regent.org.uk)

