



2017
STUDENT GUIDE

WELCOME TO DISCOVER ENGLISH

Discover one of Melbourne's best boutique English language colleges...

At Discover English we provide a first-class educational experience to benefit your life - personally and professionally. We offer the full range of General and Specialist English courses plus a number of value-added extras to ensure every student discovers their full potential.

Studying English at Discover will be your key to unlocking amazing experiences and meeting extraordinary people from all over the world.

The college is a full member of English Australia and is quality endorsed by NEAS.

Discover English was highly commended for its student support in the 2013 Victorian Education Awards and was a finalist in the Cambridge English Language Assessment Awards in 2014 for Outstanding Student Care, and again in 2015 for Outstanding Business Growth.



LAURA HARKONEN, FINLAND

"One of the reasons why I chose Discover English was the immediate reply I had from the staff. For me it was important to be studying at a great level of English, and I definitely found that here.

I'm currently taking the EAP Advanced course and my experience has been very good. I feel that I'm improving my skills, especially my writing, which was my goal initially. This course is perfect for me, it's been both challenging and fun so I'm really happy about that. When you study at an Advanced level, many difficult questions come up, but teachers are always happy to answer them and ensure that everyone takes in the explanation. My next course will be Cambridge English Proficiency. I feel anxious but prepared.

Melbourne has a unique lifestyle. For those who love making friends, enjoying a good coffee, enriching their cultural life, and feeling the vibrant dynamic of the city, this is definitely the place to be".



Melbourne Lane



Discover English Campus



Student Lounge

ABOUT DISCOVER ENGLISH

DISCOVER OUR SYSTEM...

Discover English was the first school to offer an extra 10 hours per week of free optional instruction to students (5 hours of study assistance and 5 hours of electives). This includes our one hour job seminar, in which students can get help with resumes, CVs and cover letters. We have social activities 7 days a week so students have plenty of opportunities to speak English in a fun environment with their classmates.

Students' academic skills are evaluated regularly with weekly progress tests. They are able to try the level up test any week when they are ready and meet the requirements. Our teachers give feedback on all skills areas and use a range of strategies to help students improve.

STUDENT CENTRED APPROACH

Students are at the centre of our organisation. We provide flexibility and choice to ensure that each individual student is doing the course that's right for them. Students are free to meet with Discover English staff throughout the day to discuss their course options. Our Academic Management team will help you to select a course based on your specific needs, be they academic, professional, skills-based or for communication. Our open-door policy means that we always have time to help you reach the next step in your educational goals. We welcome our students to trial other classes and we have an efficient procedure in place if students wish to change course. With this in mind, we have two timetable options in order to provide students with the freedom to choose what best suits their lifestyle and work commitments.

OUTSTANDING TEACHERS

The teachers at Discover English are truly remarkable people who bring their own unique style and individual flair to their classes. Amongst our teachers you'll find artists, musicians, writers, actors, filmmakers, academics, athletes and more who have lived and travelled all over the world. Our teachers are placed in classes best suited to their experience, qualifications, strengths and personalities. They regularly take their classes on fun and educational excursions, take the time to connect with their students and can give advice on the best places to see in Melbourne.

At Discover English, we aim to foster a culture of openness and honesty - students are very welcome to give feedback directly to their teacher regarding anything that happens in their class.



WILLIAM AXL, BRAZIL

"My English has improved a lot! When I arrived here 6 months ago it was really hard to communicate with others. However, Discover English has helped me to become more confident while speaking. I really like coming to school, the teachers and all staff in general are totally helpful and very patient with me. Also, in class I am able to learn more about the Australian culture and how to make the most of my stay in Melbourne.

One of the things I like the most is the possibility to take the Extra classes. These lessons are really important to keep boosting my English level in a much faster way, and they are for free! In class, we have two teachers per week, which makes the learning process more dynamic with two different teaching styles, and this helps me understanding more accents better".

10 REASONS TO CHOOSE DISCOVER ENGLISH

- 1 Students come first
- 2 First class student services
- 3 10 hours of free classes/ teacher support each week
- 4 English only campus
- 5 Finalist in many industry awards
- 6 Academic and fun approach
- 7 Personalised service
- 8 Morning and afternoon timetables and greater flexibility
- 9 Caring staff and teachers
- 10 Cambridge and TOEIC exam centre

LIFE IN MELBOURNE

DISCOVER A NEW WAY OF LIVING...

There is no city quite like Melbourne! Officially voted the Most Liveable City in the world for six consecutive years, Melbourne is an exciting and vibrant place with something for everyone to discover.

Discover the great outdoors at Melbourne's beautiful parks and pristine beaches. Discover culinary delights from all over the world. Discover artistic culture at any of the many unique galleries, museums and fashionable boutiques. Discover the world of sports with major international events such as the Australian Open tennis championship, the Formula One Grand Prix and the Melbourne Cup.

Located in the centre of the Free Tram Zone, Discover English is only minutes away from iconic landmarks such as Federation Square, Queen Victoria Market,

Flinders Street Station and Docklands. Degraves street with some of the best coffee in the city is only around the corner! We offer a free walking city tour on your first day at Discover English - this is a great chance to orientate yourself, meet your new classmates, find your new favourite cafe and ask our friendly staff about your new life in Melbourne.

ESTIMATION OF COSTS

Melbourne is a reasonably priced major city with a range of living options. As a guide, you will need a minimum of \$19,830* (excluding tuition) per year to cover accommodation, daily living costs, health services and other expenses. The amount of money you bring is a personal choice, but you must ensure you have enough money to cover certain typical expenses, for example:

Share accommodation	\$160 - \$300 p/w
Bond	4 weeks rent (payable as a deposit)
Monthly transport	\$140 per month
Monthly mobile phone plan	\$29
Coffee	\$3.00 - \$4.00
Lunch	\$6 - \$12
Local telephone call	50c
Mobile Broadband	\$29 p/m

* All costs are indicative only and in Australian dollars.



St. Kilda Beach



DISCOVER OUR CAMPUS

CAMPUS FEATURES AND FACILITIES

- Dedicated student activities officer
- Dedicated homestay coordinator
- Clarity software for online ESL learning and extension activities
- 6 floors with high-speed wireless Internet
- 2 Computer labs
- Fantastic central location on Collins Street (in the free tram zone)
- Modern and bright classrooms equipped with computers and projectors
- Student break areas on each level
- Student kitchen and lounge
- Student library with staff for supervised self-access



Classroom



Computer Lab



JENIFER DENIS, NEW CALEDONIA

"I never imagined how incredible my life would be working as a Demi-Pair and studying English in Melbourne.

Currently, I live with an Australian family and I feel part of it thanks to the chemistry we have developed. I consider myself "the big sister" because I really enjoy the time I share with them, especially with the two children I take care of. This, along with my General English course, has helped me to improve my English really quickly as I speak with locals at home and with people from all over the world in class.

So, I've been able to learn a new language, a new culture, new traditions and meet so many interesting people too. Working and studying has not been a job, these are now part of my life and I would recommend everyone experience this in Melbourne".



DISCOVER OUR COURSES

GENERAL ENGLISH

CRICOS: 073679D
 BEGINNER - ADVANCED (1 TO 70 WEEKS)
 START DATES: EVERY MONDAY

General English aims to develop students' English language skills with a focus on fluency and confidence. Through an integrated communicative approach, students practice reading, writing, listening and speaking. Students are taught the building blocks of grammar and how to use them to interact in meaningful and useful ways.

General English at Discover is tiered from Beginner to Advanced which means there is a level suitable for everyone. You will be carefully placed in a class that matches your level so you are challenged but not out of your depth. Regular weekly assessment and a one-on-one meeting with your teacher will help us to track your progress and give guidance as to when you are ready to go to the next level.

Our highly-qualified and friendly General English teachers have the patience, knowledge and skills required to foster a learning environment which is practical and fun. The diverse range of activities - including excursions, games, projects, presentations and all forms of assessment - means General English is the perfect course for making friends and developing English skills.

NO MINIMUM ENTRY

TIMETABLE: AM, PM

ENGLISH FOR ACADEMIC PURPOSES

CRICOS: 073678E INTERMEDIATE - ADVANCED (5 TO 31 WEEKS)
 START DATES: EVERY 5 WEEKS

With a special emphasis on writing, research and critical thinking the English for Academic Purposes (EAP) course is designed to develop, practice and refine the skills necessary for further study in certificate, diploma, degree or post-graduate level courses.

Students will be guided through various academic processes such as research (identifying reliable sources and analysing material using critical thinking), drafting of different kinds of academic writing (from developing a thesis statement to scaffolding an essay) and editing (polishing written work to improve the overall standard of a paper). All of this will be done with constant feedback and suggestions so students will be prepared for entry into their chosen tertiary course.

EAP also improves students' formal English skills and can assist in preparing for the IELTS test. Discover English has many pathway partners for further study options that incorporate EAP.

MINIMUM ENTRY: IELTS 5.0 or equivalent

TIMETABLE: PM

CAMBRIDGE FOUNDATION STREAM OF GENERAL ENGLISH

UPPER INTERMEDIATE (5 OR 10 WEEKS)
 START DATES: EVERY 5 WEEKS

Cambridge Foundation is an intensive course aimed to prepare students for the challenges of our Cambridge FCE Preparation course. Cambridge Foundation uses an integrated communicative classroom approach alongside a comprehensive syllabus to develop not only language skills but also exam-taking strategies.

Cambridge Foundation students will study grammatical frameworks using real-world material in order to gain a thorough understanding of the intricacies of native English. The course is formative-assessment driven so students consistently receive feedback and can improve on their reading and writing skills - all the while interacting in a dynamic and engaging atmosphere.

Accuracy and fluency are focused on equally in Cambridge Foundations so students can feel prepared and self-assured in their abilities when they move on to higher English learning. This fast-paced course is also taught by highly-qualified and experienced teachers who aim to create an inclusive and fun learning atmosphere.

Cambridge Foundation is ideal for students who are ready to work hard, be challenged and improve quickly.

MINIMUM ENTRY: IELTS 5.0 or equivalent

TIMETABLE: AM

BUSINESS ENGLISH

CRICOS: 073675G
 INTERMEDIATE - UPPER-INTERMEDIATE (1 TO 26 WEEKS)
 START DATES: EVERY MONDAY

Business English is a high level course that aims to prepare students with the English language skills needed to succeed in a modern corporate environment. With a high level of assumed grammatical knowledge, Business English is the perfect course for motivated students who wish to expand their skill set.

Combining theoretical business paradigms with a range of practical tasks, students are sure to develop the expertise required to liaise with clients and deliver presentations and reports. Business English explores a range of business-based topics with an emphasis on specialized vocabulary and communicative skills.

The course develops students' confidence and ability to communicate effectively in English in a business context while providing on-going feedback and assessment.

MINIMUM ENTRY: IELTS 5.0 or equivalent

TIMETABLE: AM

CAMBRIDGE (PET, FCE, CAE, CPE)

CRICOS: 074419E
 EXAM PREPARATION (10 TO 52 WEEKS)
 START DATES: JAN, MAR, JUN, SEPT

Our Cambridge ESOL courses are specially designed to prepare students for the Cambridge certificate examinations.

Cambridge certificates are valid for life and recognised by more than 11,000 employers, universities and government bodies worldwide. Aside from being one of the most widely used English language proficiency exams, Cambridge certificate examinations are also based on practical, real-world English. Cambridge ESOL courses don't just teach students how to pass an exam, they provide students with a well-rounded language experience and explore the more complex elements of English - such as phrasal verbs, colloquialisms, idioms and slang. Cambridge ESOL courses are not just for students who need a proficiency exam grade - they are essential for any student who has a future professional life in English.

Our Cambridge courses offer an intimate learning opportunity as they are closed classes and do not admit new students after the start date. There is a maximum of 16 students per class in PET, FCE and CAE and only 8 in CPE. Two highly skilled teachers who have a vested interest in the outcomes of their students will remain with the class throughout the course.

MINIMUM ENTRY: IELTS 4.5 (PET), 5.5 (FCE), 6.0 (CAE), 7.5 (CPE)

TIMETABLE: AM

IELTS PREPARATION

CRICOS: 076496J INTERMEDIATE TO ADVANCED (1-21 WEEKS)
 START DATES: EVERY MONDAY

The IELTS test was taken more than 2 million times in the last year and is currently the world's most popular English language proficiency test for people wishing to do higher education or migrate globally.

Our IELTS Preparation courses cover reading, writing, listening and speaking skill development for both the general and academic tests with a focus on the techniques needed to successfully achieve desired IELTS score outcomes.

IELTS Preparation at Discover English is taught by highly experienced teachers who truly understand the intricacies of the IELTS test. With a high assumed knowledge of English grammar and vocabulary, IELTS Preparation is for truly advanced students who wish to hone their test taking techniques and skills to achieve their desired IELTS score.

MINIMUM ENTRY: IELTS 5.0 or equivalent

TIMETABLE: PM

DISCOVER MORE...

ENGLISH + HOTEL INTERNSHIP*

MINIMUM ENTRY LEVEL: INTERMEDIATE AND ABOVE
PROGRAM DURATION: 6 MONTHS

Our English + Hotel Internship programme is a paid work-experience programme at a four-star hotel or resort in Australia. This course, designed for Working Holiday Visa holders, is a great way to practice English, learn new skills and earn a wage. Students can gain experience in the following roles: housekeeping, laundry, kitchen hand, personal assistant, cook, food and beverage attendant and maintenance. As you gain valuable work experience in the hotel industry, you will be working with Australian and International colleagues and potentially making lifelong friendships. The skills learned in our English + Hotel Internship course are transferable and will be useful in many modern, working environments.

ENGLISH + DEMI PAIR*

MINIMUM ENTRY LEVEL: INTERMEDIATE AND ABOVE
PROGRAM DURATION: 4 - 6 MONTHS

Our General English + Demi Pair programme is a fantastic way to immerse yourself in the English language and learn practical life skills while bonding closely with an Australian family. The benefits of the demi pair programme are numerous - there is no need to search for a job, home or friends as all of these things are embedded in the programme. The lifestyle is enough to keep you busy and active while still ensuring you have time to relax and explore the city. The necessity of speaking real-life English with your new family, which will be supported by classroom based learning, will ensure your skills improve rapidly. The General English + Demi pair programme is available to students with a Permission to work visa.

ENGLISH + HOSPITALITY*

MINIMUM ENTRY LEVEL: INTERMEDIATE AND ABOVE
PROGRAM DURATION: 7 OR 17 WEEKS.

Hospitality and service is one of the biggest and most dynamic industries in Melbourne, a city with thousands of cafes, restaurants, bars and a major casino. The Discover English + Hospitality course combines quality English language learning and hands-on hospitality training to help get you started in your dream job. At the end of the course students will receive actual qualifications and certificates required to work in the highly regulated hospitality industry. Furthermore, students will be well prepared for the busy lifestyle of a Melbourne barista, waiter or bartender. Coffee and conversation are at the heart of the quintessential Melbourne life and with our English + Hospitality course you will be able to master both.

* These programs are available for students on a Working Holiday Visa only

CLASS TIME	SUPERVISED SELF STUDY	EXTRAS
8.30am - 1pm	1pm - 2pm	2pm - 3pm
1.30pm - 5.45pm	11am - 12pm	12pm - 1pm

TIMETABLE

	GE	IELTS	CAMBRIDGE	EAP	BE	
COMMUNICATION SKILLS	■	■	■	■	■	KEY ■ Strong Emphasis ■ Regular Practice ■ Included
EVERYDAY GRAMMAR	■	■	■	■	■	
EVERYDAY ENGLISH	■	■	■	■	■	
ACADEMIC ENGLISH	□	■	■	■	■	
SPECIALISED LANGUAGE	□	■	■	■	■	
ASSESSMENT & FEEDBACK	■	■	■	■	■	
FORMAL LANGUAGE	□	■	■	■	■	
PRONUNCIATION	■	■	■	■	■	
READING & WRITING	■	■	■	■	■	
HAVING A GREAT TIME!	■	■	■	■	■	

SKILLS MAP

COURSE LEVEL	ENTRY LEVEL IELTS	GE	BE	EAP	IELTS	PET	CF	FCE	CAE	CPE	EXIT LEVEL IELTS
MASTERY	7.5	■								■	8.0+
ADVANCED PLUS	6.5								■		7.0+
ADVANCED	6.0	■	■	■	■			■	■		6.5+
UPPER INTERMEDIATE	5.5		■	■	■		■	■			6.0+
INTERMEDIATE	5.0		■	■	■	■	■				5.5+
PRE INTERMEDIATE	4.5					■					
ELEMENTARY		■									
BEGINNER		■									

COURSE MAP

GE General English
BE Business English
EAP English for Academic Purposes

IELTS International English Language Testing System
PET Cambridge English: Preliminary
CF Cambridge Foundation

FCE Cambridge English: First
CAE Cambridge English: Advanced
CPE Cambridge English: Proficiency

DISCOVER OUR DIFFERENCE

VOLUNTEERING

Teaching Assistant Program

Experience Australian schools and culture by assisting a teacher in developing and delivering bilingual language lessons. As a native speaker of the target language you will be of great help to the teacher and the students. You will also improve your conversational skills and build confidence in a professional workplace.

The Conservation Volunteer Program

Join other students and local Australians on various environmental and wildlife conservation projects. Volunteering on these projects is a fantastic way to experience Australia, see regional Victoria and have close contact with nature. Engage with the local community and meet volunteers of different nationalities and ages!

ENGLISH ONLY!

What's the best way to improve your English? Use it all the time!

What's the best way to make friends from other countries? Speak English with them!

What's our fantastic policy to help you do both? English only!

Our entire campus is a dedicated ENGLISH ONLY ZONE and Peggy the Piggybank is always listening for other languages so she can gobble up your spare change. Speaking only in English is an essential part of your educational and social experience here in Melbourne so we encourage our students to really try their hardest - even when no teacher is around to remind you!



STUDY TOURS

Custom design your study tour! We deliver an unforgettable educational experience for international groups, providing a unique combination of tailored English language classes and fun, exciting activities and excursions. We will take care of all your needs including meet and greet services, accommodation, meals, transfers, transport, activities, excursions and welcome and farewell functions.

FURTHER STUDY

Discover English students have access to a number of further study options with our pathway partners. For a full list of our accreditation agreements visit www.discoverenglish.com.au/further-study

PATHWAY PARTNERS



CRICOS: 02634E



CRICOS: 02439G



CRICOS: 03057C



CRICOS: 02411J



CRICOS: 03057C



CRICOS: 01590J



CRICOS: 00219C



CRICOS: 00231G



CRICOS: 00012G



CRICOS: 02386E



CRICOS: 01218G



CRICOS: 02386E



CRICOS: 01682E



CRICOS: 00724G



CRICOS: 03389E



CRICOS: 01505M

DISCOVER ENGLISH EXAM CENTRE

Discover English College is an official Cambridge & TOEIC Exam Centre. After completion of the exam preparation course students can take their exams in the comfort of our modern facilities and in the familiar environment.



CAMBRIDGE ENGLISH
Language Assessment

Authorised Centre

DISCOVER OUR WORLD

EXTRAS

Extras is a free one-hour elective run twice a day at Discover English. Our newly revamped Extras programme includes a wide range of fun and exciting subjects! We also have the essential topics covered in our Extras classes. Perfect your pronunciation, boost your grammar, hone your listening skills and enjoy interesting conversations in our extras classes. Extra classes cater to all levels of English, are multidisciplinary and make use of a wide range of resources.

NEW IN 2017!

Drama Club - Featuring a wide range of theatre sports and improvisation games, Drama Club is a great way to unleash your creativity and bring out your inner actor. You'll be so busy having fun that you won't be nervous about speaking English!

Sing-along - Fancy yourself a superstar on the microphone? You'll love our sing-along class where you'll learn the words and meanings of English language pop songs. Get ready to wow your friends when you sing along!

Australiana - Want to know the difference between a bludger and a drongo? What

are lamingtons and togs? And most importantly, what is the best Aussie beer? Find out the answers to these questions and many more in our Australiana Extras class.

WEEKLY FEEDBACK

Teachers regularly provide students with feedback on their progress by collating weekly test scores and information observed in class. Students have ample opportunity to speak with their teachers about how to overcome weaknesses, build on current strengths and move forward to the next level. Our teachers are open, honest and caring about their students' achievement and are happy to direct you to further resources and practices which will help you to improve.

ONGOING ASSESSMENT

Assessment is undertaken regularly to monitor and track progress. Students are given a wide range of assignments, tests and homework exercises that help to extend all four macro skills - reading, writing, listening and speaking. Who says tests have to be boring? The diversity of our assessment means students will not just be answering grammar questions, but

will also be giving presentations, creating posters, working in pairs and small groups, and of course speaking with their teacher one on one. Additionally students have the opportunity to move up to the next class every week by taking a level up test.

SUPERVISED SELF-ACCESS

Need a bit of extra help with your homework? A teacher is in our computer lab and library study space during supervised self-study periods to assist with anything you might need. From homework to CVs, or any other questions you might have about Melbourne life and the English language.

FLEXIBLE COURSE CHANGES

We have an extensive range of course options available for every student. If you are in any doubt about which course is the best for you we can assist you to find the perfect fit for your needs, and provided you have the right language level, you can easily move from one course to another.

TIMETABLE

Morning and afternoon timetables give students greater flexibility.

Albania	Chile	Finland	Iran	Lichtenstein	Netherlands	Poland	Slovenia	USA
Argentina	China	France	Italy	Macau	New Caledonia	Portugal	Spain	UAE
Austria	Colombia	Germany	Japan	Macedonia	New Zealand	Reunion Island	Sri Lanka	United Kingdom
Belarus	Congo	Greece	Kenya	Malaysia	Pakistan	Romania	Sweden	Uruguay
Belgium	Costa Rica	Hong Kong	Korea	Mauritius	Papua New Guinea	Russia	Switzerland	Uzbekistan
Brazil	Cuba	Hungary	Kuwait	Mexico	Peru	Saudi Arabia	Taiwan	Venezuela
Cambodia	Czech Republic	India	Lao	Myanmar	Philippines	Serbia	Thailand	Vietnam
Canada	Ecuador	Indonesia	Libya	Nepal		Slovakia	Turkey	

STUDENT SUPPORT

“The only mistake you can make is not asking for help.”
Sandeep Jauhar

Moving to a foreign country to learn a new language is an exciting but challenging experience. Even something as simple as opening a bank account may become a difficult task in a new country. Fortunately, we have kind and caring support staff from a range of language backgrounds to help you with any problems you might encounter. We can support you in many areas including day-to-day life in Australia, finding your way around in a big city, and anything at all relating to housing, medical issues, activities, your studies and counseling. The emotional welfare of our students is extremely important and we strive to make you happy and comfortable in your home away from home!

ACADEMIC SUPPORT

At Discover English students always come first. We offer counselling and advice to assist you with your academic studies. Our Academic Department has an open door policy and you can talk to them about courses or future studies whenever you like.

WELFARE SUPPORT

Our dedicated Student Support Services staff is here to help you if you feel homesick, have personal problems or just want to talk.

BEGINNER BOOSTER

Learning a new language is very challenging - fortunately we have a special class to provide extra help to our Beginner students. Beginner Booster is provided for free to students who need personalised support.

DAILY ACTIVITIES

At Discover English, learning is not just about the classroom, it is also about meeting people from other countries, social activities, Melbourne life and Australian culture. Discover English has regular fun activities and tours to suit a range of interests. Students can sign up for weekend tours including; Yarra Valley winery tours, a surf lesson, trips to the Great Ocean Road, Phillip Island and much more.

JOB CLUB

Discover work options with our weekly Job Club! It is a free session to assist students with finding work or looking for alternative work. Our two timetables mean students have greater opportunities to find work that fits in with their study commitments.



YUKA KAMATA, JAPAN

“My experience at Discover English has been really meaningful due to the kindness and willingness that everyone here possesses. The teachers and staff truly understand students’ lives, and this creates a friendly and empathetic environment.

Studying at Discover English not only means learning another language, it also involves new and rewarding experiences contributing to our society. I had the chance to participate in volunteering as a Japanese teacher. This experience helped me to understand how to teach others and use different learning methods. Moreover, my English improved faster since I was dealing with Australian students”.



Great Ocean Road



Student at work



Melbourne CBD

ACCOMMODATION & OTHER SERVICES

Discover English is happy to assist you with finding accommodation in Melbourne:

HOMESTAY

The Discover English dedicated homestay coordinator approves all homestay providers and places students according to individual needs and preferences where possible. There are two options available:

HALF BOARD (includes breakfast and dinner weekdays and 3 meals on weekends).

ROOM ONLY (single room with no meals, but students have access to the kitchen).

ACCOMMODATION

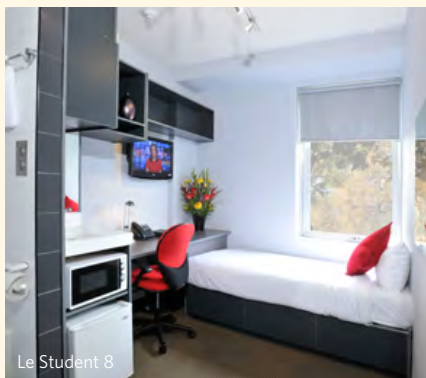
Student residence offers single-studio apartment type rooms for students who want to have an independent lifestyle.

All rooms are furnished and include an ensuite bathroom, bar fridge, microwave, work desk and LCD TV with Foxtel. For those looking to cook a meal, there is a communal kitchen area. Short term to long term stays available

SHARED ACCOMMODATION

Shared accommodation offers opportunities to live with other students from different nationalities. There are various options from single, twin share to dorm rooms.

Other facilities include dining room, kitchen, coin laundry, gym, entertainment area and library. Short term to long term stays available.



Le Student 8



Matilda House

HOW TO APPLY

Complete the application form (available online at www.discoverenglish.com.au) and email it to enrolments@discoverenglish.com.au. Alternatively, we can recommend an educational agent in your city to assist you.

HOLIDAYS

Discover English is closed for two weeks over the Christmas/New Year period. The college is also closed for all National and State Public Holidays including: Australia Day, Labour Day, Good Friday, Easter Monday, ANZAC Day, Queen's Birthday and Melbourne Cup (a full week's tuition is payable in weeks comprising public holidays, no refunds or discounts will be offered due to shortened weeks).

SCHOOL HOURS

The college is open from 8am to 6pm Monday to Friday. You have access to all college facilities between these hours, including the library, computer lab and student lounge.

OTHER SERVICES WE CAN ALSO ASSIST WITH:

- Airport transfers
- Medical insurance (OSHC)
- Work advice
- Backpacker recommendations
- Further study advice
- Introductions to private tutors
- Banking
- Tour/trip booking services



City tour as part of Orientation

CONTACT US

247 Collins Street,
Melbourne ,3000, VIC, Australia

Tel: +61 3 9602 4800

Fax: +61 3 9602 4877

info@discoverenglish.com.au

www.discoverenglish.com.au

CRICOS PROVIDER CODE: 03262J | ABN: 83 142 642 742

The information in this brochure is correct at the time of publication. However, Discover English reserves the right to alter, amend or delete details at any time without notice. All images and content are subject to copyright. All images are property of Discover English (Feb 2017). This brochure is provided free of charge. For the most up-to-date course information please visit www.discoverenglish.com.au
Front cover: Manuela Villa Ortiz. Back cover: Nico Stahlberg.

Follow Discover English on:



CAMBRIDGE ENGLISH
Language Assessment

Authorised Centre

