



**ABILITY**  
English

Come to  
**Australia** & say  
**Hello**  
to the world in  
**English**

Hola Ciao Bonjour  
你好 こんにちは  
Ahoj Olá 안녕하세요  
السلام عليكم



  
Australia  
FutureUnlimited

  
ENGLISH  
AUSTRALIA  
QUALITY | SUPPORT | ASSURANCE

**2016**

Say Hi  
to the







# HELLO



# future You

We know you want to **explore** the world, **expand** your career and **connect** with people who will **change** your life.

Our dream is to help you, starting with **Hello.**

# 01

Welcome

---

We are **experts**  
in English language  
teaching and course  
**innovations.**

Come and join  
our **caring family,**  
dedicated to helping  
you **achieve your**  
**goals.**

---

## DESTINATION

Central Locations Sydney & Melbourne	07
Modern Facilities	09

## ENGLISH CLASSES

Course Menu	12
Leading Innovations	15
General English	17
General English Plus	19
Survivor English	21
Pronunciation & Fluency	23
English for Academic Purposes (EAP)	25
FCE & CAE Cambridge Test Preparation	27
IELTS Test Preparation	29
Friday Electives	31

## COURSE DATA

Flexible Study Options	35
Easy Course Changes	37
Balanced Timetables	39

## SUPPORT TEAM

Diverse Nationalities	42
Brilliant Teachers	45
Industry Awards and Contributions	47
Student Services	49
Social Activities & Job Club	51
Accommodation	53



Come and **study**  
in Australia!  
A land of blue skies,  
sunshine and endless  
opportunities





# DESTINATION



# 05



Destination

---



Choose  
from two  
of Australia's  
**most exciting**  
cities



# Central Locations

## Melbourne

Number 1 most livable city in the world for the 5th time!\*

OUR MELBOURNE CITY CAMPUS IS VERY CLOSE TO:

- » Flinders Street station (trains & trams)
- » Main tram lines & bus stops
- » Top tourist attractions: the Yarra River, Federation Square (cultural centre), Royal Botanic Gardens
- » Major museums & art galleries
- » Famous laneway cafes & small bars
- » City centre shopping
- » Easy tram ride to St Kilda Beach
- » Queen Victoria food markets
- » Affordable restaurants from around the world

\*Source: The Economist Intelligence Unit Global Liveability Ranking 2015

## Sydney

Voted world's friendliest city\*

OUR SYDNEY CITY CAMPUS IS VERY CLOSE TO:

- » Central station (trains & buses)
- » Main tourist attractions: Darling Harbour, Opera House, Harbour Bridge, Royal Botanic Gardens
- » Major museums & art galleries
- » Fresh food markets
- » City centre shopping
- » Easy transport to Sydney's most famous beaches
- » Funky shops & bars
- » Affordable restaurants from around the world
- » Sydney's university district

\*Source: Condé Nast Traveler Magazine

## 2015 EIU Rankings for the Most Livable Cities in the World

CITY COUNTRY	CITY RANK	OVERALL RATING	STABILITY	HEALTHCARE	CULTURE & ENVIRONMENT	EDUCATION	INFRASTRUCTURE
Melbourne Australia	1	97.5	95	100	95.1	100	100
Sydney Australia	7	96.1	90	100	94.4	100	100

(100: ideal; 0: intolerable)





We've created  
the perfect  
place for you to  
**learn** and **grow**  
with others



# Modern Facilities

In the past 12 months we have expanded and improved our ABILITY English campuses so that your study experience is the best it can be.

Every classroom has upgraded technology with wireless internet, digital projectors and computers. Throughout the colleges are student computers you can use at your leisure to check emails or Facebook, print documents, or research important information for your life in Australia. Each campus has a multimedia library with English learning software that you can use to study in your free time. We have bright, clean kitchens for you to cook and store your food, with free tea and coffee facilities and an abundance of microwaves and fridges.

There are social areas throughout the campuses, including a student room with couches for you to talk with friends and relax.

After hours, the student room can turn into a party venue with a stage and sound system. We design our colleges so you have the optimal environment to learn well and learn for life.

- » Modern bright classrooms
- » Free computer access
- » Wireless internet access in all areas of the campuses
- » Kitchen, lunch room, microwaves & fridges
- » Video cameras & digital projectors
- » Rooms for self study
- » Multimedia Library
- » Prayer room
- » Free tea, coffee & your own ABILITY cup



"I think this school really meets my expectations because we've got quite a lot of great facilities; huge computer rooms where we can study after class or if we want to look something up on the internet. We also have a modern kitchen where we can prepare meals. The location of the school is just perfect, 2 minutes from Central Station so really easy to access." **Anais, France**



We are  
**experts** at  
teaching English  
language skills  
in new and  
effective ways




---



# ENGLISH classes



# Find the best course to meet your language

ABILITY COURSES	 GRAMMAR	 VOCABULARY	 WRITING & READING
GENERAL ENGLISH	✓ ✓	✓ ✓	✓
GENERAL ENGLISH PLUS	✓ ✓	✓ ✓	✓ ✓
SURVIVOR ENGLISH	✓	✓ ✓	✓
PRONUNCIATION & FLUENCY	✓	✓	
ENGLISH FOR ACADEMIC PURPOSES (EAP)	✓	✓ ✓	✓ ✓
FCE & CAE CAMBRIDGE TEST PREPARATION	✓ ✓	✓ ✓	✓ ✓
IELTS TEST PREPARATION	✓	✓ ✓	✓ ✓








# ABILITY

et

# goals

## The ABILITY Course Menu

 SPEAKING & LISTENING	 PRONUNCIATION	 ACADEMIC PREPARATION	 INTERCULTURAL COMMUNICATION	 PROGRESS TESTING
✓✓	✓✓		✓	✓
✓✓	✓	✓✓	✓	✓
✓✓	✓✓		✓✓	✓
✓✓	✓✓		✓	✓
✓✓	✓	✓✓	✓	✓✓
✓✓	✓	✓		✓✓
✓✓	✓	✓		✓✓

✓ Regular Focus    ✓✓ Strong Focus

Our **popular**  
courses will help  
you achieve  
your English  
language **goals**

---



# Leading Innovations

## Speaking & Listening



The more you speak  
in English, the more you  
master English

In our courses we are constantly challenging you to speak English as much as you can. Practice is the only way you are going to improve, so we have built our courses to give you maximum conversation practice. As well as this, we give you a very high level of error correction when you make mistakes, and help you to understand your mistakes so that you can fix them. We even help you find new ways to practise with native speakers! The more you listen, the better you speak. Improve your speaking while you make lots of new friends from all over the world!

## Intercultural Communication



Invest in your future  
global career

We live in a globally connected world and that world speaks English. International communication in the workplace is more common now than ever before. Our specialised intercultural communication training prepares you to communicate and succeed in your English conversations. We train you how to talk with people from different cultures, how to adapt your communication so you make friends and get the job of your dreams.

## Pronunciation



Improve your  
speaking faster

Good pronunciation is very important. ABILITY English has one of the best reputations for pronunciation training in Australia. We teach pronunciation and fluency skills with a teaching method unique to ABILITY. Good pronunciation training improves your listening and increases your fluency. Our pronunciation method teaches you to speak with confidence in English.

## Academic Preparation



Expand your potential and  
take your study further

At ABILITY English we know that different students have different goals, and that students learn in various ways. Our expert teachers fully prepare you for any course you want to study and any test you want to take. They help you work your hardest to be your academic best. You get the practice you need to gain the best possible results.

# The fun way to learn English



# General English



## Learn English fast in fun and interactive classes

Our General English course teaches all the skills you need to be highly competent in the English language. We make sure all your skills are developed to a high level and we continuously check that you are improving well.

Our teachers work hard to keep your English improving as fast as possible. These classes are fun and interactive, with excellent English and lifelong friends being common results.

### COURSE FEATURES

- » Experienced energetic teachers
- » Highly interactive sociable classes
- » Full teaching of vocabulary, grammar, listening, speaking, reading & writing
- » Strong speaking focus
- » Weekly testing & teacher counselling to go up English levels faster
- » Study options to suit your timetable needs; with Day, Evening, Morning or Afternoon courses

#### Pronunciation

One focused class per week, Beginner to Advanced



#### Speaking & Listening

Focus on social communication



#### Grammar

Fundamental grammar with error correction



#### Vocabulary

Fundamental everyday English



#### Writing & Reading

Fundamental everyday English



#### Intercultural Communication

One focused class per week, Intermediate to Advanced



#### Progress Testing

Weekly grammar tests, fortnightly speaking & listening tests



STUDY OPTIONS	LENGTH	START DATES	CORE CLASSES	TIMES	ELECTIVE CLASSES	ENTRY LEVEL
All Day English	1 - 72 weeks	Any Monday	20 hours Mon to Thurs	8.30 to 14.30 9.00 to 15.00	3 hours Friday 9.00 to 12.15	Beginner to Advanced
Evening English	1 - 72 weeks	Any Monday	20 hours Mon to Fri	17.00 to 21.30	Nil	Beginner to Advanced
Morning English	1 - 72 weeks	Any Monday	14 hours Mon to Thurs	8.30 to 12.15 9.00 to 12.45	Nil	Beginner to Advanced
Afternoon English	1 - 72 weeks	Any Monday	6 hours Mon to Thurs	13.00 to 14.30 13.30 to 15.00	Nil	Beginner to Advanced

The **award-winning**  
course for your  
academic goals



# General

# English Plus



## Intense & serious study preparing you for academic goals

If you want English learning that takes you quickly towards a focused goal, this course is the best option for you. This course is an option at the Intermediate and Upper Intermediate level of English, and helps you succeed better in IELTS Test Preparation, Cambridge Test Preparation and EAP courses. This is the perfect course if you have academic goals and like to be pushed to study hard for better results.

ABILITY English won the 2011 English Australia Innovation Award for this course because we teach General English in different ways for different types of students.

### COURSE FEATURES

- » Innovative award-winning course
- » Trains you to think critically
- » Serious teaching style
- » Motivates students to develop academic skills
- » Prepares for study & work goals
- » Develops all English language skills strongly
- » Weekly testing & teacher counselling help you to improve your English faster

#### Pronunciation

One focused class per week



#### Academic Preparation

IELTS test, Cambridge test and academic content



#### Speaking & Listening

Presentation skills



#### Grammar

Fundamental grammar & error correction



#### Vocabulary

Focus on vocabulary for specific purposes



#### Writing & Reading

Mix of everyday & academic writing



#### Intercultural Communication

Focused classes on critical thinking



#### Progress Testing

Weekly grammar tests, regular IELTS & Cambridge practice tests



STUDY OPTIONS	LENGTH	START DATES	CORE CLASSES	TIMES	ELECTIVE CLASSES	ENTRY LEVEL
All Day English	1 - 72 weeks	Any Monday	20 hours Mon to Thurs	8.30 to 14.30 9.00 to 15.00	3 hours Friday 9.00 to 12.15	Intermediate to Upper Intermediate
Evening English	1 - 72 weeks	Any Monday	20 hours Mon to Fri	17.00 to 21.30	Nil	Intermediate to Upper Intermediate
Morning English	1 - 72 weeks	Any Monday	14 hours Mon to Thurs	8.30 to 12.15 9.00 to 12.45	Nil	Intermediate to Upper Intermediate



**Start a  
conversation  
with  
confidence**

---



# Survivor English



## Gain confidence speaking English in real situations

You may feel fearful or shy speaking with locals, so in this course we teach you how to overcome your fears and connect. Every day we teach you practical communication skills with lots of detailed feedback from your teacher, so you are more confidently prepared to manage and control real-life situations that challenge you.

We give you opportunities to practise common, real-life communication using the appropriate language with English speakers in a variety of environments. Step out of your comfort zone and into conversation with the world.

### COURSE FEATURES

- » Regular speaking practice in real situations
- » Learn how to speak like a native speaker
- » Highly interactive sociable classes
- » Strong speaking focus
- » Builds your confidence with native speakers
- » Builds highly valued intercultural communication skills
- » Experienced teachers giving detailed feedback
- » Improves pronunciation & fluency
- » Only available at ABILITY English

#### Pronunciation

Strong pronunciation training & error correction



#### Speaking & Listening

Intensive social communication skills training



#### Grammar

Fundamental grammar with error correction



#### Vocabulary

Real English for everyday challenges



#### Writing & Reading

Fundamental everyday English



#### Intercultural Communication

Fundamental skills to connect you to others



#### Progress Testing

Weekly assessment of communicative skills



STUDY OPTIONS	LENGTH	START DATES	CORE CLASSES	TIMES	ELECTIVE CLASSES	ENTRY LEVEL
All Day English	5 or 10 weeks	Every 5 weeks For dates see below	20 hours Mon to Thurs	8.30 to 14.30 9.00 to 15.00	3 hours Friday 9.00 to 12.15	Intermediate to Advanced

2016 Start dates 04.01.16 • 08.02.16 • 14.03.16 • 18.04.16 • 23.05.16 • 27.06.16 • 01.08.16 • 05.09.16 • 10.10.16 • 14.11.16

# The **PRON** Teaching Method

01  
02  
03  
04

## ● **Pronunciation**

We train you to build new muscle memory, connecting your brain, your body, your emotions and the English language.

## ● **Repetition**

You listen to natural spoken English again and again. You then intensively repeat until it is correct.

## ● **Oral Correction**

We analyse your personal speech problems and intensively re-train your speech patterns.

## ● **Neural Networks**

We teach pronunciation as a chain of sounds that communicates a social, psychological, or emotional message.



# Pronunciation & Fluency



## Fix your errors Find your English voice

This course is an intense and personalised speaking correction course to help you sound more like a native speaker. It is a full-time focused class that re-trains the way you speak English.

We teach pronunciation and fluency skills using the PRON method. The method is exclusive to ABILITY English and we give our teachers specialised expert training.

### COURSE FEATURES

- » Learn how to speak English like a native speaker
- » Unique pronunciation method
- » Intensive speaking training
- » Personalised diagnosis of your speaking problems
- » Builds confidence & fluency
- » Smaller class sizes for personal attention
- » Builds vocabulary for everyday situations
- » Improves listening
- » Use of mouth model to clearly demonstrate corrections needed
- » Intensive error correction & strong training in self-correction techniques
- » PRON teaching method only available at ABILITY English

### Pronunciation

Intensive pronunciation error correction



### Speaking & Listening

Intensive conversation skills training



### Grammar

Grammar training through sound



### Vocabulary

Vocabulary training through sound



### Intercultural Communication

Fundamental skills to connect you to others



### Progress Testing

Weekly recorded tests to track improvement



STUDY OPTIONS	LENGTH	START DATES	CORE CLASSES	TIMES	ELECTIVE CLASSES	ENTRY LEVEL
All Day English	5 or 10 weeks	Every 5 weeks For dates see below	20 hours Mon to Thurs	8.30 to 14.30 9.00 to 15.00	3 hours Friday 9.00 to 12.15	Pre-Intermediate to Advanced

2016 Start dates 04.01.16 • 08.02.16 • 14.03.16 • 18.04.16 • 23.05.16 • 27.06.16 • 01.08.16 • 05.09.16 • 10.10.16 • 14.11.16

# Your first step to academic success

 ABILITY  
English  
SYD-ILC-03





# English for

# Academic Purposes



## Expert skills training, success at university

Our EAP course prepares you for all the possible language challenges you will experience in a university or college. We thoroughly train you in the challenging skills of writing essays in English, giving presentations in English and understanding the expectations of an English-speaking college or university.

### COURSE FEATURES

- » Direct pathways to many colleges and universities (visit our website for the full list)
- » Strict academic teaching methods
- » Dedicated & experienced teachers
- » Strong training in the different genres of academic writing
- » Develop skills in analysing statistics and debating in English
- » Practical instruction on how to take notes in lectures
- » Learn to reference and paraphrase in English
- » Learn to give academic presentations in English
- » Weekly personalised feedback to aid academic progression

### Pronunciation

Pronunciation for presentations and group debates



### Academic Preparation

Academic Preparation for studying in an English-speaking education institution



### Speaking & Listening

Detailed academic presentation skills



### Grammar

Training in complex grammar structures



### Vocabulary

Intensive vocabulary training for academic life



### Writing & Reading

Intensive writing & reading academic training



### Intercultural Communication

What to expect in an Australian education institution



### Progress Testing

Weekly academic tests with personal feedback.



EAP LEVEL	STUDY OPTIONS	LENGTH	START DATES	CORE CLASSES	TIMES	ELECTIVE CLASSES	ENTRY LEVEL
EAP 2	All Day English	10 weeks	Every 5 weeks	20 hours Mon to Thurs	8.30 to 14.30 9.00 to 15.00	3 hours Friday 9.00 to 12.15	Intermediate (entry 5.0)
EAP 2	Evening English	10 weeks	04.01.16 08.02.16 14.03.16 18.04.16 23.05.16 27.06.16 01.08.16 05.09.16 10.10.16 14.11.16	20 hours Mon to Fri	17.00 to 21.30	Nil	Intermediate (entry 5.0)
EAP 3	All Day English	10 weeks	01.08.16 05.09.16 10.10.16 14.11.16	20 hours Mon to Thurs	8.30 to 14.30 9.00 to 15.00	3 hours Friday 9.00 to 12.15	Upper Intermediate (entry 5.5)
EAP 4	All Day English	10 weeks	18.04.16 10.10.16	20 hours Mon to Thurs	8.30 to 14.30 9.00 to 15.00	3 hours Friday 9.00 to 12.15	Advanced (entry 6.0)

**Write  
your global  
success  
story**



# FCE & CAE

# Cambridge

# Test Preparation



## Prove your English proficiency to the world

The Cambridge FCE or CAE test is recognised by some of the biggest multinational companies in the world. The test results are also accepted for university and immigration requirements in many countries. We have excellent teachers and years of experience getting students the scores they need.

A comprehensive course that will bring great improvements in all your English skills.

### COURSE FEATURES

- » Complete test training & detailed test tips
- » Personalised student feedback
- » Full practice tests weekly
- » Experienced Cambridge teachers
- » Closed classes working intensively together
- » We organise your test booking
- » Multimedia library access for self-study
- » Four course intakes per year
- » Cambridge certificates are valid for life

### Pronunciation

Pronunciation training for the Cambridge FCE & CAE speaking tests



### Speaking & Listening

Strong level of preparation & skills development for the Cambridge FCE & CAE speaking & listening tests



### Grammar

Training in complex grammar structures



### Vocabulary

Training in complex vocabulary needed for the Cambridge tests



### Writing & Reading

Preparation for the Cambridge FCE & CAE writing & reading tests



### Progress Testing

Weekly full Cambridge FCE & CAE practice tests with personalised feedback & detailed test-taking tips



STUDY OPTIONS	LENGTH	START DATES	CORE CLASSES	TIMES	ELECTIVE CLASSES	ENTRY LEVEL
All Day English	10 - 12 weeks	04.01.16 (10 weeks) 14.03.16 (12 weeks) 06.06.16 (10 weeks)	20 hours Mon to Thurs	8.30 to 14.30 9.00 to 15.00	3 hours Friday 9.00 to 12.15	Upper Intermediate to Advanced
Evening English*	10 - 12 weeks	05.09.16 (12 weeks)	20 hours Mon to Fri	17.00 to 21.30	Nil	Upper Intermediate to Advanced

\*Melbourne only FCE in the evening

CRICOS CODE: ENGLISH LANGUAGE PROGRAMS 076947J

Open the  
door to  
**your future**

---



# IELTS Test

# Preparation



## ABILITY helps you get the score you need

Your goal could be to study at a university in Australia or any other English-speaking country. Or your aim could be to apply for a work visa in an English-speaking country. This course fully prepares you for these goals and the IELTS test. Our expert teachers have the knowledge to get you the IELTS score you need.

### COURSE FEATURES

- » Prepares for both Academic & General IELTS tests
- » Complete test training in the writing, reading, listening & speaking test skills
- » Full practice tests weekly in real test conditions
- » Comprehensive vocabulary training
- » Detailed test tips
- » Personalised student feedback
- » Help with your personal test weaknesses
- » Day or evening courses

#### Pronunciation

Pronunciation training for the IELTS speaking test



#### Academic Preparation

Academic skills needed to excel in the IELTS test



#### Speaking & Listening

Skills development for the IELTS speaking & listening test



#### Grammar

Training in complex grammar structures needed for the IELTS test



#### Vocabulary

Training in complex vocabulary needed for the IELTS test



#### Writing & Reading

Intensive writing skills development & error correction



#### Progress Testing

Weekly full IELTS practice tests with personalised feedback & detailed test-taking tips



STUDY OPTIONS	LENGTH	START DATES	CORE CLASSES	TIMES	ELECTIVE CLASSES	ENTRY LEVEL
All Day English	1 - 14 weeks	Any Monday	20 hours Mon to Thurs	8.30 to 14.30 9.00 to 15.00	3 hours Friday 9.00 to 12.15	Upper Intermediate to Advanced
Evening English	1 - 14 weeks	Any Monday	20 hours Mon to Fri	17.00 to 21.30	Nil	Upper Intermediate to Advanced
IELTS Part-time (Evening only)	1 - 14 weeks	Any week night	Min 4 hours, max 10 hours, min 2 weeks Mon to Fri	19.30 to 21.30	Nil	Upper Intermediate to Advanced

Target your needs,  
build your **skills**

---



# Friday

# Electives

Every Friday, ABILITY English has 3 hours of optional classes in our Friday Electives program to support your English studies. We offer a variety of classes that you can choose each week to

personalise your English development. The Friday Electives are a mix of social and serious study. These classes are optional and flexible to best suit your needs and lifestyle.

## Music & Listening



Learn English by listening to music and practising vocabulary through song and rhythm.

## Writing Workshops



Learn what to write and how to write it for a variety of contexts.

## IELTS & Cambridge Test Practice Exams



These are 3-hour practice tests the same as the real test, with the same time pressure and intensity as you will experience on your test day.

After each test our teachers give you detailed personal feedback so you can overcome your problems very quickly.

## Pronunciation



Improve your pronunciation and build your confidence through interactive activities and detailed error correction.

## DVD Club



Watch movies in English and train your listening towards English sounds and accents.

## Conversation Club



Improve your speaking and listening in a vibrant social atmosphere.

## Vocabulary for Real Life



In this class we give you the tools to be understood on the street and in everyday life in Australia.

## Excursions



Visit new and exciting places around the city with an experienced teacher answering all your questions in English.

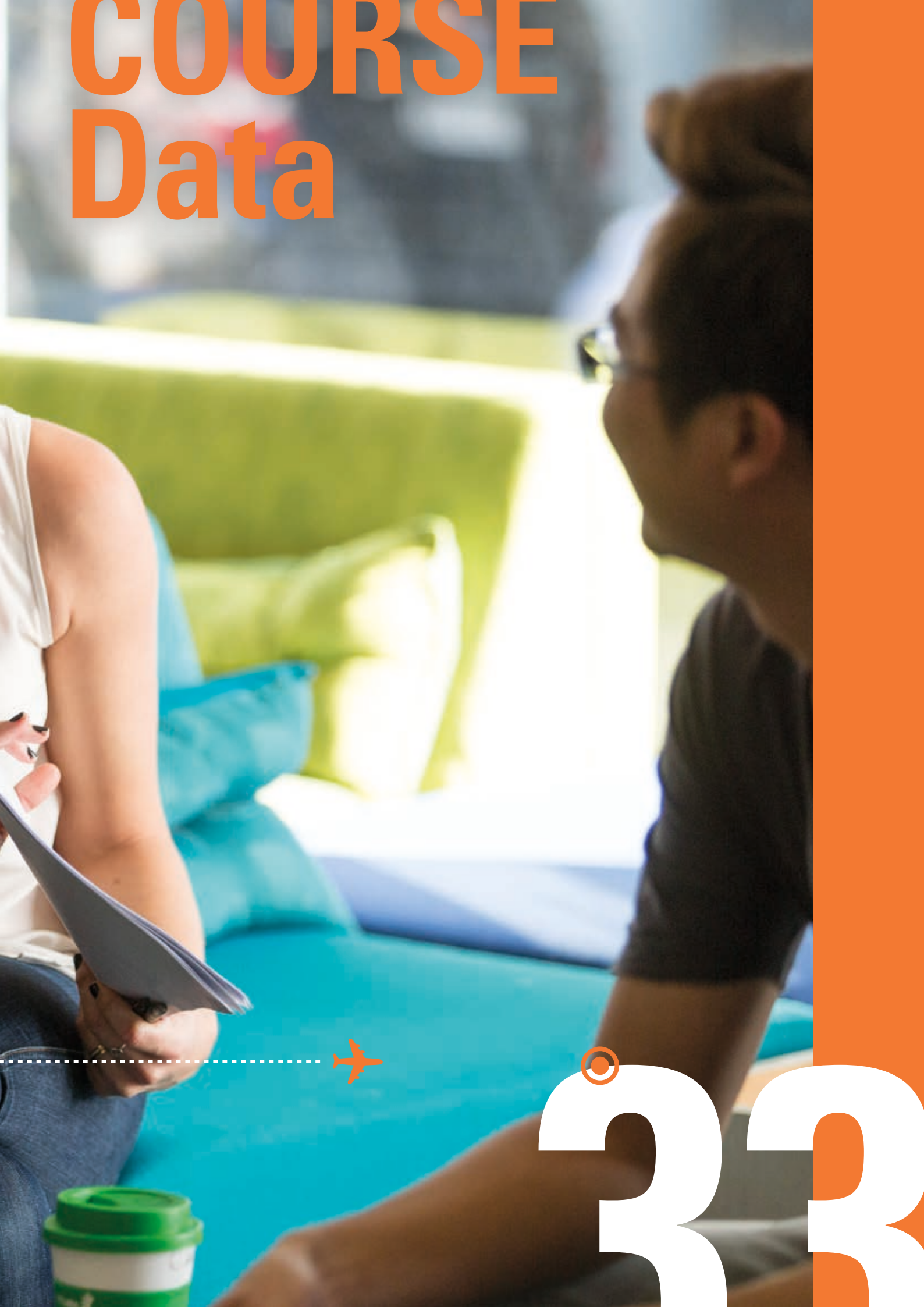
NB: Friday Electives are subject to change and are available only to students who have enrolled in All Day English courses.



**Refine your goals  
then change  
your course  
quickly & easily**




# COURSE Data



33

# 6 timetable **choices** for your personal study experience

All Day English 	Evening English 	Morning English 	Afternoon English 
General English	General English	General English	General English
General English Plus	General English Plus Check website for levels	General English Plus	
Survivor English	IELTS Test Preparation		
Pronunciation & Fluency	English for Academic Purposes (EAP 2 only)		
English for Academic Purposes (EAP)	FCE Preparation		
FCE & CAE Cambridge Test Preparation	CAE Preparation (Sydney only)		
IELTS Test Preparation			



# Flexible

# Study Options

## All Day English

- » Easy to work in the evening or Fridays
- » All visa types
- » 20 hours weekly core study from Monday to Thursday
- » 3 hours weekly of optional classes Friday morning

## Evening English

- » Classes start conveniently at 17:00 for day workers
- » All visa types
- » 20 hours weekly core study from Monday to Friday

---

## Morning English

- » Lots of free time to work or sight-see
- » 3.5 hours a day of all language skills
- » 14 hours a week Monday to Thursday mornings
- » Study only until lunch time

*Note: Student visa holders cannot do Morning English as their main form of study*

## Afternoon English

- » Good for extra speaking practise while studying at university
- » Lots of free time to work, study or sight-see
- » 1.5 hours a day of only Speaking & Listening
- » 6 hours a week Monday to Thursday afternoon

*Note: Student visa holders cannot do Afternoon English as their main form of study*

---

## Private English

- » Premium option for personalised learning with language training experts
- » Private classes tailored to personal language-learning needs
- » Classes are scheduled around personal preferences

*Note: Student visa holders cannot do Private English as their main form of study*

## Part-time IELTS

- » From 4 to 10 hours weekly
- » Different class choices from Monday to Friday
- » Each night of the week is a different skill
- » You choose what you need to practice
- » 19:30 to 21:30, minimum 4 hours per week, maximum 10 hours per week, minimum 2 weeks enrolment

*Note: Student visa holders cannot do Part-time IELTS as their main form of study*

A photograph of a classroom or study area. In the foreground, a student's hands are visible, holding a pink highlighter and writing on a notebook. In the middle ground, a young woman with dark hair tied back, wearing a blue denim shirt, is sitting at a white desk, looking down at an open book and holding a red pen. To her left, another student is partially visible, looking towards the book. The background shows a large window with a view of trees and a building. The overall atmosphere is focused and studious.

**As your English  
improves, your  
options **expand****



# Easy Course

## Changes

At ABILITY English we have different course options to help you focus on your personal learning goals

At ABILITY we help you decide what is best for you and make sure your course changes are quick and easy.

- » Quick & easy changes between courses
- » Academic counselling to help plan your future
- » Course options to build skills for specific goals

Course Name	Beginner IELTS 0-2.0	Elementary IELTS 2.0-3.0	Pre Intermediate IELTS 3.0-4.0	Intermediate IELTS 4.0-5.0	Upper Intermediate IELTS 5.0-6.0	Advanced IELTS 6.0+
General English	✓	✓	✓	✓	✓	✓
General English Plus				✓	✓	
Survivor English					✓	✓
Pronunciation & Fluency			✓	✓	✓	✓
EAP					✓	✓
FCE					✓	
CAE						✓
IELTS					✓	✓

# Balanced Timetables – develop **all** your English skills



# Balanced Timetables

At ABILITY English we teach you about a new area of the English language every week

We work with you all week to make sure that you understand everything and that you are confident to use the language when you are speaking, listening, reading and writing.

Each Monday while your new classmates are having orientation, we test you to check that you have fully understood and remembered everything you were taught in the previous week.

Unique to ABILITY English timetables is the high amount of speaking, intercultural communication and pronunciation training in every course.

## Sample timetable

English Day Classes	Monday	Tuesday	Wednesday	Thursday	Friday
Morning session 1 8:30-10:00 or 9:00-10:15	Weekly Test	Grammar	Vocabulary & Language Use	Listening	Study Choices
Morning session 2 10:30-12:30 or 10:45-12:45	Topic Introduction	Reading	Grammar	Writing	Study Choices
Afternoon session 3 13.00 to 14.30 or 13.30 to 15.00	Speaking & Listening	Pronunciation & Speaking	Intercultural Communication	Vocabulary & Speaking	Nil

English Evening Classes	Monday	Tuesday	Wednesday	Thursday	Friday
Evening session 1 17.00 to 19.00	Weekly Test	Grammar & Reading	Vocabulary & Language Use	Grammar & Writing	Listening
Evening session 2 19.30 to 21.30	Topic Introduction	Speaking & Listening	Pronunciation & Speaking	Intercultural Communication	Vocabulary & Speaking



**Don't just  
learn about  
other cultures,  
learn with  
other cultures**

---



# SUPPORT Team



41

ABILITY English is famous  
for attracting students from  
a wide range of countries.  
Because you will be studying  
with students from every  
continent you will build  
a diverse network of  
international friends, future  
colleagues and contacts.



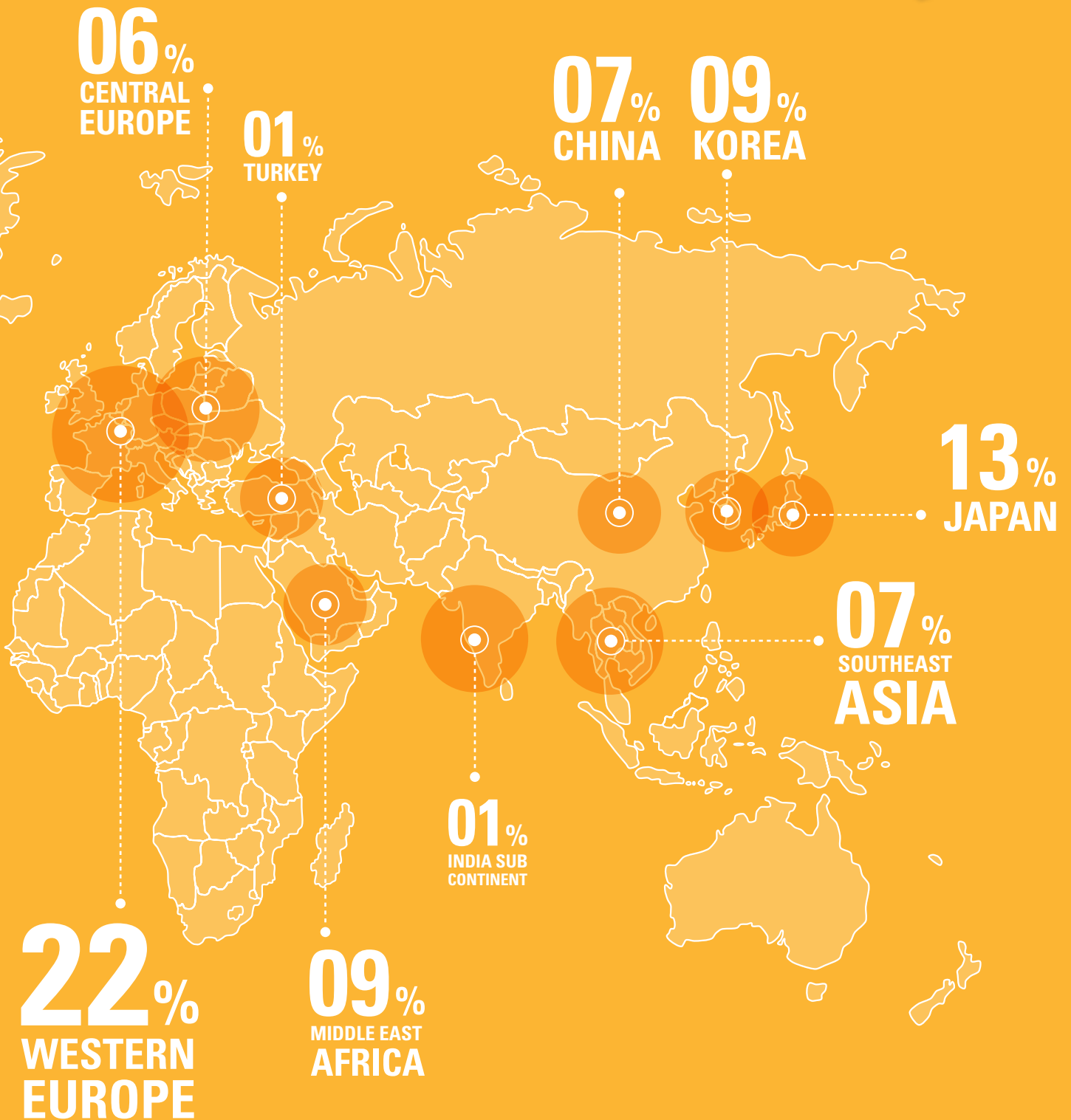
**Learn with your  
new friends from  
around the world,  
your international  
ABILITY family**

---



# Diverse

# Nationalities



**Our expert  
teachers  
love teaching  
and never stop  
learning**

---



# Brilliant Teachers

## Teacher Professional Development at ABILITY

Twice a year, we have a Teacher Professional Development day where our teachers are given training in a range of English language teaching areas. We do this so you get the best theoretical and practical knowledge in all your lessons. When we invest in our teachers, we invest in you.

### **ACADEMIC PREPARATION SPECIALISTS**

We look for highly competent, specialised teachers with:

- » High-level qualifications
- » Experience as IELTS examiners
- » Experience as Cambridge examiners
- » Teachers who have published academic papers about English language acquisition
- » Teachers who have presented at industry conferences

### **CONVERSATION & COMMUNICATION EXPERTS**

We have invested heavily in developing a unique method of pronunciation and speaking training based on the latest English language teaching academic research. Because of this, our teachers are:

- » Highly skilled pronunciation experts
- » Trainers of other teaching professionals in the industry
- » Able to increase greatly your individual error awareness



“As a professional in the ESL industry, ABILITY English has provided me with numerous opportunities in professional and curriculum development, and invaluable support and encouragement in my development as an educator. This has led to being invited to present at national conferences around Australia.” **Dafne Araya Campos**

**ABILITY English teacher, Bachelor of Languages, Masters of Applied Linguistics (TESOL) & CELTA**

A woman with shoulder-length brown hair, wearing a white lace top, is smiling and looking towards the right. She is in a meeting with other people whose faces are partially visible in the foreground. The background shows a modern office environment with a blue wall and a glass partition.

**ABILITY** English  
staff recognised  
for **quality &**  
**expertise**



# Industry Awards and Contributions

## Industry Awards and Presentations by ABILITY English Academic Staff

The staff at ABILITY English have received awards and been invited to present at many key English language teaching events and conferences.

It is great for us to see the excellence of our staff being recognised and contributing to English language teaching expertise worldwide.



**English Australia  
ETS TOEFL® Award for  
Innovation in ELICOS**

---

### **2015 SHORTLISTED ENGLISH LANGUAGE SCHOOL – SOUTHERN HEMISPHERE**

*Study Travel Magazine Star Awards*

### **2014 INDUSTRY PRESENTATIONS**

**“Pronunciation Teacher Training Workshops”**  
Sydney, Australia

**“Assessment Tools that Improve Feedback to Students”**  
CamTESOL Conference, Cambodia

### **2013 INDUSTRY PRESENTATIONS**

**“Taking the Myth out of Teaching Pronunciation”**  
English Australia Conference 2013,  
Perth, Australia

**“Teaching Pronunciation”**  
Communities of Practice Professional  
Development Festival, Sydney, Australia

### **2012 INDUSTRY PRESENTATIONS**


**“Teacher Training for Thai English and VET Teachers”**  
English Language Symposium, Bangkok, Thailand

**“Becoming a Mimic: Getting the Most out of Pronunciation”**  
English Australia Conference, Sydney, Australia

**“Innovative Approaches to Teaching General English”**  
NEAS Conference, Sydney, Australia

### **2011 INDUSTRY PRESENTATIONS**

**“Pronunciation & Fluency in English: Giving your Students a Voice”**  
ACPET Conference, Brisbane, Australia



**We look after  
your worries,  
you look after  
your studies**



# Student

# Services

## Studying in another country is exciting because everything is so new

Because it is new it can also bring new challenges. When you experience these challenges we are there to help you succeed.

### **STUDENT SUPPORT**

We have friendly Student Services staff who are ready to help you with everything you need. They are available to help you with:

- » Understanding life in Australia
- » Booking student activities
- » Medical service information
- » Navigating a new city
- » Problems and complaints
- » Information about weekend activities
- » Help with housing
- » Access to student counselling

### **BEGINNERS SUPPORT CLUB**

When you first start learning a language it can be really difficult. If you are a beginner to English, we give you extra support each week at no extra cost. You can come to our Beginners Support Club and a teacher will give you personal attention and answer any of your questions, so that you can improve faster.

### **STUDY ASSISTANCE**

At ABILITY English we take your English improvement very seriously. That is why we have an academic counselling and education planning session every week. The Academic Manager will meet you and help you plan your personal study goals. You, the Academic Manager and your teacher then work together to make sure you stay on track.

### **HELPING YOU SPEAK ENGLISH**

We have a new member of our ABILITY staff – a big Australian Emu bird to help remind you to always speak English at our colleges.

The English Only Emu is in the college every week to encourage you to use English, not your first language, while on campus. If you do this, your English language skills will improve faster.

### **POSITIVE APPROACH**

The English Only Emu is a humorous and positive way to reward you for communicating in English. When the English Only Emu sees you using English out of class they will:

- » Celebrate your dedication to your English training by giving you yummy chocolates
- » Put a photo of you on our 'Wall of Fame'

**Your home  
away from  
home**



# Social Activities

To help you have a good time in Sydney and Melbourne we organise regular social events with teachers and staff to get everybody together; including parties, sport and movies. We also offer a booking service for weekend trips to local sights.

## EVERY WEEK

We have fitness and relaxation activities in the afternoon with a teacher to have some fun together.

## EVERY MONTH

We have a student party at a local venue with different themes.

## EVERY 3 MONTHS

We have class end-of-term picnics and a social event with the whole school, such as boat cruises, film nights and our famous annual culture day.

**See the photos of our latest parties on Facebook:**

[www.facebook.com/abilityenglish](http://www.facebook.com/abilityenglish)

**Check our blog written by our students:**

[www.blog.ability.edu.au](http://www.blog.ability.edu.au)

# Job Club

Every week our Job Club meets to support you while you work in Australia. We assist you to:

- » Write your CV
- » Prepare for a job interview
- » Find the best places to look for work
- » Understand Australian taxation
- » Understand your work rights
- » Understand your visa work conditions



"I went to ABILITY to look for staff that could work in a very multicultural team. Lubo Flimel had the perfect skills I was looking for, and I soon made him a manager because of these skills. The company sponsored him and he has just received his permanent residency. I'm proud to have Lubo on my team." **Victoria Cornaga, Head Chef Yalla Foods**



**Different people,  
different lifestyles,  
different housing  
solutions**



# Accommodation

When you travel to another country to study, it's great to have local people you can trust helping you organise your life

When you book your course with us we can also arrange your accommodation.

## HOMESTAY ACCOMMODATION

- » Stay with a local English-speaking family
- » Learn about Australian culture
- » Practise your English day and night
- » Mon-Fri: breakfast and dinner provided
- » Weekends: breakfast, lunch and dinner provided
- » All accommodation less than 50 minutes from ABILITY campus by public transport
- » Great option for younger students

## INDEPENDENT ACCOMMODATION

- » Different housing options for different prices
- » Student housing: Housing designed especially for students, with internet, desk and study area
- » Backpackers: Housing designed especially for travellers - cheap, good locations, very social environment
- » Lodges/Guest houses: Independent accommodation within a big house - your own room, some cooking facilities, like a home

If you are interested in our accommodation choices and conditions go to our website [www.ability.edu.au](http://www.ability.edu.au) or contact us.



"I enjoyed my experience staying with an Australian family. My host family made me feel very comfortable and I felt like I was at my own home. You feel very welcome and a part of the family. I never felt homesick." **Yesenia, Venezuela**

# Say **HELLO** to the **future** You

contact us

[info@ability.edu.au](mailto:info@ability.edu.au)

[www.ability.edu.au](http://www.ability.edu.au)



## Sydney City Campus

10 Quay Street  
Sydney, NSW 2000, Australia  
Phone +612 9211 4161  
Fax +612 9211 4899



## Melbourne City Campus

Level 3, 55 Swanston Street  
Melbourne, VIC 3000, Australia  
Phone +613 9639 0000  
Fax: +613 9650 6476

ABN 60 075 234 007 | Ability Education Pty Ltd trading as ABILITY English | CRICOS Provider Code: 01530K  
7893\_Ability\_1215