



*Tompkins Educational Group*

**Portsmouth**  
LANGUAGE COLLEGE

**Southampton**  
LANGUAGE COLLEGE

**Chichester**  
LANGUAGE COLLEGE

**Winchester**  
LANGUAGE COLLEGE

**Bristol**  
LANGUAGE COLLEGE

# ENGLISH SPANISH & FRENCH COURSES IN THE UK

Daytime and Evening  
Full or Part-Time | 2015



**FREE**  
TEG Social  
Events App



Accredited by the  
**BRITISH COUNCIL**  
for the teaching  
of English



UNIVERSITY of CAMBRIDGE  
ESOL Examinations  
Authorised Centre

# Trust your language course with TEG –

- Experienced
- Professional
- Inspirational

The Tompkins Educational Group (TEG) is dedicated to teaching English and other languages in a friendly and supportive environment. Our locations are chosen especially for their popularity and individual culture. All of our branches are great places to study with specific positive points to each college and city.

*TEG was established in 2007 with the aim of providing top quality language courses at competitive prices. After 15 years of being a teacher, I realised that students learn languages best in multinational colleges teaching enjoyable, yet clearly structured lessons. We are also very aware of the importance of the social aspect to learning. As a result, each branch has a constant leisure programme that features trips and various social events.*

*Our courses run in the daytime and evenings throughout the year. You can start a course almost any time you wish. We aim to be flexible so that our courses can suit your requirements, whether you need an intensive course or a part-time one.*

*We also arrange courses for groups of students who require individual study and leisure programmes. We also have a growing number of homestay families available in each city for your accommodation if required.*

*As you probably know, a second language is essential these days in the global economy. All of our branches have the same high standard of teaching and service, so whichever one you choose, join us soon and get the language skills you need for your future.*

*I look forward to meeting you.*

*Best wishes,*

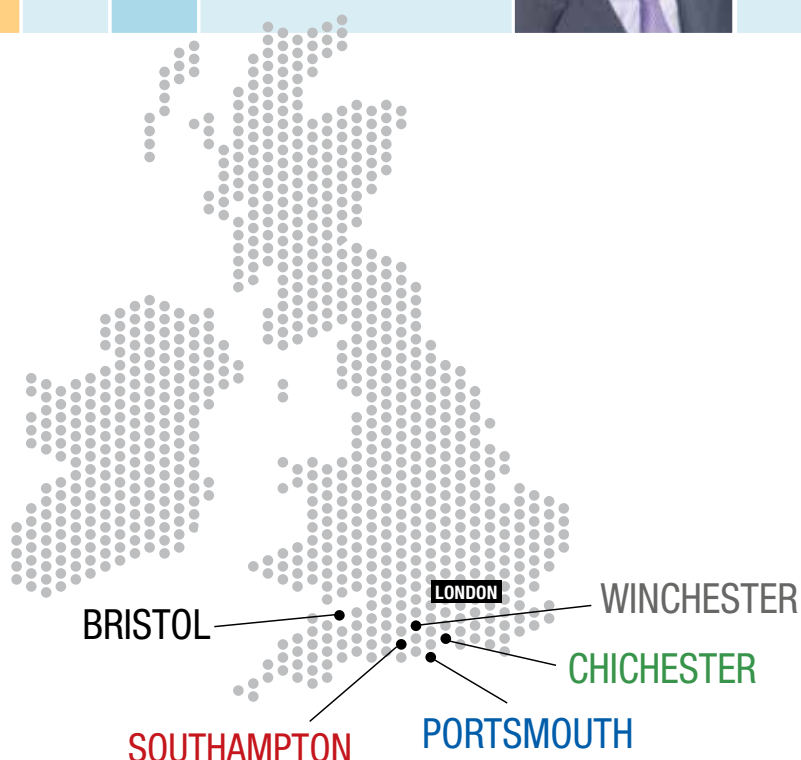
*David Tompkins*

Director & Founder, TEG



## Our branches in Bristol, Southampton, Winchester, Portsmouth and Chichester are all connected by train.

Each of our city locations has excellent road and rail links to London and other major British cities and airports.



# Portsmouth Language College

[www.portsmouthlanguagecollege.co.uk](http://www.portsmouthlanguagecollege.co.uk)



- Popular student city on the coast
- Large branch, busy all year round
- Student area and roof terrace
- Located in the city centre

Portsmouth Language College was the first TEG branch to be established. It runs a wide range of courses for individual students and can also accommodate large groups. The building is spacious and well-equipped with modern classrooms and student facilities. The College is ideally located opposite the Cascades shopping mall, close to all major bus routes and Portsmouth & Southsea train station. We are also very near Victoria Park.

Portsmouth is a great place to study English. It has a large international student population and is popular with young and older people. The city is a very easy place to get around as it is on a peninsula. As well as being a tourist destination, the city is one of the main bases of the Royal Navy. Portsmouth is home to Admiral Nelson's famous ship HMS Victory as well as the Spinnaker Tower and the shopping complex of Gunwharf Quays. There are direct ferry and hovercraft connections to the Isle of Wight, Spain and France.





**Southampton**  
**LANGUAGE COLLEGE**

Part of the Tompkins Educational Group

# Southampton Language College

[www.southamptonlanguagecollege.co.uk](http://www.southamptonlanguagecollege.co.uk)



- Famous port city
- Excellent shopping facilities
- Close to the New Forest and other attractions
- University city with great nightlife

This very popular and attractive branch is located in the centre of Southampton and overlooks the central park. Our building has four floors and includes a number of modern classrooms, 2 student rooms, a place for private study and an IT area. There are a number of cafes, restaurants and bars close by.

Southampton Language College is only a few minutes' walk from the excellent West Quay shopping centre and Southampton Central station. It is close to the New Forest and only a short ferry ride to the beautiful Isle of Wight. The city is a commercial port, but is also the destination of many ocean cruise liners. Southampton also has an international airport.



# Chichester Language College

[www.chichesterlanguagecollege.co.uk](http://www.chichesterlanguagecollege.co.uk)



- Charming Cathedral city
- Very friendly branch with a family atmosphere
- Perfect place to immerse yourself in the English language

Our impressive Chichester branch is very conveniently located in the heart of a charming cathedral city in West Sussex. It has comfortable classrooms as well as a large student lounge, IT area and outside area facing the beautiful Priory Park. Chichester is a very safe, very English city with a small harbour. The College has a particularly friendly atmosphere that you will love being a part of.

Chichester is a pleasant, small city with many places of interest within the centre and surrounding area. The city is very welcoming and perfect for anyone who wants to learn English. The traditional seaside towns of Bognor Regis and Littlehampton are a short bus or train journey away. The popular city of Brighton is less than an hour away by train.





**Winchester**  
**LANGUAGE COLLEGE**

Part of the Tompkins Educational Group

# Winchester Language College

[www.winchesterlanguagecollege.co.uk](http://www.winchesterlanguagecollege.co.uk)



- Ancient capital city of England
- Beautiful centre and surrounding countryside
- Small, personable college and very easy to make friends

Our Winchester branch is bright, comfortable and situated in the centre of the city on the main road to Southampton. Winchester has always been highly popular with students due to its excellent shops, restaurants and nightlife – all set in the pleasant Hampshire countryside.

The pretty and historic city of Winchester is a wonderful place to learn a language. Not only does it have the longest cathedral in England, but it has King Arthur's famous Round Table in the Great Hall, as well as many other fascinating attractions. Winchester is also England's Christmas capital but is a joy to visit at any time of year.



# Bristol Language College

[www.bristollanguagecollege.co.uk](http://www.bristollanguagecollege.co.uk)



- Lively, exciting city in the south-west of England
- Building located one minute's walk from the extensive shopping centre
- Large classrooms and spacious student areas

Our newest branch is in the heart of the well-known (and now fashionable) port city of Bristol. If you are looking for a fun English city with many places of interest, then Bristol is one of the best places to study.

Bristol Language College is situated in Pritchard Street - near the green Portland Square on one side and Cabot Circus shopping mall on the other. Our building has 5 floors and a number of very large classrooms, as well as a well-equipped student kitchen and comfortable lounge.

Bristol has a large, cosmopolitan centre with many cafes, bars and restaurants. The city's transport links to London, Wales and the rest of England are superb. There is also an international airport. The city has many tourist attractions in the surrounding area including the Clifton suspension bridge, Cheddar Gorge and the seaside resort of Weston-Super-Mare.



# Courses available at our Colleges

## General English in the Daytime

These are the most popular courses in our Colleges and usually take place in the mornings from 09.30-12.45 throughout the year. Typically, we have 5 or 6 levels of General English ranging from **Elementary (A1\*)** to **Advanced (C1\*)**. We can also open **Proficiency (C2\*)** if there is sufficient demand. The classes contain a necessary mixture of speaking, listening, vocabulary, grammar, reading and writing. They are designed to be effective and enjoyable. We will test your level when you arrive and place you in the appropriate class for your ability. Students progress to a higher level after passing a test at set times throughout the year or if they can prove adequate progress.



General English is the most popular course and generally takes place in the mornings

## Extra English Skills hours

Many students choose to do one or two of our extra Skills hours, as they represent good value-for-money, enable you to focus on specific areas of English and they help to maximise your study time while in the UK.



**Here are the available hours:**

### 1. Communication Skills (Monday - Friday 13.00-14.00).

This hour is centred around a different, interesting topic area every day.

It could be focused on vocabulary, speaking, extra reading/listening or debate. The hour is designed to be relevant to you the learner and involves plenty of communicative practice with English.

**2. Examination Skills (Mon-Fri 14.30-15.30).** This class is for students who have the aim to pass an exam (such as PET, FCE, CAE, CPE or IELTS). The class focuses on practice tests, as well as the teacher giving advice and extra assistance and to help you get the result you need.

## IELTS Daytime and Evening Courses



The International English Language Teaching System is the typical route for overseas student to enter a UK or international university. The courses we offer are normally for students of at least a strong intermediate level (B1/B2\*) and contain examination training designed to help students achieve as high a grade as possible.

Our IELTS courses also have an element of General English as this is still needed at university and non-academic life.

Our IELTS courses run in the daytime (Mondays to Fridays) and Monday & Wednesday evenings all year round depending on the college.

**Please contact a TEG branch for availability.**

## FCE, CAE and CPE Evening Courses

The Cambridge **First Certificate (FCE)**, **Cambridge Advanced (CAE)** and **Cambridge Proficiency (CPE)** examinations normally run for 2 evenings per week (Mondays & Wednesdays) from 18.00-21.00. Each exam contains a mixture of exam training and practice as well as a strong element of General English. The classes are designed to be exam-focused, but also enjoyable. These evening courses run from January to March (12 weeks); April to June (11 weeks); July to August (8 weeks) and September to December (12 weeks).

Our **Portsmouth** branch is an approved **Cambridge Examination Centre** (Centre No. 00777)



UNIVERSITY of CAMBRIDGE  
ESOL Examinations  
Authorised Centre

## General English in the Evenings

For Elementary to Intermediate students who may not be ready to take one of our Cambridge FCE, CAE or CPE evening courses, we frequently run General English classes in the evening. These feature the same balance of vocabulary, grammar, speaking, reading, listening and writing as our daily morning General English classes, but run 2 evenings a week (Monday & Wednesdays 18.00-21.00).

## Junior Courses



For children aged 10-15, we run special Junior Courses in the summer holidays (Late June to the end of August). These courses are designed to be very enjoyable for children with lots of language learning fun activities and a focus on natural communication, rather than too much grammar.

All our Colleges provide a safe and caring environment for your children and our Teachers are specially chosen for their ability and experience in working with juniors. All staff in TEG who will be interacting with children are checked by the Disclosure and Barring Service (DBS) to ensure security.



## Group Courses

Whether you represent a school or university that wants to arrange a study trip or a company that wants to send a group of your employees

to improve their practical language skills, we can provide a quote for a group course. The website of each branch contains more details of services and prices on the Group Bookings page. We can design a package including language course, accommodation, leisure programme and airport transfers.

Typically, our branches accept groups of 4 to 40 students at any one time (subject to availability). We can provide excellent discounts on courses and other services for sending a group to any of our branches.



## Other Languages

TEG branches frequently run courses in other popular languages such as German, Italian and Portuguese if there are sufficient student numbers. We can also arrange Private lessons in almost any other language you require.

**Please e-mail or phone us for details of any of the above courses and start dates.**



## Other English Courses

Our Language Colleges are very flexible in the courses we offer. We are able to arrange Business

English courses on demand as well as English for Specific Purposes. If you want to improve as quickly as possible, you may feel that you would benefit from a Private English Course. We will find out your requirements for the course you choose and match you with the most suitable teacher.

These classes are run according to demand. However, we only require a minimum of 4 students to start a course – providing we have classrooms and teaching staff available.



## TEG branches frequently run courses in other popular languages such as German, Italian and Portuguese

- Courses subject to change and availability – Please check with the college you want to study in
- Enrolment is ongoing, so you can join a course at almost anytime you want
- During busy periods, we often run general English classes in the afternoons from 14.15-17.30
- English language daytime courses are 15, 20 or 25 hours per week. Each level lasts approximately 3 months. Part-time study is available and these students may join full-time classes
- For full TEG terms & conditions, please see our website

## Our French and Spanish evening courses run 4 times a year

## French & Spanish Courses

Our French and Spanish evening courses run 4 times a year. The classes are usually very small and with a native speaker of the language. These enjoyable and interactive classes are ideal for those who want to learn French and Spanish as a hobby, for travel or for business. The focus of the classes are on communication and you can join as a Beginner, Elementary, Intermediate or Advanced level (Higher levels are subject to demand). Classes are held on a Monday and Wednesday, for 2 hours per week.

Spanish & French courses start in January, April, July or September and run for an average of 10 weeks, depending on the time of year.

\* Common European Framework for Languages:

- A1 Elementary
- A2 Pre-intermediate/KET
- B1 Intermediate/PET
- B2 Upper-intermediate/FCE
- C1 Advanced/CAE
- C2 Proficiency/CPE

Accredited by the  
**BRITISH COUNCIL**  
for the teaching  
of English

**ENGLISHUK**  
member

# Other reasons to study at a Tompkins Educational Group College

- Maximum class size of 14 students (typically around 8 per class)
- Dedicated, professional teachers – chosen for their enthusiasm and love of teaching
- Enjoyable, varied lessons with a mixture of modern and traditional methods of teaching
- Excellent, well-maintained buildings, with constant improvement in facilities available
- **All the things TEG offers for FREE;** Placement test; Student card; End of Course certificate; Personalised report from your teacher; Use of book and DVD libraries; Internet and Wi-Fi access; first coursebook on Enrolment Fee, and tea and coffee!
- Mixed nationalities in our Colleges from all over the world
- Flexible study times
- Regular, fun social programme
- Helpful and friendly administrative staff
- Our Portsmouth branch is an approved examination centre for many Cambridge ESOL exams and we offer discounts on exam fees for TEG students.



## Internationally recognised examinations available & fees



UNIVERSITY of CAMBRIDGE  
ESOL Examinations  
Authorised Centre

**IELTS™**  
English for International Opportunity

CEFR*		TEG Tompkins Educational Group Students	External Students
<b>Cambridge ESOL Exams – General English</b>			
C2	Cambridge Proficiency (CPE)	£120	£145
C1	Cambridge Advanced (CAE)	£115	£140
B2	First Certificate (FCE) (Adults & For Schools versions)	£110	£135
B1	Cambridge Preliminary (PET) (Adults & For Schools versions)	£65	£95
A2	Cambridge Key (KET) (Adults & For Schools versions)	£60	£80
<b>Cambridge ESOL Exams – Business English</b>			
C1	BEC - Higher	£120	£145
B2	BEC – Vantage	£110	£135
B1	BEC – Preliminary	£65	£95
<b>International English Language Testing System (IELTS)**</b>			
B1-C2	IELTS Academic or General	£155	£155
<b>Diploma of English Language Teaching to Adults (DELTA)</b>			
-	Module One	£150	£150

\* Common European Framework of Reference

\*\* All exams taken at Portsmouth Language College except for IELTS

## DAYTIME COURSES (Mon-Fri)

General English		
09.30-12.45	Elementary (A1/A2)	•
09.30-12.45	Pre-intermediate (A2)	•
09.30-12.45	Intermediate (B1)	•
09.30-12.45	Upper-intermediate (B2)	•
09.30-12.45	Advanced (C1)	•
09.30-12.45	Proficiency (C2)	Available on demand
Cambridge ESOL Examination Preparation		
09.30-12.45	IELTS	•
English Skills hours		
13.00-14.00	Communication Skills (A2 to C1)	•
14.30-15.30	Examination Skills (A2 to C2)	•

## EVENING COURSES (Mon & Weds)


General English		
18.00-21.00	Elementary (A1/A2)	•
18.00-21.00	Intermediate (B1)	•
Cambridge ESOL Examination Preparation		
18.00-21.00	FCE (B2)	•
18.00-21.00	CAE (C1)	•
18.00-21.00	CPE (C2)	•
18.00-21.00	IELTS (B1-C1)	•
Other Languages - For times and availability, please contact a TEG branch		
	French (Beginners)	•
	French (Elementary)	•
	French (Intermediate)	•
	Spanish (Beginners)	•
	Spanish (Elementary)	•
	Spanish (Intermediate)	•
	Italian (Beginners)	•
	German (Beginners)	•
Other Courses		
Times on demand	Private classes (1 to 1 or private groups)	•
Times on demand	Business Courses	Available on demand
Times on demand	Junior English Courses (Ages 10-15)	Available on demand



# TEG Course Pricelist 2015

## DAYTIME COURSES - per week

## EVENING COURSES - per week

	25 hours per week	20 hours per week	15 hours per week	5.5 hours per week	SPANISH OR FRENCH 2 hours per week
	• General English + Communication Skills + Examination Skills 09.30-15.30 Mon-Fri	• General English + Communication Skills OR Examination Skills 09.30-14.00/15.30 Mon-Fri	• General English (Adult class or Juniors) • IELTS 09.30-12.45 Mon-Fri	• FCE, CAE or CPE • IELTS • General English 18.00-21.00 Mon & Weds	Spanish or French 19.00-21.00 Mon & Weds 
1 week	£ 207	£ 177	£ 148	£ 58	£ 30
2 weeks	£ 400	£ 342	£ 284	£ 102	£ 50
3 weeks	£ 594	£ 509	£ 424	£ 145	£ 75
4 weeks	£ 791	£ 678	£ 566	£ 191	£ 90
5 weeks	£ 968	£ 831	£ 692	£ 223	£ 110
6 weeks	£ 1128	£ 967	£ 806	£ 254	£ 125
7 weeks	£ 1297	£ 1111	£ 926	£ 287	£ 139
8 weeks	£ 1469	£ 1258	£ 1048	£ 320	£ 150
9 weeks	£ 1616	£ 1385	£ 1153	£ 350	£ 165
10 weeks	£ 1758	£ 1507	£ 1257	£ 381	£ 175
11 weeks	£ 1893	£ 1623	£ 1352	£ 414	£ 185
12 weeks	£ 2031	£ 1741	£ 1451	£ 445	£ 195
13 weeks	£ 2185	£ 1873	£ 1561	£ 477	<p>£25 Enrolment Fee payable for new French &amp; Spanish course students (includes FREE French or Spanish Coursebook)</p>
14 weeks	£ 2339	£ 2006	£ 1672	£ 501	
15 weeks	£ 2494	£ 2138	£ 1782	£ 528	
16 weeks	£ 2650	£ 2271	£ 1892	£ 553	
17 weeks	£ 2796	£ 2397	£ 1998	£ 572	
18 weeks	£ 2942	£ 2522	£ 2102	£ 597	
19 weeks	£ 3089	£ 2648	£ 2207	£ 616	
20 weeks	£ 3238	£ 2775	£ 2312	£ 629	
21 weeks	£ 3400	£ 2914	£ 2428	£ 644	
22 weeks	£ 3560	£ 3051	£ 2543	£ 656	
23 weeks	£ 3721	£ 3190	£ 2659		
24 weeks	£ 3884	£ 3330	£ 2775		
25 weeks	£ 3994	£ 3423	£ 2852		
26 weeks	£ 4102	£ 3515	£ 2930		
27 weeks	£ 4211	£ 3609	£ 3006		
28 weeks	£ 4319	£ 3701	£ 3084		
29 weeks	£ 4425	£ 3793	£ 3161		
30 weeks	£ 4535	£ 3886	£ 3238		
31 weeks	£ 4639	£ 3976	£ 3314		
32 weeks	£ 4749	£ 4071	£ 3392		
33 weeks	£ 4855	£ 4162	£ 3468		
34 weeks	£ 4962	£ 4254	£ 3545		
35 weeks	£ 5072	£ 4347	£ 3623		
36 weeks	£ 5178	£ 4438	£ 3700		
37 weeks	£ 5288	£ 4533	£ 3777		
38 weeks	£ 5394	£ 4624	£ 3855		
39 weeks	£ 5503	£ 4717	£ 3930		
40 weeks	£ 5612	£ 4810	£ 4009		
41 weeks	£ 5720	£ 4902	£ 4085		
42 weeks	£ 5828	£ 4996	£ 4163		
43 weeks	£ 5934	£ 5087	£ 4240		
44 weeks	£ 6043	£ 5180	£ 4317		
45 weeks	£ 6112	£ 5240	£ 4366		
46 weeks	£ 6192	£ 5307	£ 4422		
47 weeks	£ 6263	£ 5368	£ 4473		
48 weeks	£ 6334	£ 5430	£ 4526		
49 weeks	£ 6410	£ 5495	£ 4580		
50 weeks	£ 6485	£ 5559	£ 4633		

## OTHER LANGUAGES AVAILABLE ON REQUEST

(Subject to availability)

- £60 Enrolment fee payable for all new English language students – includes first coursebook FREE  
(Subsequent coursebooks are charged at £30 – 1 needed every 3 months on average)

- Private Lessons available  
£30 per hour for first student  
£15 per hour for each additional student

- 3, 6, 9 or 12 hours a week study available – please ask for a price quote

- Courses subject to availability

OPTIONAL LEISURE PROGRAMME  
COSTS NOT INCLUDED

# Leisure Programmes at TEG Language Colleges

In our Colleges, we are particularly proud of our ongoing social programmes and many students have told us how much they enjoy it. We aim to hold either a social evening or day trip at least once a week and a lot more in the busy summer period. Typical social events include:

- Pub nights
- Parties (usually at Easter, Summer, Halloween & Christmas)
- Karaoke
- International Food Evenings
- Quiz nights
- Cinema club (usually mid-week afternoon)
- Bowling
- Summer Barbecue
- Sporting activities (including the Annual TEG Football Tournament)

For day trips (depending on position of the branch) we regularly visit well-known places such as Bath, Brighton, Oxford, Salisbury, Winchester, Isle of Wight, Weston-Super-Mare, Cardiff, The New Forest, Arundel, Weymouth, Bournemouth and, of course, London. You do not have to participate if you do not want to, but we recommend that you do. TEG strongly believes that learning a language is much easier when you are having fun.



## TEG Social App

Get full details of current social programme events for each branch on your Apple or Android Smartphone. Download 'TEGSocial' from your App store today!

## TEG Facebook Groups



Each TEG branch has a Facebook group which contains general information about the College and Social events. Just type in the full name of the TEG branch (e.g. Portsmouth Language College).



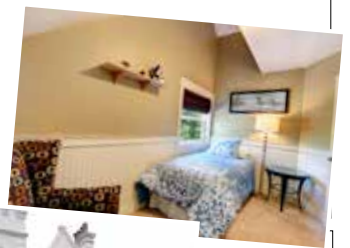
# Accommodation

We can offer an excellent accommodation service to all our students. Staying with a Host family is a fantastic way of experiencing British culture and gives students the chance to practise and to improve their English.

- All accommodation offered by our Colleges are inspected by us to ensure that we recommend comfortable and friendly places to stay.
- Most of our host families are within easy walking distance to the College. Some may require a short bus journey.

- We will make every possible effort to arrange an excellent Host family for you taking into account all the requirements you wish.
- If you prefer an alternative to a Host family, we can arrange excellent hotel or guest house accommodation within walking distance of the school.

<b>Accommodation Prices</b>		<b>Cost per week</b>
<b>Single room Homestay accommodation</b>		<b>1 person</b>
<b>Homestay accommodation with meals</b> Breakfast and Dinner from Monday to Friday and Breakfast, Lunch and Dinner on Saturday and Sunday + laundry + regular conversation		<b>For 18+ year olds:</b> £135 <b>For under 18 years old:</b> £150
<b>Self-catering accommodation (18+ only)</b> Self-catering + access to laundry facilities + conversation		£90 or £100 (depending on the branch)
<b>OPTIONAL Single en-suite bathroom weekly supplement</b> (subject to availability)		(+ £20)
<b>Shared room Homestay accommodation</b>		<b>2 people</b>
2 same-sex students in 1 room in single beds		
<b>Twin Homestay accommodation with meals</b> Breakfast and Dinner from Monday to Friday and Breakfast, Lunch and Dinner on Saturday and Sunday + laundry + regular conversation		<b>For 18+ year olds:</b> £230 <b>For under 18 years old:</b> £270
<b>Twin Self-catering Homestay accommodation (18+ only)</b> Self-catering + access to laundry facilities + conversation		£160 or £180 (depending on the branch)
<b>OPTIONAL Couple en-suite bathroom weekly supplement</b> (subject to availability)		(+ £30)
<ul style="list-style-type: none"> <li>• All homestay providers are inspected by the Tompkins Educational Group</li> <li>• Please book early before the busiest times (e.g. July and August)</li> <li>• 2 weeks' minimum accommodation must be paid in advance to secure a booking, Please try to give at least 2 weeks' notice for us to find you suitable accommodation</li> <li>• All accommodation is subject to availability</li> </ul>		



## Airport Transfers

We can arrange a driver to collect you from the airport and drive you directly to your homestay or to take you to the airport after your course has finished. Full details and prices are available on each branch's website.

# Students' views of our Colleges

WINCHESTER LANGUAGE COLLEGE

**Ana Beatriz from Brazil:**  
*The teachers are really good and explain absolutely anything you need and help with any doubts you have.*



BRISTOL LANGUAGE COLLEGE

**Rut from Spain:**  
*The teacher is really nice, that's why I'm here.*



CHICHESTER LANGUAGE COLLEGE

**Fon from Thailand:**  
*At first I was nervous to come here but when I came everyone was so friendly. CLC is not just a college but it is more than that. I am very happy to be here. I am so glad that I found this place.*



SOUTHAMPTON LANGUAGE COLLEGE

**Esra Senturk, Turkey:**  
*I am very lucky I chose SLC. Great mix of nationalities, very well-organised and teachers and students that are really kind. I am really enjoying my 'English life'!*



BRISTOL LANGUAGE COLLEGE

**Sarah from Spain:**  
*The school gave me a great opportunity to improve my English.*



WINCHESTER LANGUAGE COLLEGE

**Carmen from Spain:**  
*The lessons are very entertaining. It's one of the most exciting experiences I've ever had, and I recommend it to everyone. The teachers and the students are very nice and friendly people.*



PORTSMOUTH LANGUAGE COLLEGE

**Monica Costa from Portugal:**  
*I like Portsmouth Language College because it is very well organised and the teachers explain everything clearly and make it easy to understand. I love the teaching style!*



BRISTOL LANGUAGE COLLEGE

**Fabio from Italy:**  
*A comfortable building with excellent teachers. The methodology, lessons and resources are all really good.*



PORTSMOUTH LANGUAGE COLLEGE

**Ilke Polat – Germany:**  
*I'm really enjoying my classes at Portsmouth Language College. Since I've been here, I can really see how my English has improved.*



WINCHESTER LANGUAGE COLLEGE

**Olga from Spain:**  
*The teachers and staff are very friendly. You will feel at home in this school!*



SOUTHAMPTON LANGUAGE COLLEGE

**Ivonne Profeta from Venezuela:**  
*I have had an awesome experience at SLC. People here treat you like family, from the teachers to the Reception staff. I am so grateful for all the learning and for making me feel like I was at home!*



CHICHESTER LANGUAGE COLLEGE

**Gaudalupe from Spain:**  
*Chichester Language College is a good place to start an experience in England! You meet people from all over the world and also attend activities with them: cinema, trips parties... You will definitely have a wonderful time!*



SOUTHAMPTON LANGUAGE COLLEGE

**Woo Jin Patrick An from Korea:**  
*I studied English in SLC for 4 months. I improved my English dramatically in a short period of time and met friends from all over the world. I strongly recommend the college!*



PORTSMOUTH LANGUAGE COLLEGE

**Ali Thunayan from Saudi Arabia:**  
*Attending Portsmouth Language College has been an experience of a lifetime. I have not only enjoyed my classes, but this trip has built my personality and I'm so thankful to all the staff.*

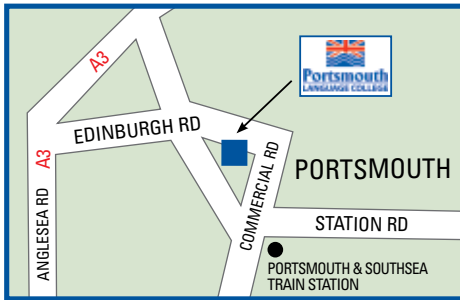


CHICHESTER LANGUAGE COLLEGE

**Ibrahim from Oman:**  
*Chichester Language College is excellent! I like the way the administration team deals with student enquires. They are always very helpful! I enjoy the classes, teachers and I have made many friends from all over the world!*



# Contact details



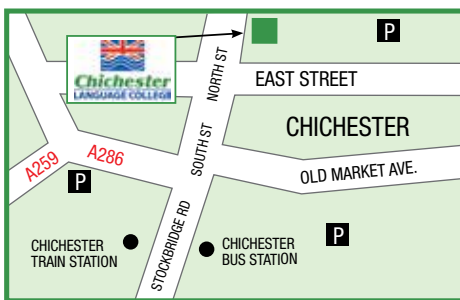
## Portsmouth LANGUAGE COLLEGE

7-9 Edinburgh Road, Portsmouth, Hampshire PO1 1DE  
Tel: +44 (0)23 9273 2113  
[www.portsmouthlanguagecollege.co.uk](http://www.portsmouthlanguagecollege.co.uk)  
Email: [info@portsmouthlanguagecollege.co.uk](mailto:info@portsmouthlanguagecollege.co.uk)



## Southampton LANGUAGE COLLEGE

1 Brunswick Place, Southampton, Hampshire SO15 2AN  
Tel: +44 (0)23 8023 1397  
[www.southamptonlanguagecollege.co.uk](http://www.southamptonlanguagecollege.co.uk)  
Email: [info@southamptonlanguagecollege.co.uk](mailto:info@southamptonlanguagecollege.co.uk)



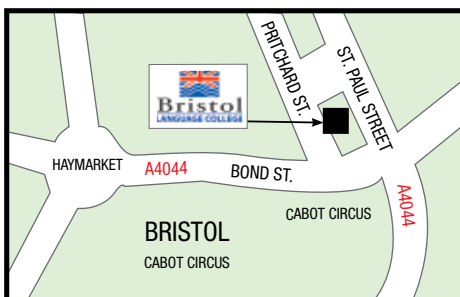
## Chichester LANGUAGE COLLEGE

61 North Street, Chichester, West Sussex PO19 1NB  
Tel: +44 (0)1243 536409  
[www.chichesterlanguagecollege.co.uk](http://www.chichesterlanguagecollege.co.uk)  
Email: [info@chichesterlanguagecollege.co.uk](mailto:info@chichesterlanguagecollege.co.uk)



## Winchester LANGUAGE COLLEGE

47 Southgate Street, Winchester, Hampshire SO23 9EH  
Tel: +44 (0)1962 863025  
[www.winchesterlanguagecollege.co.uk](http://www.winchesterlanguagecollege.co.uk)  
Email: [info@winchesterlanguagecollege.co.uk](mailto:info@winchesterlanguagecollege.co.uk)



## Bristol LANGUAGE COLLEGE

2 Portland Place, Pritchard Street, Bristol BS2 8RH  
Tel: +44 (0)117 924 5759  
[www.bristollanguagecollege.co.uk](http://www.bristollanguagecollege.co.uk)  
Email: [info@bristollanguagecollege.co.uk](mailto:info@bristollanguagecollege.co.uk)

For more information, please visit our websites, e-mail or contact us by phone.

**We look forward to welcoming you!**